

Protegra OF

Reverse osmosis systems 200 up to 1000 l/h



Pure water for larger applications

Industry, laboratories, medical and analytical facilities – all need pure water in various qualities and quantities. The Protegra Open Frame series (OF) produces pure water for a wide range of applications. It naturally deionises water in an environmentally friendly way using the principle of reverse osmosis.

The Protegra OF series is designed for large quantities of demineralised water. The desalination rate is at least 98 per cent and conductivity values of $< 20 \mu\text{S/cm}$ are achieved depending on the salt content of the input water.

These systems can be combined with other Evoqua accessories, such as different tank sizes, pressure boosting systems and a Modbus TCP gateway as a communication interface to a building management centre (BMS). This serves, for example, as the centrepiece of a central water treatment system in buildings with ring main operation.

Benefits

- Scope of supply includes consumables
- Compact service-friendly design, operable from all sides
- Applicable as central water treatment system
- Low maintenance
- Made in Germany

Typical applications

- Feed for laboratory ultrapure water systems
- General chemistry
- General industry
- Laboratory washing machines
- Water for autoclaves and environmental chambers
- Buffer preparation

Specifications

		Protegra OF 200	Protegra OF 500	Protegra OF 750	Protegra OF 1000
Flow rate	l/h	200	500	750	1000
Rejection rate min.	%	98	98	98	98
Recovery rate max.	%	75	75	75	75
Germ count reduction	%	> 99	> 99	> 99	> 99
Op. pressure max.	bar	14	14	14	14
Number of RO modules		1	3	4	5
Power supply	V/Hz	230 V/50/60 Hz	3 x 400/50	3 x 400/50	3 x 400/50
Power consumption	kW/h	0.55	1.33	1.8	2.2
Dimensions (H x W x D)	mm	1640 x 605 x 600	1640 x 605 x 600	1640 x 605 x 600	1640 x 605 x 600
Weight	kg	95	140	170	190
Catalog number		W3T269403	W3T314581	W3T314582	W3T314583

Systems < 1000 l/h on demand

Consumables

Cat. number	Description
W2T526933	Activated carbon/Fine filter cartridge ACB
W2T526551	Fine filter cartridge 5 µm Big Blue

Accessories

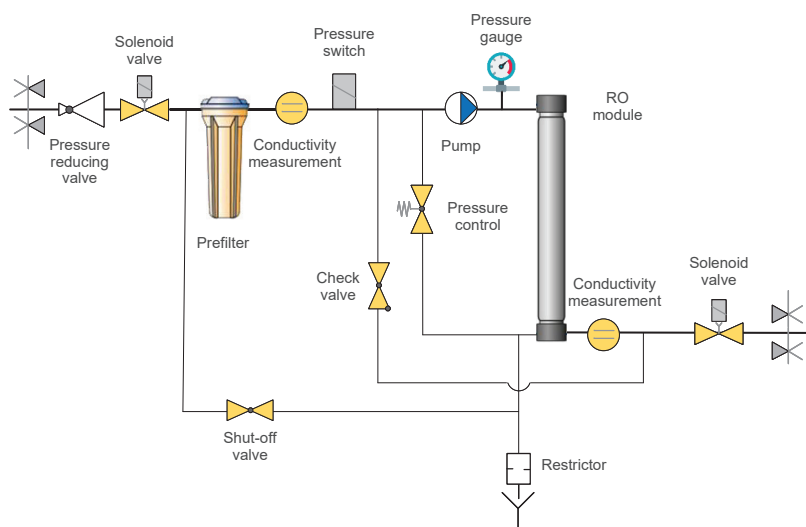
Cat. number	Description
W3T428768	Modbus TCP Gateway (LAB)
W3T262426	Degassing unit from 120 l/h on up to max. 5000 l/h

Testkits

Cat. number	Description
W2T870161	Testkit Carbon dioxide
W2T870160	Testkit Silica

Tanks

W3T197508	300 l, 650 x 1080 mm
W3T198133	500 l, 770 x 1230 mm
W3T198836	750 l, 720 x 720 x 1700 mm
W3T198753	1000 l, 780 x 780 x 1940 mm
W3T199591	1650 l, 2085 x 720 x 1400 mm
W3T199890	2000 l, 2180 x 720 x 1700 mm
W3T199834	3000 l, 2230 x 850 x 2200 mm



Evoqua Water Technologies GmbH
Fahrenheit 36
22885 Barsbüttel, Germany

Tel.: +49 08221 904-0
sales.lab.de@xylem.com
xylem.com/lab-water

All information presented herein is believed reliable and in accordance with accepted engineering practices. Evoqua makes no warranties as to the completeness of this information. Users are responsible for evaluating individual product suitability for specific applications. Evoqua assumes no liability whatsoever for any special, indirect or consequential damages arising from the sale, resale or misuse of its products.

© 2025 Xylem. All rights reserved.
Protegra OF 200 - 1000.EN.PS.0125

xylem
Let's Solve Water