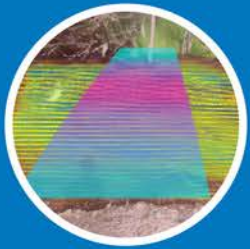
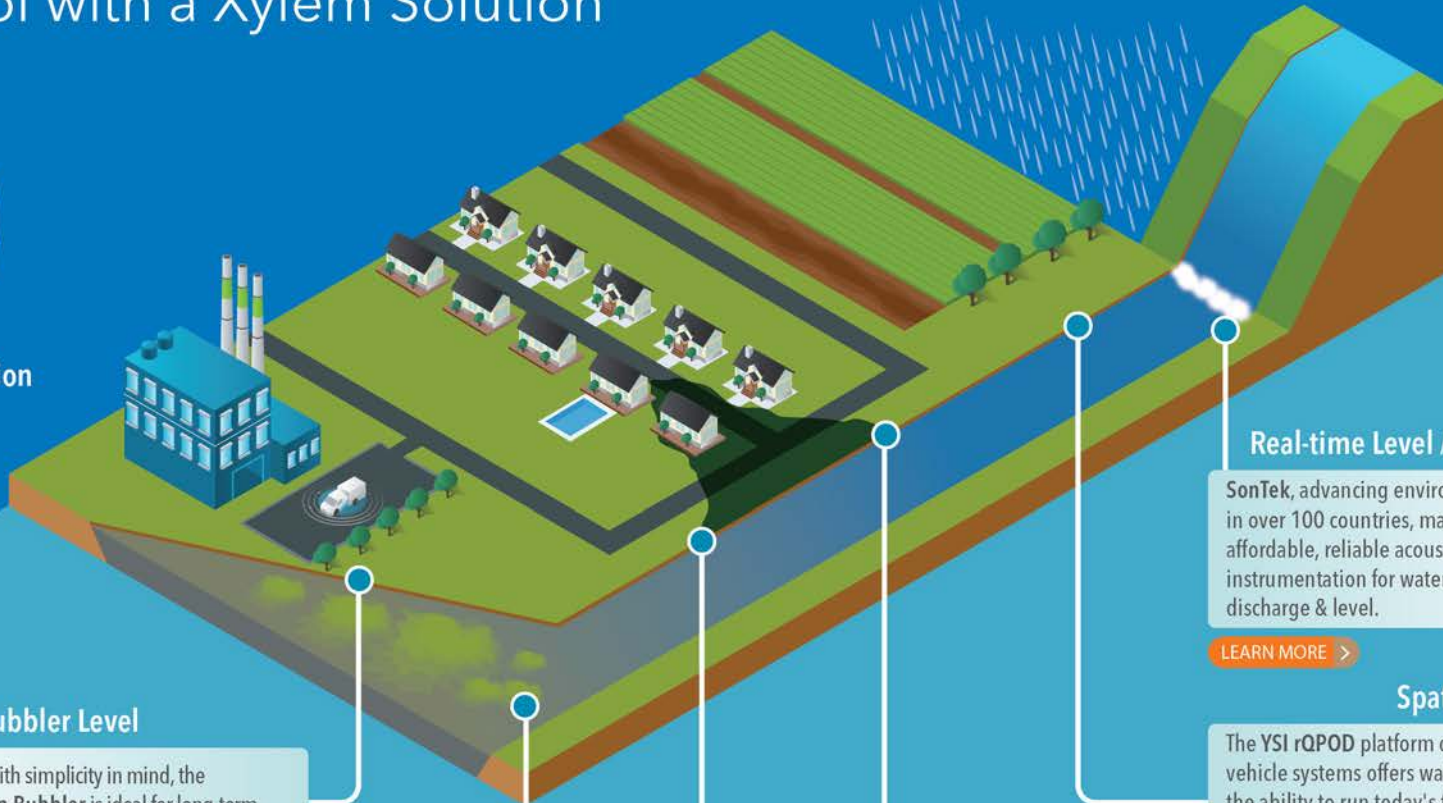


What Stormwater/Floodwater Monitoring Solution is Right for You?

Take control with a Xylem Solution



Camera - Computer Vision Stream Gauging (Coming soon)



Amazon Bubbler Level

Designed with simplicity in mind, the YSI Amazon Bubbler is ideal for long-term, highly accurate water level monitoring sites.

[LEARN MORE >](#)



Spot Monitoring

Single and Multiparameter water quality meters provide extreme flexibility for the measurement of a variety of parameter combinations.

[LEARN MORE >](#)

Autosampler

YSI's ProSample portable samplers provide highly accurate sampling in applications such as surface water, stormwater, and wastewater.

[LEARN MORE >](#)



Real-time Level / Flow / Discharge

SonTek, advancing environmental science in over 100 countries, manufactures affordable, reliable acoustic Doppler instrumentation for water velocity, discharge & level.



[LEARN MORE >](#)

Spatial Water Quality

The YSI rQPOD platform of remote surface vehicle systems offers water professionals the ability to run today's top sensors simultaneously for integrated, spatially, and temporally-aligned data sets.



[LEARN MORE >](#)

Real-time Catchment wide Water Quality Monitoring

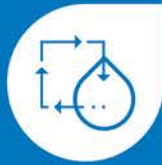
Following a legacy of cutting-edge technology, the YSI EXO Sonde Platform was designed to be the ultimate tool for monitoring the health of our oceans, estuaries, rivers, lakes, and groundwater.



[LEARN MORE >](#)

What Problems are Caused by Stormwater/Floodwater?

- Delivery of pollutants like motor oil, heavy metals, litter, and road salt from city streets,
- Habitat damage due to erosion of river banks and sedimentation as soils are delivered downstream,
- Delivery of nutrients and pesticides from agricultural regions, leading to eutrophication and destruction of wildlife and aquatic plants,
- Combined sewer overflows from urban areas that deliver both nutrients and potential pathogens
- Roadway flooding that threatens driver safety, especially during an evacuation,
- Damage to infrastructure like bridges due to recurring high-flow events.



Round-the-clock
visibility of water level
and flow throughout
a network



Detection of point
and non-point source
pollution, as well as pollutant
source-tracking



24/7 notifications
when water levels or
contaminants reach an
actionable level



Long-term
decisions intelligence
that leads to model-based
predictions



See Xylem's extensive range of
Storm and Surface Water
offerings here [LEARN MORE >](#)

info.em@xylem.com

www.xylem.com