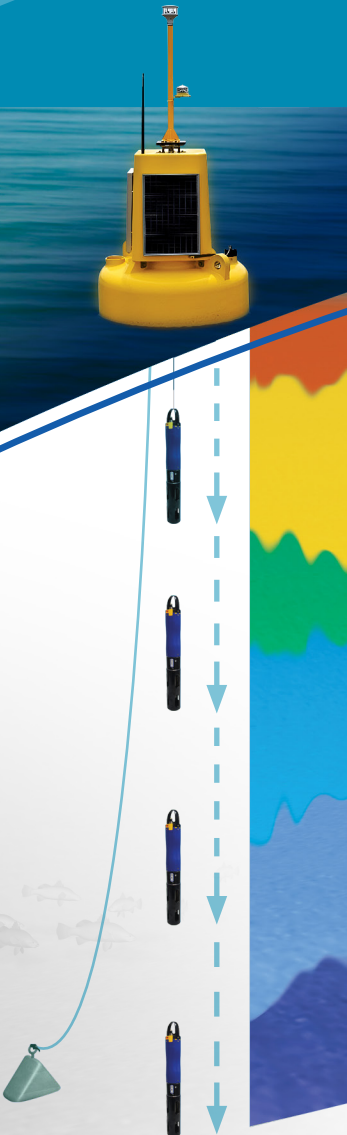




YSI Mini VPS

WATER QUALITY VERTICAL PROFILING SYSTEM



Profiling is the most cost-effective and accurate way to investigate the entire water column by collecting multiparameter data points at pre-programmed depths.

With YSI's automated profiling system, you'll never miss an event. 24/7 real-time monitoring saves time, money and the requirement for potentially high-risk event-based mobilisation.

The Vertical Profile System (VPS) has played a pivotal role in the decision-making process for the management of Algae Blooms, Turbidity Plumes and Dissolved Organic Matter concentrations in order to assist with pre-empting the water treatment process as well as understanding baseline seasonal fluctuations.

To complement the existing VPS fleet, Xylem has introduced the Mini (DB1300) VPS to the existing portfolio which includes the [Pontoon](#) and [Fixed](#) Profilers.

Features and Benefits

- Designed for plug & play using [YSI EXO](#) multi parameter water quality sonde.
- Safer operation - no divers required
- Autonomous profiling range 1-20m via robust automated mini winch.
- 24/7 unattended monitoring
- Secure modular design allows flexibility to add wide range of sensors with Real-time data access
- Easy deployment with simple mooring configuration



a xylem brand

YSI Mini VPS WATER QUALITY VERTICAL PROFILING SYSTEM

DB1300 Technical Data

Construction	Rotationally moulded in medium density UV stabilised low density polyethylene (LLDPE)
Buoy Filling	Polyurethane
Internal Structure	SS316
Diameter	1300mm
Air Weight	545kg
Nominal Draft	644mm
Draft Reduction per 100mm	74mm
Nominal Freeboard	479mm
Submergence	5.3kn
Focal Plane Height	1797mm
Visible Area	1.57m ²
Colours	IALA standard colours available
Maximum Mooring Load	950kg
Maximum Current	6 Knots
Moon Pools	1 central for profiling. Maximum 4 external Internal Winch Moon Pool 150mm

Mini Winch Specifications

Profiling Depth	1m to 20m
Profiler Cable Type	UV resistant Kevlar sheath
Power Supply	135W (3 x 45W Panels), 12VDC
Winch Drum Construction	Non-Corrosive Delrin
Other Features	Marine grade electronic slip ring Diamond screw assembly to prevent snagging

Monitoring Capability

Water Quality	Conductivity, Temperature, Salinity, pH, ORP, Dissolved Oxygen, Turbidity, Nitrate, Blue Green Algae, Chlorophyll, Ammonium, Chloride, Photosynthetically Active Radiation (PAR), Oil in Water
Other Parameters	Wind Speed, Wind Direction, Temperature, Relative Humidity, Barometric Pressure, Precipitation, Solar Radiation

