



# Xylem Nexicon™

MONITORING AND CONTROL POWERED WITH WATER EXPERTISE



## Introducing Xylem Nexicon™

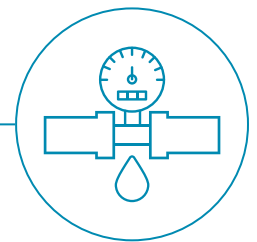
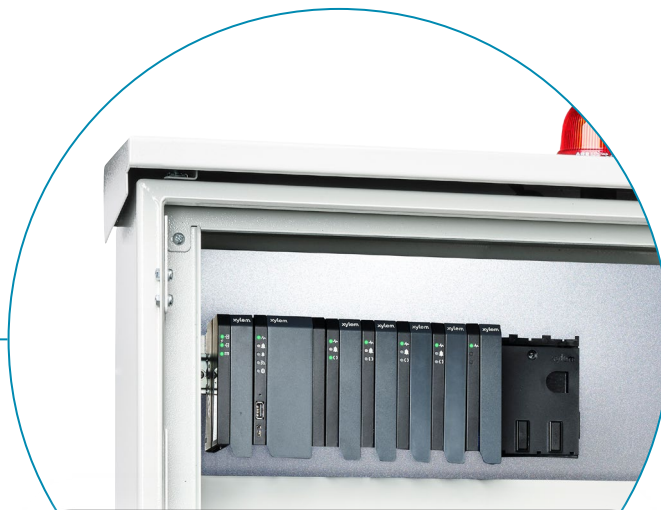
Your water and wastewater solution must meet specific and ever-evolving efficiency demands while delivering at optimal capacity. Xylem Nexicon™ is an innovative monitoring and control platform designed by world-class water experts to keep up with those demands and lower operational costs.

**Install it to your specifications, then easily adapt the integrated hardware and software as your needs change.**



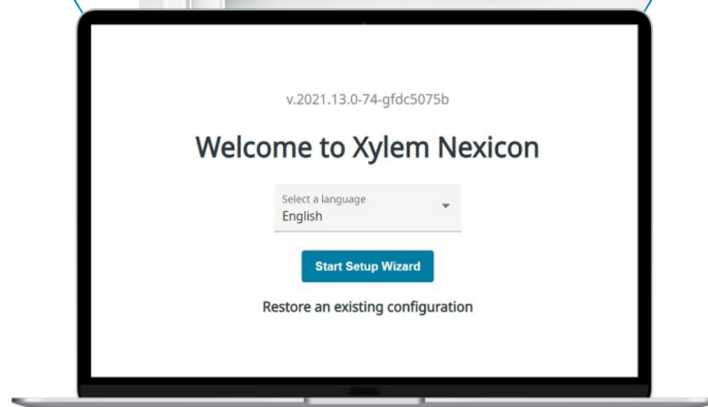
### CLOUD

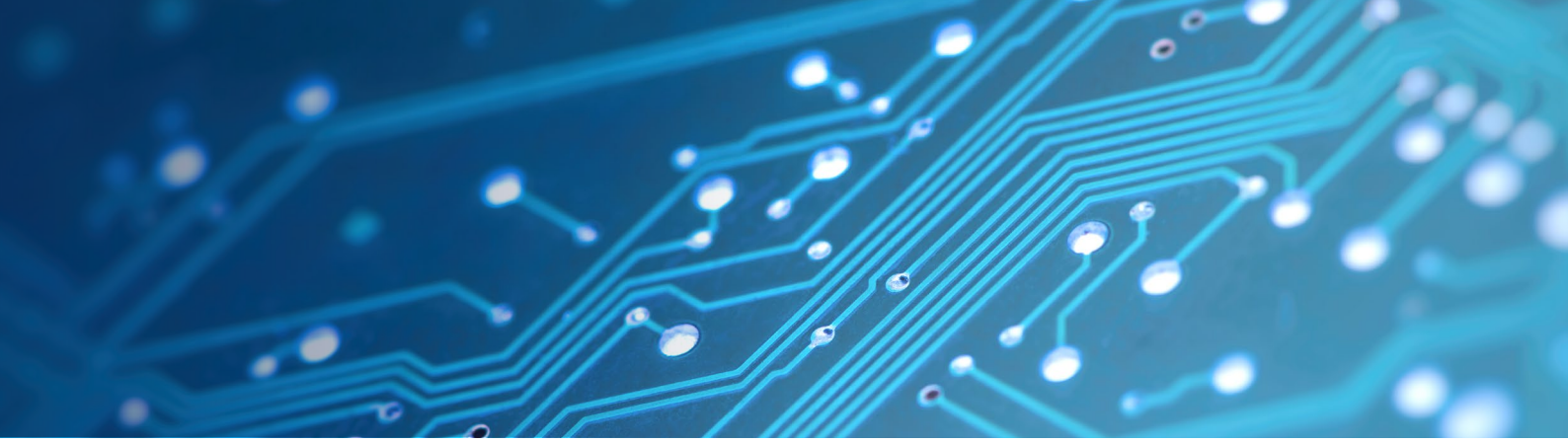
Data Storage  
Data Management  
Data Visualization  
Data Insights



### EQUIPMENT AND ASSETS

All water infrastructure equipment





## Lower your costs right from the start

---



Nexicon™ is built with **modules** preconfigured for your water applications by Xylem's experienced engineers. You save on installation, engineering, and pump operation right from the start. Mid- and long-term costs are also reduced with a system that offers **high performance and easier upkeep**.

- › Reduce your investment with a plug-and-play configuration that doesn't sacrifice functionality or customization.
- › Operate consistently with fewer clogged pumps and more uptime for all applications.
- › Prioritize maintenance and reduce services with built-in automated monitoring and reporting.
- › Manage system needs with predictive maintenance and automatic troubleshooting.

## Run on water software that anyone can operate

---



A **user-friendly interface** makes installation and operation accessible to anyone. Once connected, Nexicon™ will bring together multiple assets under a single streamlined system that operates, monitors, and adapts seamlessly.

- › Simplify your water system with automatic adjustments and easier maintenance.
- › Ensure performance with an integrated system that's tested end to end.
- › Automate interoperability between various devices and systems through multiprotocol communication.
- › Swift troubleshooting through the built-in intelligent and flexible alarm system.

## Configure and expand to your needs

---



The Nexicon™ solution includes **flexible hardware and updatable software** that let you build exactly the system you need. Then, you can easily **add modules and scale** your Nexicon™ system to adapt to more complex infrastructure. This is what we call **future-proofing your monitoring and control investment**.

- › Use Nexicon™ for all your water and wastewater applications thanks to the modular design—one system, different setups.
- › Get high-performance software and hardware with dedicated functionality for each application.
- › Adapt easily to evolving regulations using standard programming language.
- › Respond quickly to your operation's needs.

# Xylem |'zīləm|

- 1) The tissue in plants that brings water upward from the roots;
- 2) a leading global water technology company.

We're a global team unified in a common purpose: creating advanced technology solutions to the world's water challenges. Developing new technologies that will improve the way water is used, conserved, and re-used in the future is central to our work. Our products and services move, treat, analyze, monitor and return water to the environment, in public utility, industrial, residential and commercial building services settings. Xylem also provides a leading portfolio of smart metering, network technologies and advanced analytics solutions for water, electric and gas utilities. In more than 150 countries, we have strong, long-standing relationships with customers who know us for our powerful combination of leading product brands and applications expertise with a strong focus on developing comprehensive, sustainable solutions.

**For more information on how Xylem can help you, go to [www.xylem.com](http://www.xylem.com)**



Xylem  
[www.xylem.com](http://www.xylem.com)

Xylem Nexicon is a trademark of Xylem or one of its subsidiaries.  
© 2021 Xylem. All rights reserved.