

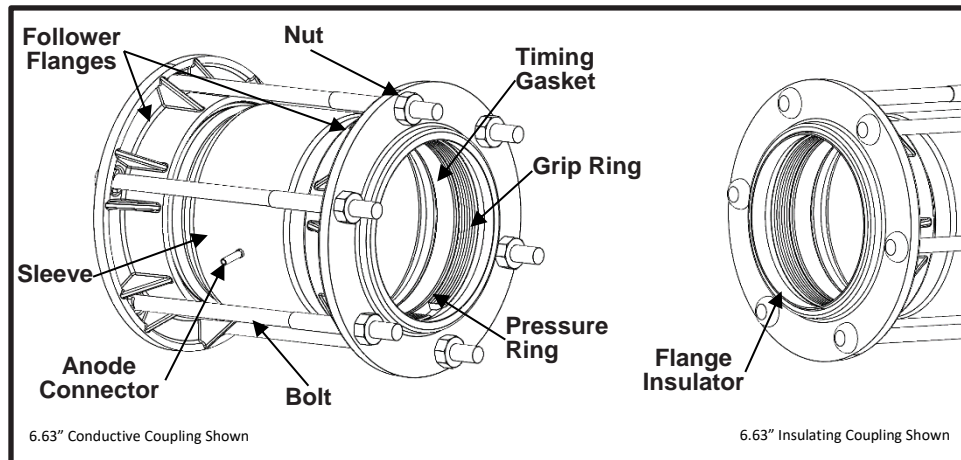


Smith-Blair
a xylem brand

SPECIFICATION

MAXI-GRIP® EZ

CLASS I RESTRAINT COUPLING



APPLICATIONS

- **Typical Uses**
 - Joining and restraining IPS x IPS plain end pipes of same outer diameters
 - For conductive and insulating applications
- **Standard Pipe Sizes**
 - 1-1/4" to 12" nominal
- **Type of Pipe**
 - Steel x Steel
 - Steel x PE
 - PE x PE
- **Pressure Rating**
 - Working Pressure: PE = 125 PSI
Steel = 300 PSI
 - Test Pressure = (Working Pressure) x 2

MATERIALS

- **Follower Flanges**
 - Material: 1-1/4" - 4" nominal pipe size(s) = ASTM A569 Grade 1008/1010 HR, Carbon Steel
6" - 12" nominal pipe size(s) = ASTM A536 Grade 65-45-12, Ductile Iron
 - Flexi-Coat® fusion bonded epoxy
- **Sleeve**
 - Material: 1-1/4" - 4" nominal pipe size(s) = ASTM A513 Grade 1008/1010 HREW, Carbon Steel
6" - 12" nominal pipe size(s) = ASTM A283 Grade C, Carbon Steel
 - Standard Length: 1-1/4" - 8" nominal pipe size(s) = 7"
10" - 12" nominal pipe size = 10"
 - Flexi-Coat® fusion bonded epoxy on outer diameter
- **Grip Rings**
 - Material: 2" - 8" nominal pipe size(s) = ASTM A513 DOM 1026, Carbon Steel
10" - 12" nominal pipe size(s) = ASTM A36, Carbon Steel
 - Case hardened teeth
 - Coated in red oxide primer



Smith-Blair
a xylem brand

SPECIFICATION

MAXI-GRIP® EZ

CLASS I RESTRAINT COUPLING

- **Pressure Rings**
 - ASTM A569 Grade 1008/1010 HR, Carbon Steel
 - Coated in red oxide primer
- **Wave Spring**
 - AISI C-1080 Spring Temper Steel
 - Used in lieu of Timing Skirt on 1-1/4" and 10" size(s)
- **Anode Connector**
 - 1" length, 1/4" tubular copper clad conductor for sacrificial anode or cathodic protection
 - Equipped with copper lead wire and brass clip for continuity
- **Timing Gaskets**
 - Material: Conductive = ASTM-D2000 SBR Rubber
Insulating = ASTM D2000 Natural Rubber
 - Resistant to Natural Gas, Natural Gas Odorants, Carbon Dioxide, Water, UV, Ozone, and other chemicals
 - Timing Skirt
- **Bolts**
 - High Strength Low Alloy (HSLA) Steel
 - 5/8"-11UNC, Track-head, barbed for continuity
 - Rolled threads
- **Nuts**
 - HSLA Steel
 - 5/8"-11UNC, X-Heavy Hex Semi-Finished
- **Flange Insulator**
 - Nylon Plastic

REGULATIONS

- Marked in accordance with DOT CFR49-192.63(a)(2)
- 1-1/4" through 12", 10" excluded, EZ Maxi-Grip couplings are manufactured, and have been tested, to Category 1 standards for use on PE Pipe in accordance with DOT CFR49-192.281(e) and ASTM F1948-19

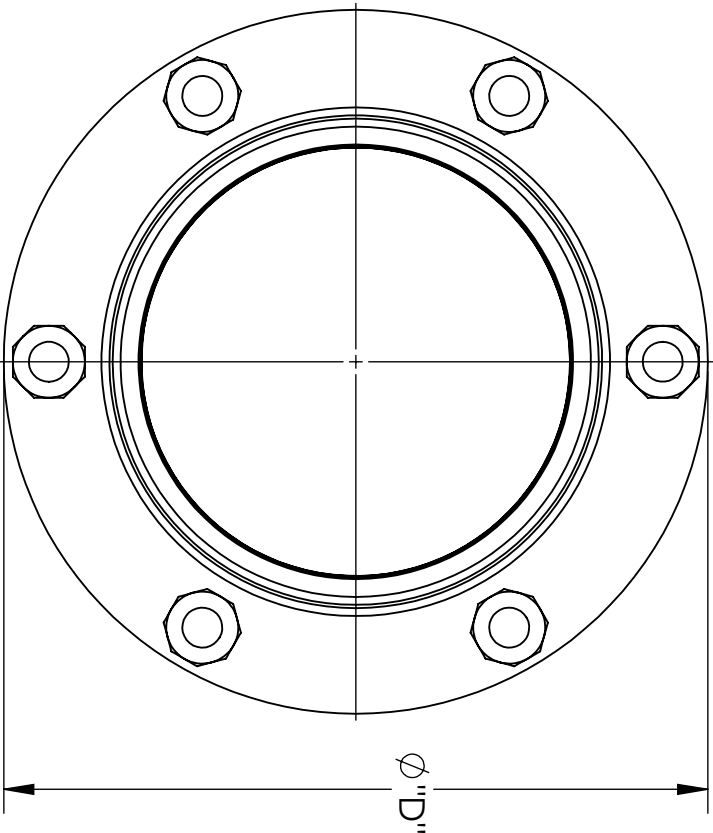
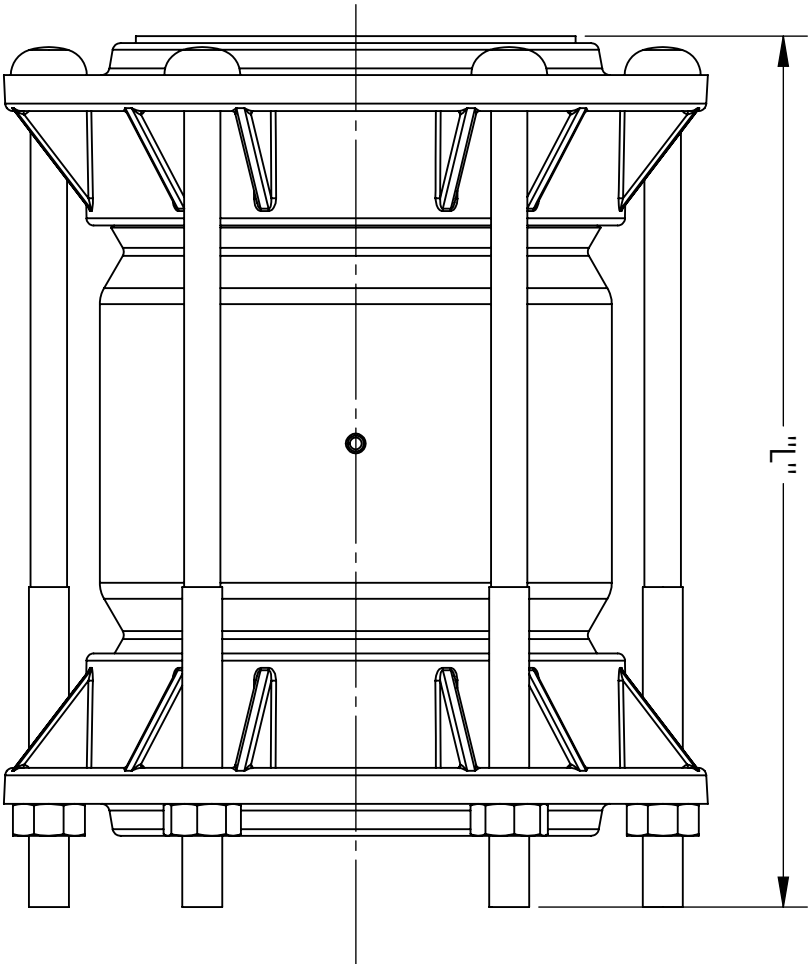
OPTIONS

- Stainless Steel hardware with fluoropolymer coated nuts

NOTES

- Pressure subject to limitation by the lower of the coupling rating and pipe rating(based on SDR for PE)
- Pipe end insulators and polypropylene boot also provided with insulating couplings
- Pipe stiffeners **required** when this product is used on MDPE or HDPE
- For IPS x IPS reducing applications, see Class II EZ specification
- For CIPS x IPS reducing applications, see Class III EZ specification
- Xylem, Smith-Blair, SB stylized, Flexi-Coat, and Maxi-Grip are registered trademarks of Xylem, Inc., or one of its subsidiaries
- These product specifications were correct at the time of publication and are subject to change without notice
- See the Smith-Blair website for part numbers and ordering information
- See the Smith-Blair website for warranty information
- See the Smith-Blair website for corrosion notice

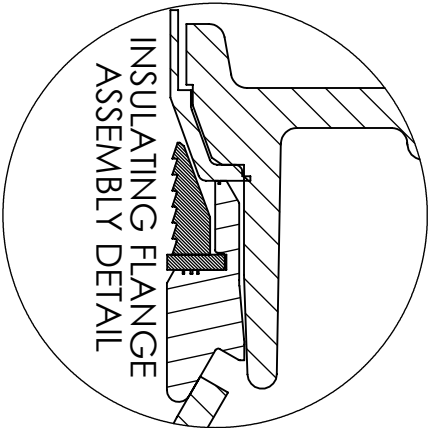
30 Globe Ave, Texarkana, AR 71854
Ph: 870-773-5127 • Fax: 870-773-5212
Toll-Free Numbers: Ph: 800-643-9705 • Fax: 800-648-6792



SEE CATALOG FOR ORDERING DETAILS

CLASS I IPS X IPS (CONDUCTIVE)				
PART NUMBER	PIPE SIZE	DIAMETER "D" (IN)	LENGTH "L" (IN)	BOLT QUANTITY
EZ1 8 A7UMG	1.66	4.42	9.50	3
EZ2 8 B7UMG	2.38	6.75	13.50	3
EZ3 8 B7UMG	3.50	7.75	13.50	4
EZ4 8 B7UMG	4.50	8.50	13.50	4
EZ6 8 D7UMG	6.63	11.00	13.50	6
EZ8 8 B7UMG	8.63	13.25	13.50	8
EZ10 8 A10UMG	10.75	16.50	15.50	12
EZ120 8 D10UMG	12.75	18.00	15.50	16

CLASS I IPS X IPS (INSULATING)				
PART NUMBER	PIPE SIZE	DIAMETER "D" (IN)	LENGTH "L" (IN)	BOLT QUANTITY
EZ2 9 B7UMG	2.38	6.75	13.50	3
EZ3 9 B7UMG	3.50	7.75	13.50	4
EZ4 9 B7UMG	4.50	8.50	13.50	4
EZ6 9 B7UMG	6.63	11.75	13.50	6
EZ8 9 B7UMG	8.63	13.25	13.50	8



TOLERANCES U.N.O.		NOTES:		APP'D	DATE
XX= ±.03		REMOVE BURRS		CK'D	DATE
XXX= ±.015		AND SHARP EDGES			
FRACTIONS=		DO NOT SCALE DWG.			
ANGLES=±1°					
MACH. FIN=					
ALL DIMENSIONS ARE IN INCHES.		SCALE:	N/A	DRN	SPW
					DATE
					7/14/15
TITLE					
SPECIFICATION					
MAXI-GRIP® EZ™					
CLASS I RESTRAINT COUPLING					
SMITH-BLAIR, Inc.				P/N	
TEXARKANA, ARKANSAS				VARIOUS	
SPEC_EZ1.DRW				3 OF 3	
DWG. NO.				5/19/21	
				REV.	