

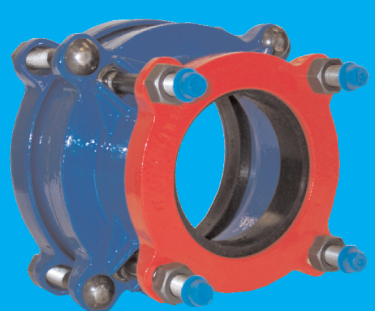
OMNI™ Coupling System



Nominal Pipe Size (Inches)	Range† (Inches)	Gasket/Follower Color Code	Gasket	Follower Flange	Fits Pipes of These Nominal O.D.'s (Inches)													
					Copper Tube Size (CTS)	O.D. Steel	Schd. 40/80 Steel and IPS PVC	AWWA Ductile Iron & C900 PVC	AWWA Pit Cast Iron	Asbestos Cement Pipe								
										Class 100		Class 150		Class 200				
ME	RB	ME	RB	ME	RB													
2	2.34 - 2.63	Blue	33827	20975			2.38	2.50										
2 1/2	2.65 - 2.88	Red	33828	21366			2.88											
3	2.85 - 3.13	Red	34610	21368	3.13													
	3.44 - 3.62	Red	33829	21368			3.50											
	3.80 - 3.96	Blue	33830	21369				3.96	3.80*		3.95	3.84		3.84				
	3.97 - 4.14	Blue	33831	21369									4.13					
4	4.00 - 4.15	Red	33809	22392	4.13	4.00												
	4.22 - 4.50	Red	33810	22392			4.50											
	4.46 - 4.86	Red	34578	22392			4.50	4.80										
	4.80 - 5.10	Blue	33811	21353				4.80	5.00		5.05	4.81	5.07	4.81				
	5.11 - 5.45	Blue	33812	21353							5.25		5.32				5.33	
6	6.00 - 6.15	Red	33801	22393	6.13	6.00												
	6.28 - 6.63	Red	33802	22393			6.63											
	6.56 - 6.96	Red	34579	22393			6.63	6.90										
	6.90 - 7.22	Blue	33803	21348				6.90	7.10	6.91	7.19	6.91	7.20	6.91				
	7.25 - 7.65	Grey	33804	21349							7.40		7.37				7.60	
8	8.00 - 8.16	Red	33805	22394		8.00												
	8.40 - 8.63	Red	33806	22394			8.63											
	8.54 - 9.11	Red	34580	22394			8.63	9.05										
	9.05 - 9.45	Blue	33846	21350				9.05		9.11	9.39	9.11	9.40	9.11	9.44			
	9.05 - 9.30	Blue	33807	21350					9.30									
	9.46 - 9.85	Grey	33808	21351							9.57		9.62				9.79	
10	10.00	Red	33860	21355		10.00												
	10.50 - 10.75	Red	33813	21355			10.75											
	11.10 - 11.60	Blue	33814	21356				11.10	11.40	11.24	11.47							
	11.65 - 11.88	Grey	33815	21357							11.77	11.66	11.88	11.66	11.88			
	11.90 - 12.20	Grey	33816	21357									12.12				12.12	
12	12.00	Red	33859	21359		12.00												
	12.50 - 12.75	Red	33817	21359			12.75											
	13.20 - 13.50	Blue	33820	21360				13.20	13.50	13.44								
	13.51 - 13.75	Blue	33821	21360							13.74							
	13.90 - 14.20	Grey	33818	21361		14.00	14.00				14.04	13.92	14.20	13.92	14.20			
	14.21 - 14.40	Grey	33819	21361									14.38				14.38	
14	15.30 - 15.50	Blue	33822	21363				15.30			15.50							
	15.55 - 15.80	Blue	33823	21363						15.65	15.80							
	16.22 - 16.35	Grey	33835	21364								16.22		16.22				
	16.41 - 16.55	Grey	33824	21364									16.50		16.55			
	16.73 - 16.90	Grey	33825	21364									16.73		16.88			
16	17.40 - 17.80	Blue	33832	21371				17.40	17.80		17.65							
	18.46 - 18.90	Grey	33833	21372								18.46	18.75	18.46	18.84			
	18.90 - 19.20	Grey	33834	21372									18.97		19.19			

† Published ranges indicate nominal pipe outside diameters. Couplings are designed for pipes within current AWWA standard tolerances.
* Class A is 3.80. Classes B, C and D are 3.96.

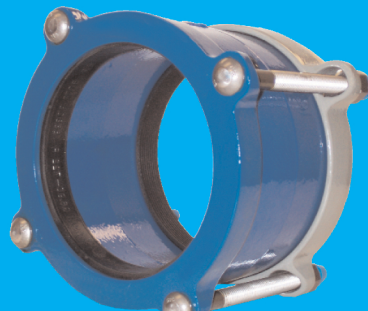
To order these and other Smith-Blair products, contact your local Smith-Blair distributor.



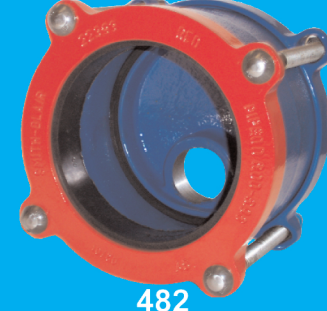
R-441
Reduction Coupling



441/442*
Straight Coupling



441/442*
Transition Coupling



482
End Cap Coupling

*441 is standard length 442 is long length

Smith-Blair, Inc.

Ph.: (870) 773-5127 • (800) 643-9705

Fax: (870) 773-5212 • (800) 648-6792

www.smith-blair.com

Distributor: