



Tapping Sleeve

Stainless Steel body, Carbon Steel Flange

664

IMPORTANT LINKS

Click appropriate words to go to:

[Standard Limited Warranty](#)
[Sales Terms & Conditions](#)
[Freight Policy](#)
[Returns Policy](#)
[Corrosion & Product Selection Notice](#)



Description: Stainless Steel tapping sleeve with epoxy-coated Carbon Steel flange and removable bolts.

Application: For tapping reducing and size-on-size flanged outlets

Key Features:

- Easy to install
- Range helps reduce inventory
- Meets applicable AWWA C223 Standards
- Molded-in ring in the gasket to ensure effective sealing
- Nylon washers to improve bolt torque capability
- Heavy gauge, all-Stainless Steel body for rugged performance
- Fully chemically passivated for maximum corrosion protection
- 3/4" test outlet to allow hydrostatic pressure test before tapping the pipe
- 360° seal provides maximum support and reinforcement around the pipe in case of pipe break
- Body drawn out to accept the outlet neck adding to the overall strength of the area under the most stress

Materials Specifications (subject to change):

BODY: Full circumference band. 18-8 type 304 Stainless Steel

FLANGES: AWWA C207 Class D, ANSI 150# drilling. Recessed for Tapping Valve per MSS-SP 60. Fusion-Bonded, Flexi-Coat® epoxy coated Carbon Steel

Optional: Other types of Flanges, threaded outlets, MJ Outlets

GASKET: Nitrile (Buna-N) NSF-61 compounded to resist water, oil, acids, alkalies, most (aliphatic) hydrocarbon fluids and many chemicals

Temperature Range: up to +180°F

BOLTS, NUTS & WASHERS: 18-8 Type 304 Stainless Steel heavy hex nuts, bolts & washers. Nuts and studs are coated to prevent galling

Working Pressure: Up to 175 PSI

Pipe Applications: Steel, Cast Iron, Asbestos Cement, PVC and other. For other pipe materials, please contact Smith-Blair Engineering.

Sizes (in inches): Call Smith-Blair for more information on styles, sizes and pricing.

664-665

Tapping Sleeve

Carbon Flange and Stainless Steel

Tapping Sleeve Specifications

OUTLET SIZE	NOMINAL BODY SIZE	A (IN)	B (IN)	C (IN)	D (IN)	E (IN)	F (IN)
4	4	15	5	5 1/16	4 1/4	8	5/8
	6-18	15	5	5 1/16	4 1/4	8	5/8
	20-24	20	5	5 1/16	4 1/4	8	5/8
6	6	15	5	7 1/16	6 5/16	8	5/8
	8-18	15	5	7 1/16	6 5/16	8	5/8
	20-24	20	5	7 1/16	6 5/16	10	5/8
8	8	20	5	9 1/16	8 5/16	10	5/8
	10-18	20	5	9 1/16	8 5/16	10	5/8
	20-24	25	5	9 1/16	8 5/16	14	5/8
10	10	25	5	11 3/32	10 1/4	14	5/8
	20-24	25	5	11 3/32	10 3/8	14	5/8
12	12	25	5	13 3/32	12 1/4	14	5/8
	14-24	25	5	13 3/32	10 3/8	14	5/8

For MJ outlets, replace the last two 00s in the middle eight digits with MJ. Example: 664-127504MJ-000.

NOMINAL SIZE OF PIPE x FLANGED OUTLET	OD RANGE (INCHES)	664 FLEXI-COAT® EPOXY COATED CARBON STEEL FLANGE	665 STAINLESS STEEL FLANGE	APPROX. WEIGHT EACH POUNDS
		CATALOG NUMBER	CATALOG NUMBER	
4 x 4	4.50-4.80	664-04800400-200	665-04800400-200	34
4 x 4	4.80-5.10	664-05000400-200	665-05000400-200	42
6 x 4	6.59-6.99	664-06630400-000	665-06630400-000	55
6 x 6		664-06630600-200	665-06630600-200	61
6 x 4	6.84-7.30	664-06900400-000	665-06900400-000	55
6 x 6		664-06900600-200	665-06900600-200	61
6 x 4	7.10-7.50	664-07200400-000	665-07200400-000	55
6 x 6		664-07200600-200	665-07200600-200	61
6 x 4	7.40-7.80	664-07450400-000	665-07450400-000	55
6 x 6		664-07450600-200	665-07450600-200	61
8 x 4	7.90-8.30	664-08000400-000	665-08000400-000	64
8 x 6		664-08000600-000	665-08000600-000	72
8 x 4	8.62-9.06	664-08630400-000	665-08630400-000	64
8 x 6		664-08630600-000	665-08630600-000	72
8 x 8		664-08630800-200	665-08630800-200	93
8 x 4	8.99-9.45	664-09050400-000	665-09050400-000	64
8 x 6		664-09050600-000	665-09050600-000	72
8 x 8		664-09050800-200	665-09050800-200	93

For MJ outlets, replace the last two 00s in the middle eight digits with MJ. Example: 664-127504MJ-000.

NOMINAL SIZE OF PIPE x FLANGED OUTLET	OD RANGE (INCHES)	664 FLEXI-COAT® EPOXY COATED CARBON STEEL FLANGE	665 STAINLESS STEEL FLANGE	APPROX. WEIGHT EACH POUNDS
		CATALOG NUMBER	CATALOG NUMBER	
8 x 4	9.20-9.60	664-09450400-000	665-09450400-000	64
8 x 6		664-09450600-000	665-09450600-000	72
8 x 8		664-09450800-200	665-09450800-200	93
8 x 4	9.60-10.00	664-09650400-000	665-09650400-000	64
8 x 6		664-09650600-000	665-09650600-000	72
8 x 8		664-09650800-200	665-09650800-200	93
10 x 4	9.90-10.30	664-10000400-000	665-10000400-000	61
10 x 6		664-10000600-000	665-10000600-000	65
10 x 8		664-10000800-000	665-10000800-000	88
10 x 4	10.73-11.13	664-10750400-000	665-10750400-000	61
10 x 6		664-10750600-000	665-10750600-000	65
10 x 8		664-10750800-000	665-10750800-000	88
10 x 10		664-10751000-200	665-10751000-200	95
10 x 4	11.05-11.45	664-11100400-000	665-11100400-000	61
10 x 6		664-11100600-000	665-11100600-000	65
10 x 8		664-11100800-000	665-11100800-000	88
10 x 10		664-11101000-200	665-11101000-200	95
10 x 4	11.70-12.10	664-11750400-000	665-11750400-000	61
10 x 6		664-11750600-000	665-11750600-000	65
10 x 8		664-11750800-000	665-11750800-000	88
10 x 10		664-11751000-200	665-11751000-200	95
10 x 4	12.00-12.40	664-12000400-000	665-12000400-000	61
10 x 6		664-12000600-000	665-12000600-000	65
10 x 8		664-12000800-000	665-12000800-000	88
10 x 10		664-12001000-200	665-12001000-200	95
12 x 4	12.50-12.90	664-12750400-000	665-12750400-000	65
12 x 6		664-12750600-000	665-12750600-000	69
12 x 8		664-12750800-000	665-12750800-000	95
12 x 10		664-12751000-000	665-12751000-000	101
12 x 12		664-12751200-200	665-12751200-200	138
12 x 4	13.16-13.56	664-13200400-000	665-13200400-000	65
12 x 6		664-13200600-000	665-13200600-000	69
12 x 8		664-13200800-000	665-13200800-000	95
12 x 10		664-13201000-000	665-13201000-000	101
12 x 12		664-13201200-200	665-13201200-200	138
12 x 4	13.60-14.09	664-13820400-000	665-13820400-000	63
12 x 6		664-13820600-000	665-13820600-000	67
12 x 8		664-13820800-000	665-13820800-000	90
12 x 10		664-13821000-000	665-13821000-000	113
12 x 12		664-13821200-200	665-13821200-200	128

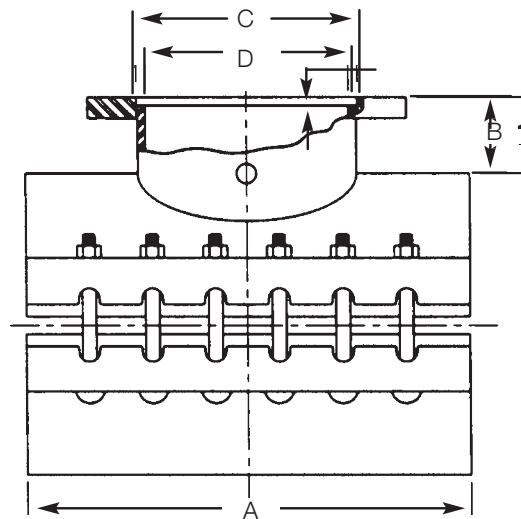
For MJ outlets, replace the last two 00s in the middle eight digits with MJ. Example: 664-127504MJ-000.

NOMINAL SIZE OF PIPE x FLANGED OUTLET	OD RANGE (INCHES)	664 FLEXI-COAT® EPOXY COATED CARBON STEEL FLANGE	665 STAINLESS STEEL FLANGE	APPROX. WEIGHT EACH POUNDS
		CATALOG NUMBER	CATALOG NUMBER	
12 x 4	14.10-14.58	664-14250400-000	665-14250400-000	64
12 x 6		664-14250600-000	665-14250600-000	68
12 x 8		664-14250800-000	665-14250800-000	91
12 x 10		664-14251000-000	665-14251000-000	115
12 x 12		664-14251200-200	665-14251200-200	130
14 x 4	15.30-15.80	664-15300400-000	665-15300400-000	63
14 x 6		664-15300600-000	665-15300600-000	67
14 x 8		664-15300800-000	665-15300800-000	90
14 x 10		664-15301000-000	665-15301000-000	113
14 x 12		664-15301200-000	665-15301200-000	128
14 x 4	15.80-16.30	664-16000400-000	665-16000400-000	64
14 x 6		664-16000600-000	665-16000600-000	68
14 x 8		664-16000800-000	665-16000800-000	91
14 x 10		664-16001000-000	665-16001000-000	115
14 x 12		664-16001200-000	665-16001200-000	130
14 x 4	16.40-16.80	664-16400400-000	665-16400400-000	70
14 x 6		664-16400600-000	665-16400600-000	73
14 x 8		664-16400800-000	665-16400800-000	98
14 x 10		664-16401000-000	665-16401000-000	123
14 x 12		664-16401200-000	665-16401200-000	132
16 x 4	17.40-17.80	664-17400400-000	665-17400400-000	68
16 x 6		664-17400600-000	665-17400600-000	71
16 x 8		664-17400800-000	665-17400800-000	95
16 x 10		664-17401000-000	665-17401000-000	120
16 x 12		664-17401200-000	665-17401200-000	135
16-18 x 4	18.60-19.20	664-18700400-000	665-18700400-000	70
16-18 x 6		664-18700600-000	665-18700600-000	73
16-18 x 8		664-18700800-000	665-18700800-000	98
16-18 x 10		664-18701000-000	665-18701000-000	123
16-18 x 12		664-18701200-000	665-18701200-000	138
18-20 x 4	19.50-20.10	664-19500400-000	665-19500400-000	93
18-20 x 6		664-19500600-000	665-19500600-000	96
18-20 x 8		664-19500800-000	665-19500800-000	125
18-20 x 10		664-19501000-000	665-19501000-000	134
18-20 x 12		664-19501200-000	665-19501200-000	148
18-20 x 4	20.90-21.59	664-20900400-000	665-20900400-000	94
18-20 x 6		664-20900600-000	665-20900600-000	98
18-20 x 8		664-20900800-000	665-20900800-000	127
18-20 x 10		664-20901000-000	665-20901000-000	136
18-20 x 12		664-20901200-000	665-20901200-000	150

For MJ outlets, replace the last two 00s in the middle eight digits with MJ. Example: 664-127504MJ-000.

NOMINAL SIZE OF PIPE x FLANGED OUTLET	OD RANGE (INCHES)	664 FLEXI-COAT® EPOXY COATED CARBON STEEL FLANGE	665 STAINLESS STEEL FLANGE	APPROX. WEIGHT EACH POUNDS
		CATALOG NUMBER	CATALOG NUMBER	
20 x 4	21.60-22.40	664-21600400-000	665-21600400-000	94
20 x 6		664-21600600-000	665-21600600-000	98
20 x 8		664-21600800-000	665-21600800-000	127
20 x 10		664-21601000-000	665-21601000-000	136
20 x 12		664-21601200-000	665-21601200-000	150
20-24 x 4	23.50-24.20	664-23500400-000	665-23500400-000	99
20-24 x 6		664-23500600-000	665-23500600-000	102
20-24 x 8		664-23500800-000	665-23500800-000	133
20-24 x 10		664-23501000-000	665-23501000-000	142
20-24 x 12		664-23501200-000	665-23501200-000	156
24 x 4	25.80-26.60	664-25800400-000	665-25800400-000	105
24 x 6		664-25800600-000	665-25800600-000	108
24 x 8		664-25800800-000	665-25800800-000	140
24 x 10		664-25801000-000	665-25801000-000	149
24 x 12		664-25801200-000	665-25801200-000	164
24 x 4	28.30-29.00	664-28300400-000	665-28300400-000	111
24 x 6		664-28300600-000	665-28300600-000	114
24 x 8		664-28300800-000	665-28300800-000	148
24 x 10		664-28301000-000	665-28301000-000	157
24 x 12		664-28301200-000	665-28301200-000	171

For MJ outlets, replace the last two 00s in the middle eight digits with MJ. Example: 664-127504MJ-000.



(E) Qty. of Bolts

(F) Size of Bolts