



Tapping Sleeve

Reinforced Concrete Pipe

625

IMPORTANT LINKS

Click appropriate words to go to:

[Standard Limited Warranty](#)
[Sales Terms & Conditions](#)
[Freight Policy](#)
[Returns Policy](#)
[Corrosion & Product Selection Notice](#)



Description: Tapping sleeve, Carbon Steel.

Application: For reducing size-on-size flanged outlets 4" and up on Concrete Cylinder pipe. Mechanical joint outlets are available.

Key Features:

- Designed specifically for lined and coated pre-stressed and non pre-stressed concrete cylinder pipe
- No welding required
- Stripping of the concrete finish is eliminated except in the area of the outlet
- The body of the sleeve is mounted on the pipe before the reinforcing wires are removed from the Steel Cylinder and the outlet neck inserted after the reinforcing wires are removed
- The sleeves' concave wedge gasket seals efficiently
- A series of studs compresses the adjustable outlet against the Steel cylinder

Materials Specifications (subject to change):

BODY: ASTM A283 Grade C Carbon Steel

FLANGES: AWWA C207 Class D, ANSI 150# drilling

GASKET: Nitrile (Buna N) NSF-61 listed. Concave wedge gasket, compounded to resist water, oil, acids, alkalis, most (aliphatic) hydrocarbon fluids, and other chemicals. Temperatures up to 180°F

STRAPS: Carbon Steel ASTM A36. *Type 304 Stainless Steel Optional*

BOLTS & NUTS: High strength, low alloy Steel with heavy semi-finished hexagon nuts to AWWA C111 (ANSI A21. 11) standards. *Optional Type 304 Stainless Steel bolts and nuts are coated to prevent galling*

SEAL PLATE: Carbon Steel ASTM 283 Grade C C/A36 ASTM A36

GROUT PIPES: Carbon Steel ASTM A53 Grade B

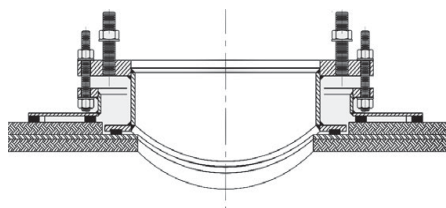
GROUT SEAL: One inch Square Foam Rubber

FINISH: Flexi-Coat® Fusion-Bonded Epoxy Finish

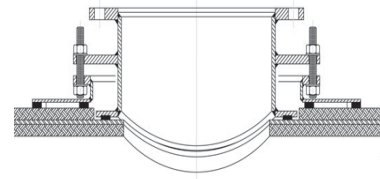
Working Pressure: Up to 150 PSI

Pipe Applications: Reinforced Concrete Pipe

Sizes (in inches): Please contact Smith-Blair for styles, sizes and pricing.



Optional 2 Flange Design



Optional 3 Flange Design