

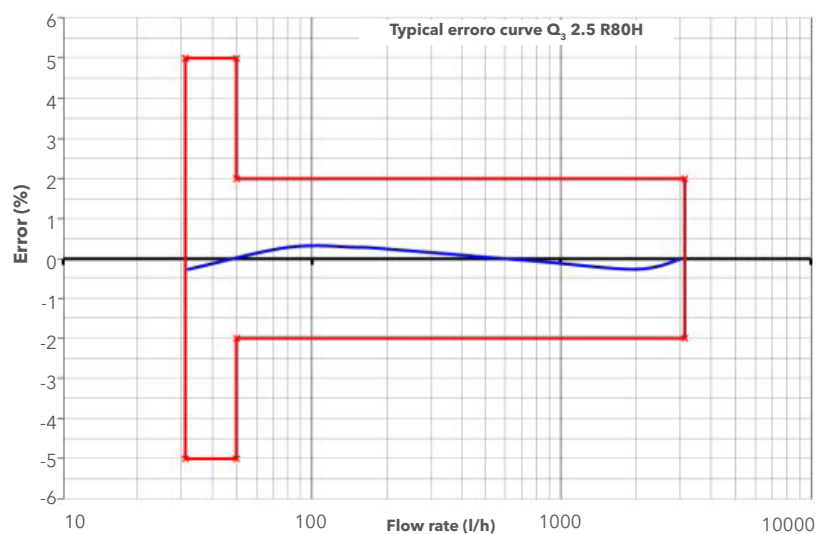
## DomoMUK®

### Multi-Jet Dry Meter Measuring Capsules



Our wide multi-jet dry meter measuring capsule portfolio covers all standard in-wall housings. They can be integrated into AMR systems via additional reading modules without a problem.

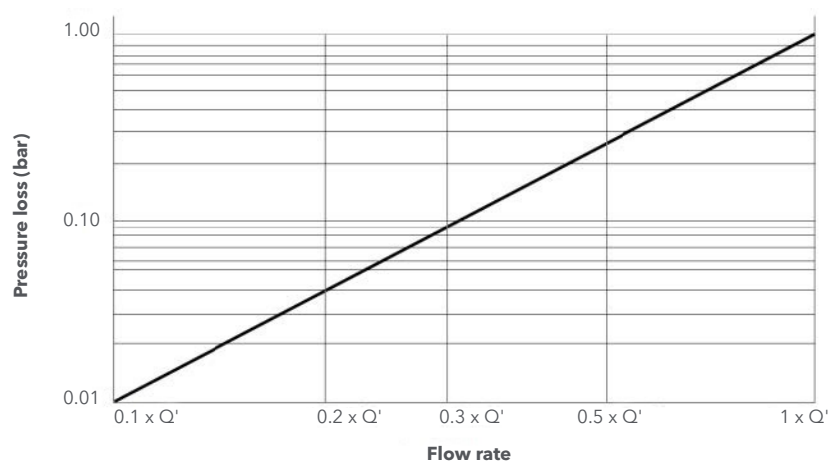
#### Typical Error Curve



#### FEATURES

- Ready for integration into any AMR system
- Temperature range up to 50 °C (cold) and up to 90 °C (warm)
- Nominal flow  $Q_3$  2,5
- Suitable for all standard in-wall housings
- MID measurement accuracy class ( $Q_3/Q_1$ ) up to R80 horizontal and up to R40 vertical
- 360° rotatable 8-digit totalizer
- Maximum pressure load 1,6 MPa
- Existing original rosettes can be used (Exception: Minol MB2-, MB3- and TE1-rosettes)
- Accessories (e.g. rosettes) are available separately
- Protection class IP64

#### Typical Pressure Loss Curve



# DomoMUK®

## Multi-Jet Dry Meter Measuring Capsules

### Remote Reading Options AMR - (Automatic Meter Reading)

**Pulse module**, S0 DIN 43864  
alternatively with 1 or 10 litres per pulse

**M-Bus module** according to EN 1434-3

**Radio module**, frequency range 433 MHz or 868 MHz (OMS)



Pulse module  
Domo P



M-Bus module  
Domo M



Radio module  
Domo R

### Retrofitting with Radio module

- Uni- or bidirectional transmission procedure
- Individually parameterizable
- Data recording via walk-by / drive-by
- Consumption data permanently stored
- Battery lifetime of up to 12 years
- Detection of rotation direction
- Manipulation detection



### Maximum convenience through AMR walk-by / drive-by solution

- Recording and storage of consumption data inside the radio module
- Reading of stored data via mobile reading device

# DomoMUK®

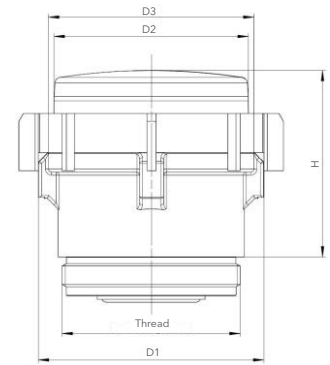
## Multi-Jet Dry Meter Measuring Capsules

### Technical Data

#### Type

DomoMUK®: Cold water from +0.1 °C up to +50 °C  
Warm water from +0.1 °C up to +90 °C

Example Model IST



Compatible to	Type*	Height H in mm (ca.)	D1 in mm	D2 in mm	D3 in mm	Nominal flow $Q_3$ in m³/h	Thread	Starting flow** in l/h	Flow rate $Q'$ at 1 bar pressure loss in l/h (ca.)	Weight in kg (ca.)
Allmess UP6000	A34	60	75	65	71	2.5	M77x1.5	10	3700	0.5
Deltamess TRK	DM1	55	75	65	71	2.5	M60x2	10	3300	0,4
Metrona 307/1	HT2	51	75	65	71	2.5	M66x1	10	3300	0.4
ISTA EAS-N	IST	62	75	65	71	2.5	G 2"	10	3300	0.4
Minol MB2	MB2	44	-	65	71	2.5	73.8mm	10	2800	0.5
Minol MB3	MB3	60	75	65	71	2.5	M76x1.5	10	3500	0.5
Brunata HT3	MET	35	75	65	71	2.5	M64x2	10	3300	0.2
Elster/ABB MO-C/EAS-N	MOC	35	75	65	71	2.5	M65x2	10	3500	0.2
Elster/ABB MO-E/EAS-H	MOE	35	75	65	71	2.5	M65x2	10	3600	0.2
SPX/Spanner Pollux PolluMUK	MUK	35	75	65	71	2.5	G 2 ¼"	10	3600	0.3
WEHRLE Unterputz	WE1	60	75	65	71	2.5	M78x1.5	10	3600	0.5
Wasser-Geräte WGU	WGU	52	75	65	71	2.5	M66x1.25	10	3700	0.4
Techem UP TE1	TE1	65	75	65	71	2.5	M62x2	10	3400	0.1

\* Additional lengths available on request

\*\* Typical values in horizontal installation position

The meter does not require any upstream or downstream straight length (U0/D0).

# DomoMUK®

## Multi-Jet Dry Meter Measuring Capsules

### EU Type Approval

EU Type Examination Certificate **DE-20-MI001-PTB001**  
and **CH-MI001-07009** acc. to

- 2014/32/EU (MID)
  - OIML R49
  - EN 14154-4
  - ISO 4064

### Test Certificate / Certificates (UBA, TVO)

(Materials in contact with drinking water)

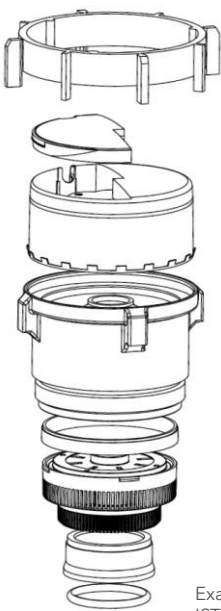
- KTW/DVGW
- ACS (F)

### Additional Options

- Different accessories (e.g. rosettes - image 1)



image 2 (Model IST)



Example Model IST

### COMPATIBILITY OF ACCESSORIES

Interface	Version	Compatible with original manufacturer rosettes	Compatible with original Sensus rosette kit
MUK	Sensus Residia MUK	Yes with adapter ring, included in delivery program	Yes
IST	ISTA Istameter / SIEMENS 2"	Yes with adapter ring, included in delivery program	Yes
HT2	Metrona 307/1	Yes with adapter ring, included in delivery program	Yes
MET	Brunata HT3	Yes with adapter ring, included in delivery program	Yes
A34	ALLMESS UP6000	Yes	Yes
DM1	Deltamess TRK	Yes	Yes
MOC	ELSTER/Honeywell MOC	Yes	Yes
MOE	ELSTER/Honeywell MOE	Yes	Yes
WE1	Wehrle UP	Yes	Yes
WGU	Wassergeräte	Yes	Yes
MB2	Minol MB2	No	Yes
MB3	Minol MB3	No	Yes
TE1	Techem UP TE1	No	Yes



Xylem.com | Sensus.com



**UK & Ireland Inquiries | Sensus UK Systems Ltd.** | 3 Lindenwood Crockford Lane, Chineham Business Park | Basingstoke RG24 8QY UK | +44 1256 372800 | [info.gb@xylem.com](mailto:info.gb@xylem.com)

**International Inquiries | Sensus GmbH Hannover** | Meineckestr. 10 | 30880 Laatzen | Germany | +49 5102 743177 [info.int@xylem.com](mailto:info.int@xylem.com)

©2020 Sensus. All products purchased and services performed are subject to Sensus' terms of sale, available at [sensus.com](https://sensus.com). Sensus reserves the right to modify these terms and conditions in its own discretion. The Sensus logo and other Sensus products or services referenced are registered trademarks of Sensus.

This document is for informational purposes only, and SENSUS MAKES NO EXPRESS WARRANTIES IN THIS DOCUMENT. FURTHERMORE, THERE ARE NO IMPLIED WARRANTIES, INCLUDING WITHOUT LIMITATION, WARRANTIES AS TO FITNESS FOR A PARTICULAR PURPOSE AND MERCHANTABILITY. ANY USE OF THE PRODUCTS THAT IS NOT SPECIFICALLY PERMITTED HEREIN IS PROHIBITED.