

xylem



Cordonel[®]

Innovative ultrasonic metering with flow, temperature and pressure monitoring for a smarter network

SENSUS
xylem



Cordonel is a high-performance, versatile network sensor that enables you to manage your distribution network more efficiently. Providing proven in-field accuracy and reliable data whatever the installation and environmental conditions. Cordonel helps you build a smarter network for increased resilience and sustainability.

Take control with Cordonel®

Radical innovation combined with the benefits of ultrasonic technology lifts Cordonel® to the next level of performance thanks to:



R1000 ratio - ensuring Cordonel can be used across a wide range of utility applications as well as large commercial, industrial and agricultural applications. Its large range and consistency enable it to be utilised in virtually all C&I scenarios, simplifying inventory and asset management, and thereby reducing associated costs.



U0D0 capability which is well beyond the standardized test environments. The meter performs in the field as effectively as in the lab; it meets standard MID requirements in real-world applications, in all permitted installation scenarios and under the most challenging conditions. Innovative design features 3 independent measurement paths to provide best-in-class accuracy.



12l/h starting flow detection - the lowest starting flow rate of any static bulk meter (DN50) in the market, ensures even the smallest consumption is measured.



Designed to deliver **20 year' operational service** – likely the longest battery life of any C&I meter in the market.



Enhanced sensing capabilities - integrated non-immersive water temperature measurement and integrated pressure sensing (optional) which helps utilities manage their water distribution networks more effectively.



Comprehensive range of communication options, including integrated Wireless M-Bus, SensusRF, Near Field Communications (NFC), plug-in IR pulse monitoring (optional), and easy integration to external Sensus FlexNet AMI gateways and NB-IoT modules.



Get **smart alarms** including empty pipe, high flow, reverse flow, low and high pressure and temperature, leak and tamper.








Advanced Design and Capabilities of Large Sizes Cordonel® Meters

Maximise Efficiency and Reliability

Cordonel DN150 and larger use a different measuring tube geometry and ultrasonic sensor layout compared to smaller sizes. The innovative measuring tube geometry and advanced ultrasonic sensor configuration ensure you get the most accurate water meter data, even at low flow rates. Experience the benefits of sensitive low-flow detection, an impressive R1000 turndown ratio, and True UODO capability.

Streamlined Maintenance

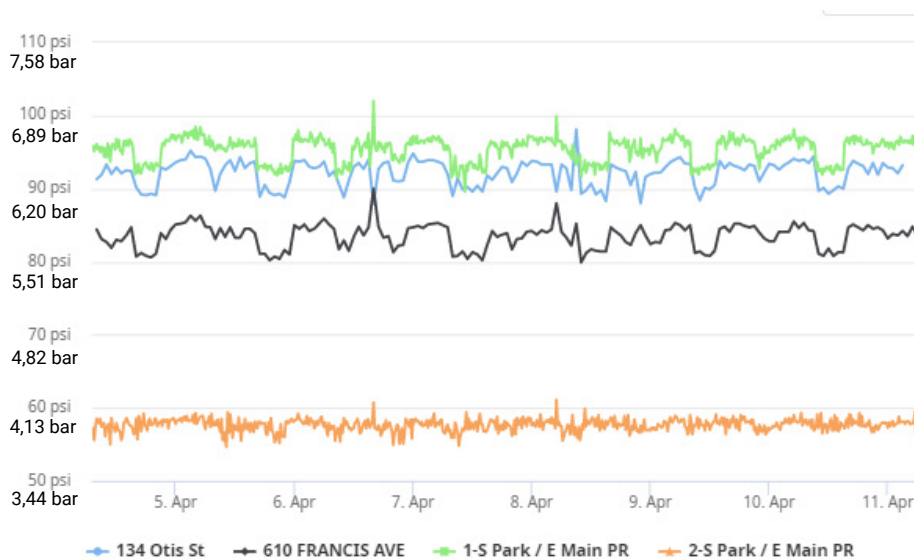
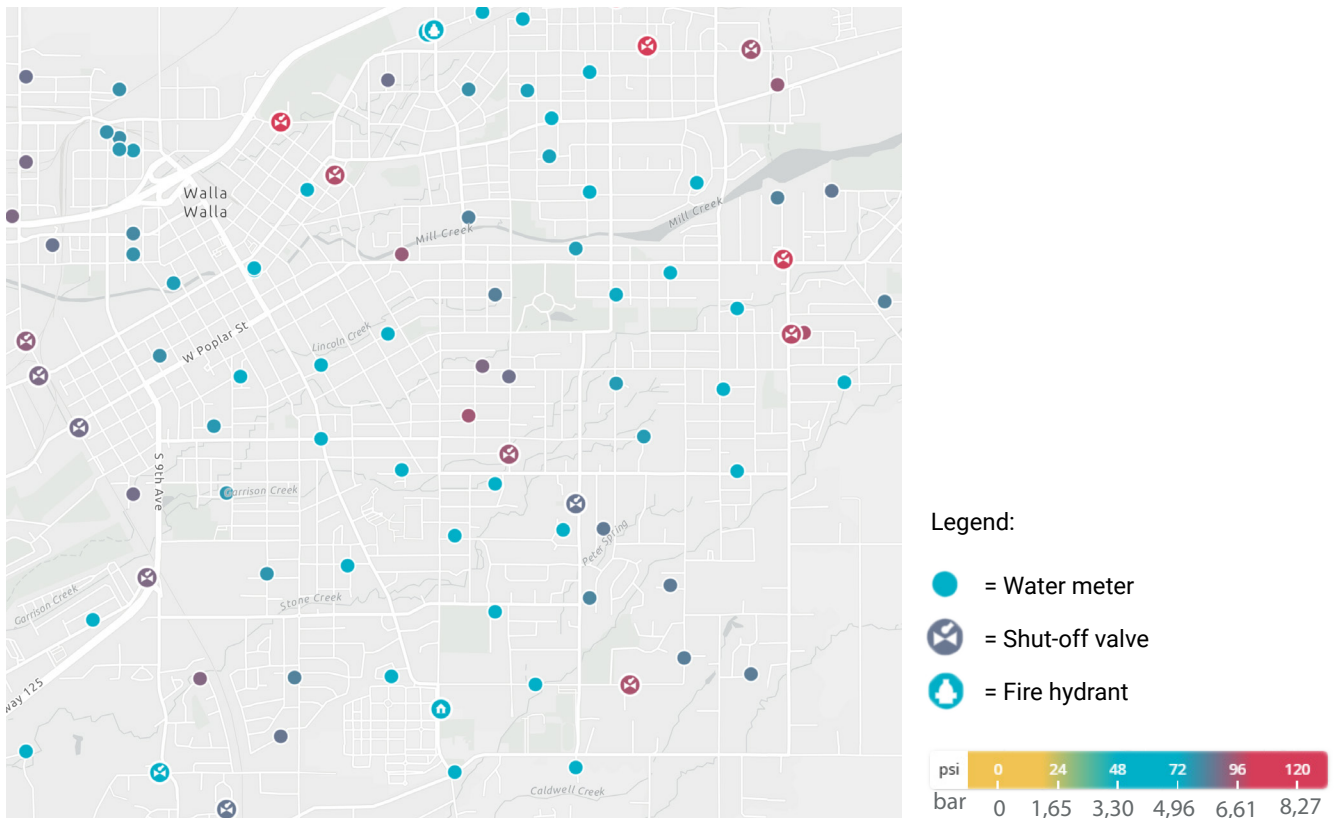
The innovative design includes a detachable measurement insert that is removable from the cast iron pipe structure, simplifying maintenance and testing. This unique feature reduces both costs and complexity, setting a new standard in battery-powered static meters. Additional benefits include:

-  **Effortless Handling:** Requires fewer technicians or mechanical access to lift the meter in-situ, saving both time and money.
-  **Easy Access:** Provides straightforward access to the pipe for inspecting upstream and downstream valves and pipes.
-  **Minimal Downtime:** Reduces service disruptions by minimizing the time before water flow can be restored.
-  **Perfect for Field Work:** Ideal for applications such as District Metering Area (DMA) and trunk main monitoring.
-  **Enhanced Protection:** Lowers the risk of damage to the meter body during installation.

With a remarkable 20-year lifespan, our Measurement Insert Technology (MIT) offers a practical and cost-effective alternative to replacing the entire meter body.

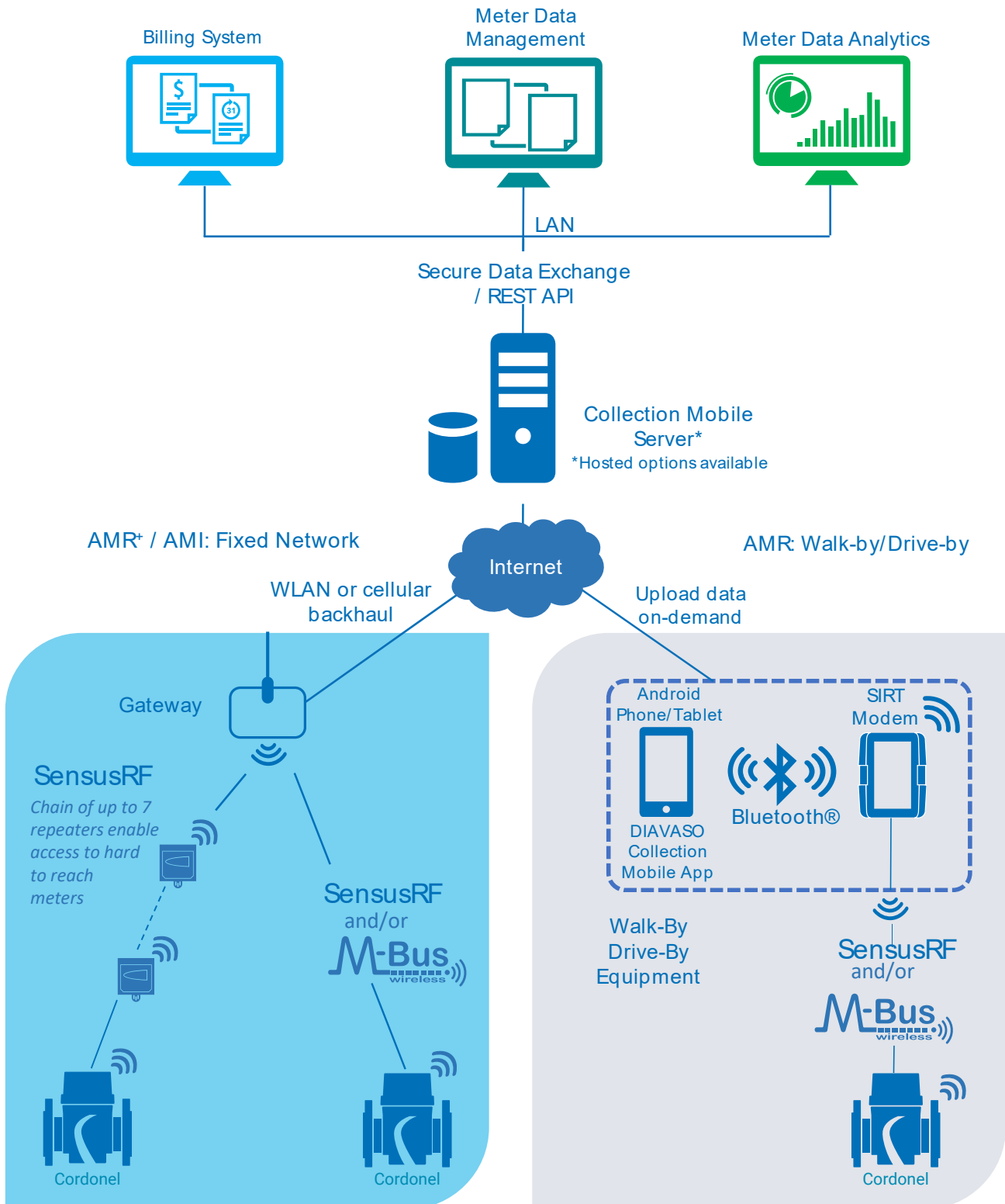
Pressure makes the invisible visible

For a fraction of the cost of traditional monitoring systems, CordoneL's integrated pressure sensor provides crucial operational data of critical services across your water distribution network.



Communication options for a smart water utility

No matter where you are on your digital journey, Cordone! securely supports walk-by/drive-by solutions (AMR) and interfaces with Sensus FlexNet, as well as multiple other AMI networks and various communication solutions, using the latest security standards.



Xylem Solutions

At Xylem, the needs and demands of our customers play a pivotal role in the development of our products. When planning and constructing water supply networks, large buildings and houses there are many technical aspects to consider in terms of energy efficiency and sustainability. At Xylem, we have not only the engineering and technical know-how but also offer a broad range of high- quality water and thermal energy meters, pump systems and water treatment units to support all your application needs, including heating and cooling solutions. For more information, contact your local Xylem sales or go to xylem.com.



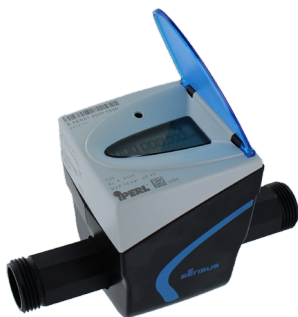
DIAVASO Mobile App Suite
Remote meter reading



DomoJet®
Domestic apartment
water meter



**LOWARA ecocirc
BASIC Series**
Efficient circulator
pump



iPERL®
Residential, electro-
magnetic water meter



Lowara GHV series
Fully automatic booster
sets for water supply
and water pressure



PolluStat®
Ultrasonic thermal
energy meter



**Working together for
a zero-carbon future.**

Our solutions leverage on high
efficiency technologies to reduce
emissions.



Sensus GmbH
Meineckestraße 10
30880 Laatzen
Germany

Tel +49 5102 740
sensus.com

Xylem Europe GmbH
Bleicheplatz 6
Schaffhausen 8200
Switzerland

Tel +41 5264 452 00
xylem.com

All information presented herein is believed reliable and in accordance with accepted engineering practices. Xylem makes no warranties as to the completeness of this information. Users are responsible for evaluating individual product suitability for specific applications. Xylem assumes no liability whatsoever for any special, indirect or consequential damages arising from the sale, resale or misuse of its products. Subject to change without notice.

© 2024 Xylem Inc. or its affiliates. All rights reserved. Cordonel is a trademark of Xylem or one of its subsidiaries.

