



HYPACK
xylem

HYPACK Multibeam & LiDAR Training Course

at Northwestern Michigan College

June 9-13, 2025

TRAINING SPOTLIGHT



HYPACK® is partnering with Northwestern Michigan College to hold an interactive classroom & in-the-field Multibeam & LiDAR Training Course, to include on-the-water time!

Topics will include:

- HYPACK Overview
- Multibeam & LiDAR Overview
- HYPACK & HYSWEEP Survey
- Hands-On Static Offset Measurements Exercise
- Patch Testing & Calibration
- MBES/LiDAR Data Processing in MBMAX64
- Data Troubleshooting
- Final Products & Utilities



Daily Schedule:

Mon 6/9: 1:00 PM* to 5:00 PM

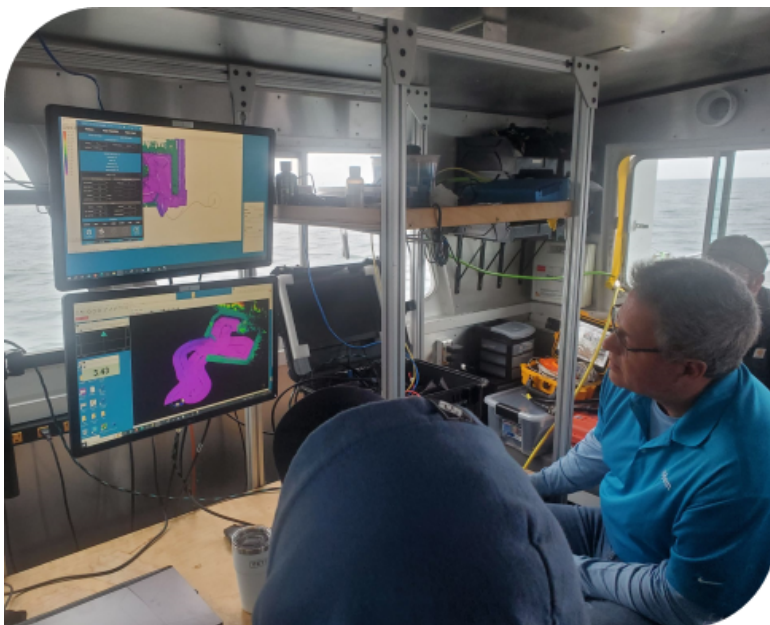
Tues 6/10: 8:30 AM to 5:00 PM

Weds 6/11: 8:30 AM to 5:00 PM

Thurs 6/12: 8:30 AM to 5:00 PM

Fri 6/13: 8:30 AM - Noon*

*Note shorter sessions Monday and Friday to accommodate travel.



Training Location

Northwestern Michigan College 715
E. Front Street
Traverse City, Michigan 49686

Registration Information

Registration fee: \$1495.00/pp

[Click here to register!](#)

For Additional Information

Contact training@hypack.com