



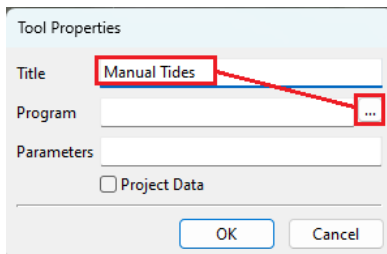
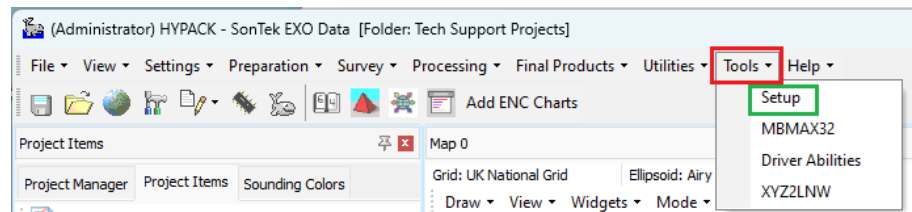
Adding Utility or Commonly Used Programs to the HYPACK 'Tools' Dropdown Menu

By Joe Burnett

In order to save space and not overwhelm our dropdown menus with too many selections, NOT every program can be put on the dropdown lists. Therefore, we added to the HYPACK Main Shell (many, many versions ago), a '**Tools**' dropdown menu, so that users can 'add' quick-links to their more commonly used programs.

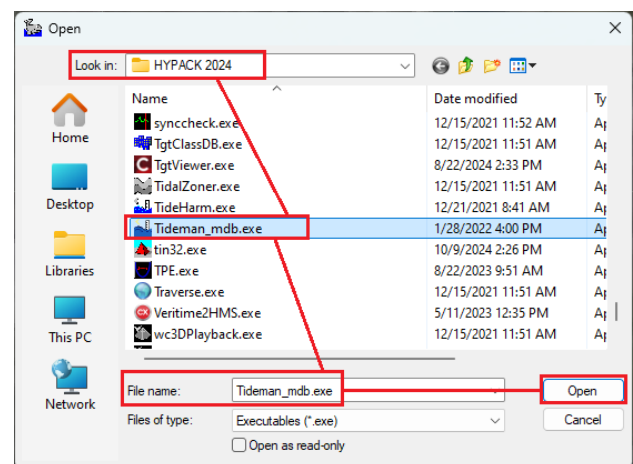
By utilizing this option, users do NOT have to minimize/close the HYPACK Main Shell, in order to access the program's icon on their Desktop, ANY program can be made accessible, right here in the Main Shell of HYPACK:

1) Click on **Tools > Setup**

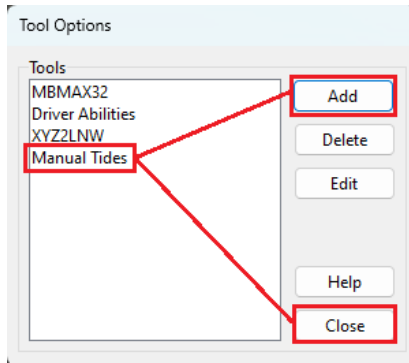
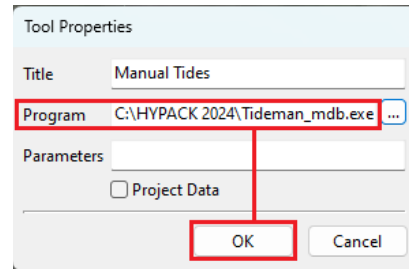


- 2) In the **Title** box, Enter the **Name** of the program you want to Add
- 3) Click on the 'ellipsis (3 dots)' button

- 4) Navigate to the folder with the executable for the program (*.exe) and select it
- 5) Click '**Open**'



- 6) The path will now appear in the **Program** box
- 7) Click **OK** to accept



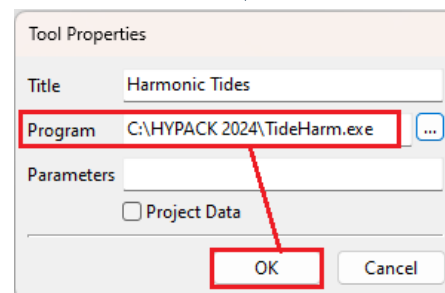
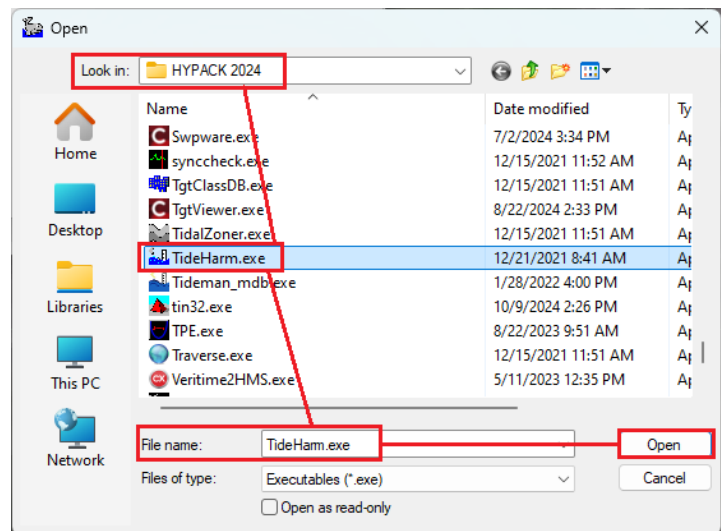
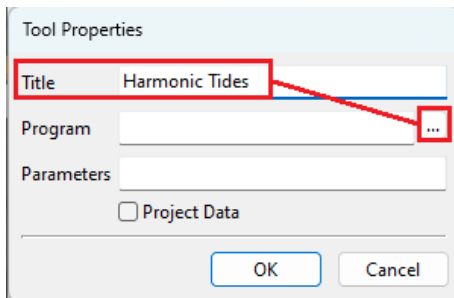
The 'newly added' program will now appear in the **Tools** list

Next, Choose **Add** to add another quick-link,

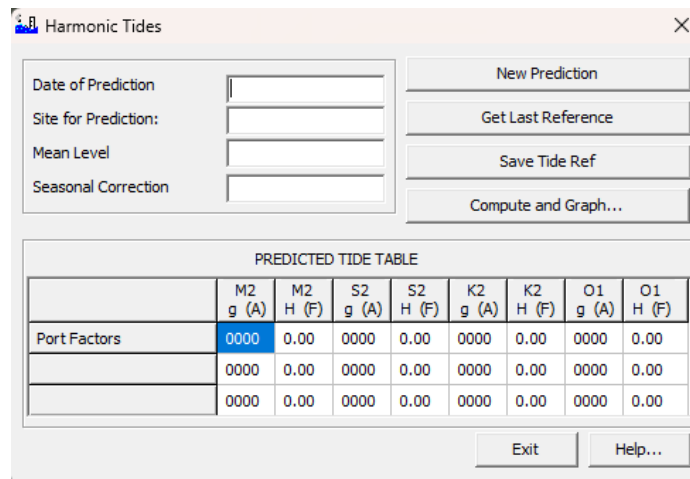
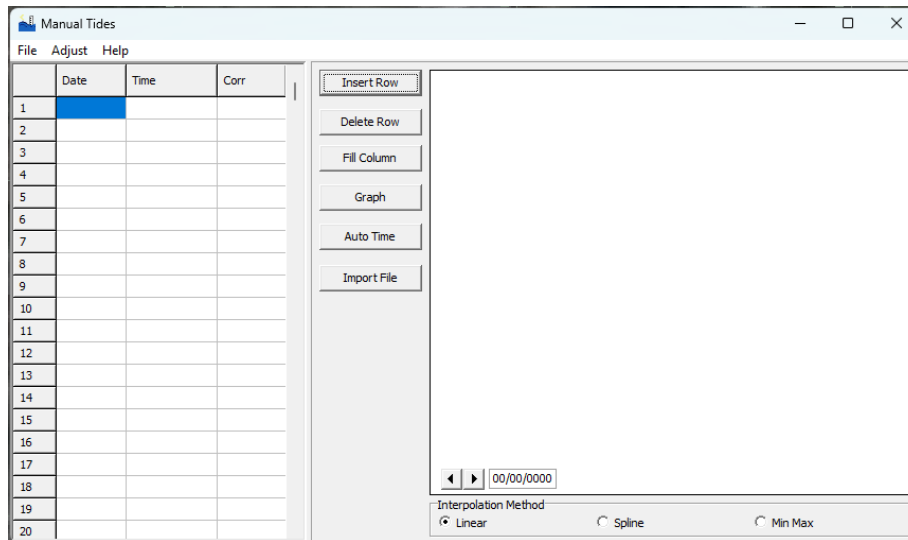
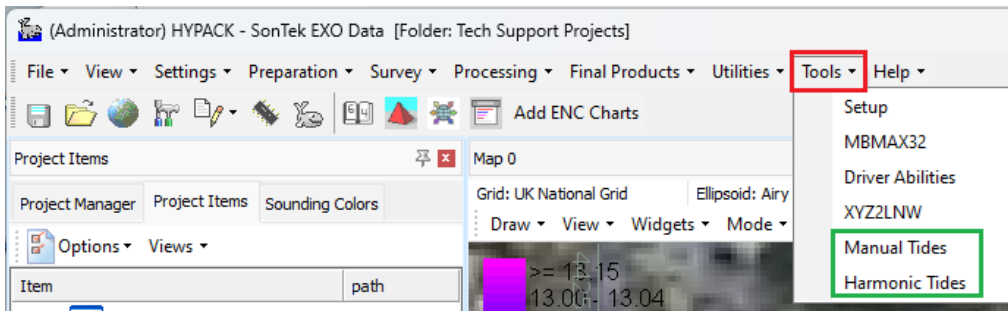
OR

Choose **Close** to end the session

Add another quick-link by repeating Steps 2 thru 7:



Now that you have 'added' your quick-links, you're ready to access your programs thru the 'Tools' dropdown menu:



IMPORTANT NOTE: Quick-links can be done for ANY *.EXE program, not just HYPACK programs.