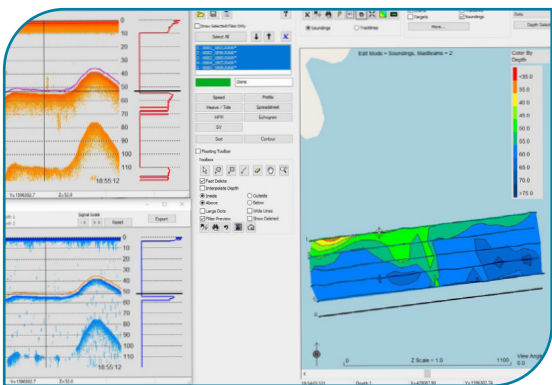




HYPACK®

SOFTWARE FOR PLANNING, COLLECTION, PROCESSING, AND CREATION OF FINAL PRODUCTS FOR HYDROGRAPHIC SURVEYS.



With over 10,000 users, HYPACK® is one of the world's most widely used hydrographic software packages. As a comprehensive, all-in-one solution, it streamlines every phase of your survey—from initial planning to final product delivery—seamlessly and efficiently within a single, powerful package. Our standard package HYPACK® MAX encompasses survey planning, navigation, data collection, processing, and analysis software for single beam sonar, side scan sonar, sub-bottom, ADCP, and magnetometers.

FEATURES

- Easy-to-use tools for defining survey boundaries, creating planned lines and mission plans, and designing channel files.
- Built-in DynamicOpenStreetMaps and compatibility with ENC's in S-57 and S-63 format to simplify project planning.
- Support for various RTK tide correction methods and worldwide geodetic models, including a tool to convert custom geoid files.

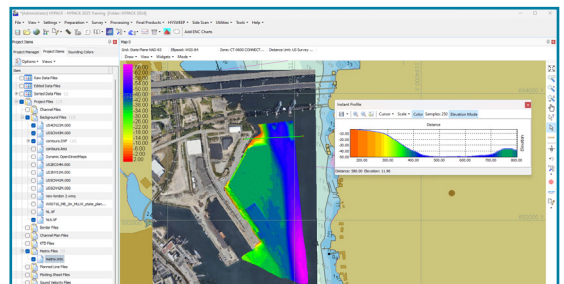
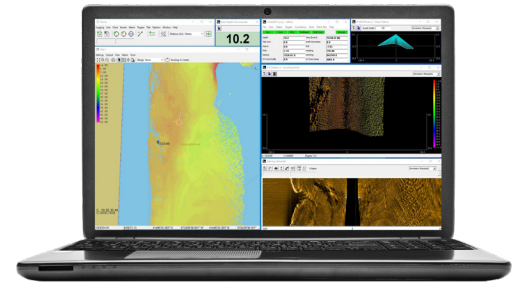
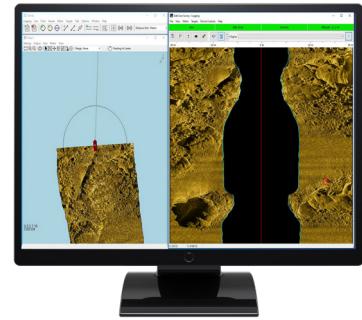
Focused HYPACK® Packages

Perfect for applications that only need a limited number of tools offered by HYPACK® MAX. Ask us about HYPACK® ECHO, Environmental Mapping, GEOPHYSICS, LITE, OFFICE, and SURVEY to learn more.



BENEFITS

- 1** Flexible licensing options and software packages allow you to select the best option for your specific survey needs and budget.
 - HYPACK® MAX encompasses survey planning, navigation, data collection, processing, and analysis software for single beam sonar, side scan sonar, sub-bottom, ADCP, and magnetometers.
 - Focused software packages offer a cost-effective way to obtain the essential set of HYPACK® MAX tools needed for specialized applications.
 - Lease HYPACK® software packages for as little as three days – take advantage of easy lease extension and the option to apply up to 85% of the lease price paid to the purchase of a full package.
- 2** Simple to set up, configure, and integrate with most sensors on the market today including:
 - Acoustic doppler current profilers (ADCPs)
 - GNSS positioning devices
 - Magnetometers
 - Motion sensors
 - Multibeam and LiDAR devices (HYSWEEP license is required)
 - Single beam sonars
 - Side scan sonars
 - Sub-bottom systems
- 3** Access to our dedicated technical support team, who are ready to assist with expert guidance and solutions for even the most complex scenarios.
- 4** Quarterly updates provide new features, performance enhancements, and timely bug fixes.



Compatibility with over 500 sensors, with additional drivers added every year as new technology emerges.

Ability to interface with unmanned and autonomous platforms as well as conventional vessel autopilot systems to optimize survey efficiency.

Real-time navigation and data collection display for surveyors and helmsman, including remote viewing capabilities.

Powerful processing tools which allow you to manually clean or apply automatic filters to your data.

Tools for final product creation and visualization, include surface modeling, 3D point cloud display, volume calculations, chart plotting, and ENC generation.

Ability to export to a wide range of formats for seamless data sharing and integration with external CAD, GIS, analysis, and visualization software.

SUPPORTED CHART FILES INCLUDE
TIF and Esri TIF, DXF, georeferenced
image files, S57, S63, S102

HYPACK, a Xylem brand
56 Bradley Street
Middletown, CT 06457, USA
+1.860.635.1500
sales@hypack.com
hypack.com

© 2025 Xylem Inc. or its affiliate. All rights reserved. HYPACK is a trademark of Xylem or one of its subsidiaries.

