



e-SVX Smart Pumps

Integrated pump, motor & variable speed drive solutions, **powered by hydrovar® X**

e-SVX Smart Pumps feature the right combination of ultra-premium efficient motors with integrated variable speed drives and pumps to ensure great performance and a rapid return on investment in nearly any application. The result is intelligence, performance, connectivity, and simplicity in one comprehensive package, from one reliable source - Goulds Water Technology.

Simple: Built-in application software makes the drive one of the easiest to commission, program and operate, enabling virtually any configuration of pumps.

Sustainable: No rare earth materials are used to minimize product availability challenges and address environmental concerns while offering smart technology and superior performance.

Intelligent performance: Advanced system controls (up to 8 pumps) are customizable for a wide range of applications. The IE5 "ultra-premium" hydrovar X smart motor provides one of the broadest efficiency ranges in the industry.

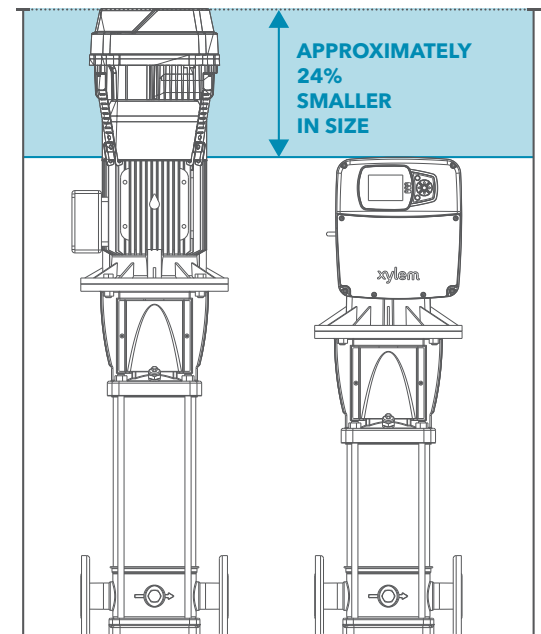
Ease of installation & maintenance: Integrated pump and hydrovar X motor design eliminates the need for additional wiring, labor and associated costs.

Built-in protections: Integrated functions provide protection for the pump and motor while optimizing performance.

Easy service: VFD and/or motor can be easily replaced individually, minimizing downtime and expensive repair.

5th generation
Hydrovar®

new design
hydrovar® X

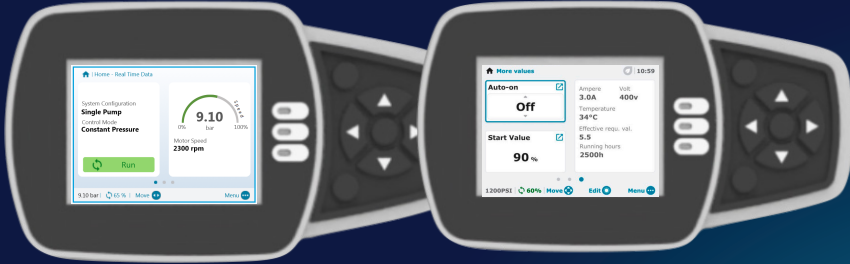


Compact design: hydrovar X motors offer higher performance with a reduced footprint when compared to the legacy Packaged Hydrovar solution. Increased performance reduces electricity consumption and lowers life cycle costs.

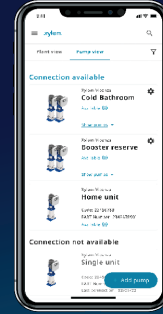
Unleash the power of hydrovar X!

Don't hold back your imagination!

With the graphical color display, you can quickly set-up and navigate the menu of your unit: check all the parameters and choose the perfect unit configuration to fit your installation. No time to do it? Genie will start up and run the unit for you!



Check your systems from wherever



Download the mobile app



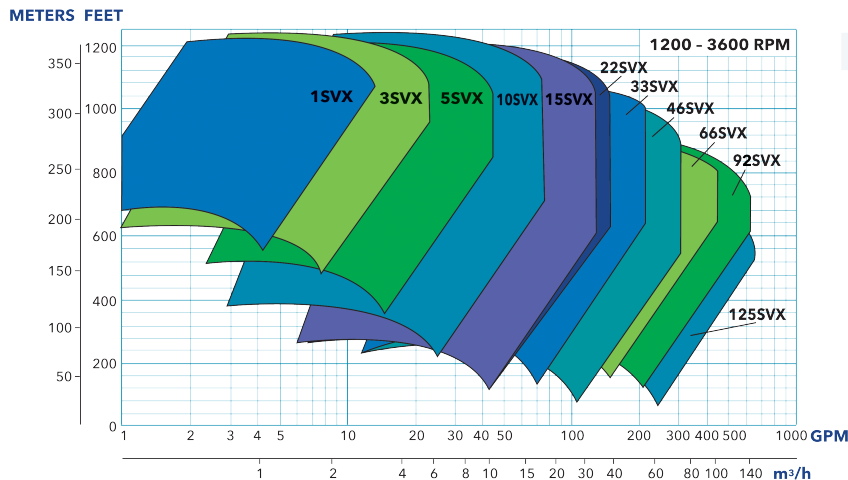
hydrovar X and Avenor, better together!

hydrovar X can communicate with Avenor, Xylem's IoT platform, for a complete overview of all connected assets, anytime, anywhere. Avenor collects historical data to analyze trends and generate alerts preventing failures and equipment downtime.

e-SVX Smart Pump Specifications

Flow rate:	up to 640 GPM (145 m ³ /h)
Head:	up to 1200 ft (366 m)
Temperature of pumped liquid:	-20°F to 250°F (-30°C to 121°C)
Maximum operating pressure:	580 psi (40 bar)
Environment temperature:	-4°F to 122°F (-20°C to 50°C)

e-SVX Smart Pump Family Curves



hydrovar X Smart Motor Specifications

Display:	Graphic color
Control modes:	Actuator, Constant Pressure. Proportional Pressure, Proportional Quadratic Pressure, Constant Flow, Constant Temperature, Constant Level
Multi-pump:	up to 8 pumps
Enclosure:	IP55/NEMA4
Working temperature:	-4°/+122°F (-20°/+50°C)
Communication protocols:	MODBUS® RTU, BACnet MS/TP
Features:	IE5 synchronous motor
Mobile app:	Bluetooth®

Xylem Product Cybersecurity - Xylem values your system security and the availability of your critical services. To learn more please visit: www.xylem.com/security.



Xylem Inc.
www.xylem.com/goulds

Xylem and Hydrovar are registered trademarks of Xylem Inc. or one of its subsidiaries. Goulds is a registered trademark of ITT Manufacturing Enterprises LLC and is used under license. MODBUS is a registered trademark of Schneider Electric USA, Inc. The Bluetooth word mark and logos are registered trademarks owned by Bluetooth SIG, Inc. and any use of such marks by Xylem Inc. or one of its subsidiaries is under license. All other trademarks or registered trademarks are property of their respective owners.

© 2024 GWT-eSVX-SS-120058-R2 February 2024

Learn more about e-SVX Smart Pumps:

