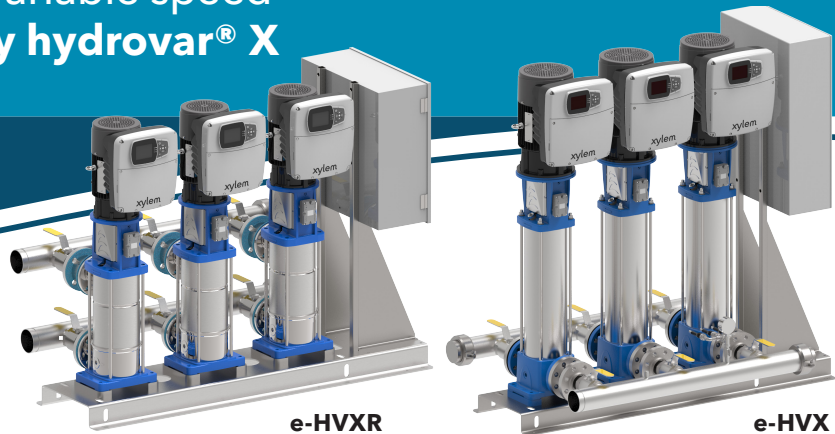


AQUAFORCE® e-HVX & e-HVXR Packaged Booster Systems

Integrated pump, motor & variable speed drive solutions, **powered by hydrovar® X**



AQUAFORCE e-HVX & e-HVXR Packaged Booster Systems feature the right combination of ultra-premium efficient motors with integrated variable speed drives and pumps to ensure great performance and a rapid return on investment in nearly any application. The result is intelligence, performance, connectivity, and simplicity in one comprehensive package, from one reliable source - Goulds Water Technology.

Simple: Built-in application software makes the drive one of the easiest to commission, program and operate, enabling virtually any configuration of pumps.

Sustainable: No rare earth materials are used to minimize product availability challenges and address environmental concerns while offering smart technology and superior performance.

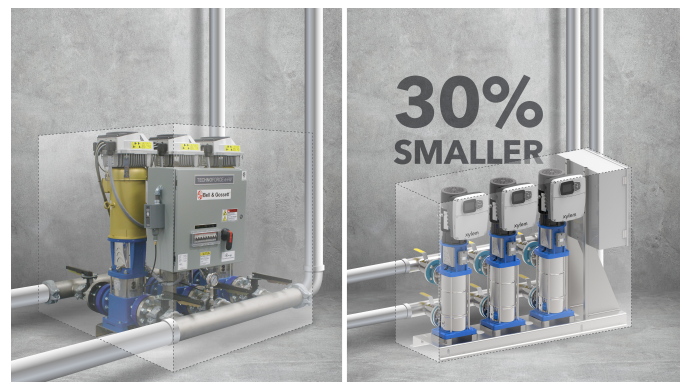
Intelligent performance: Advanced system controls are customizable for a wide range of applications. The IE5 "ultra-premium" hydrovar X smart motor provides one of the broadest efficiency ranges in the industry.

Reliable: Multi-master control functionality ensures that in the event of a fault or failure within one or more pumps in a package, that the system will continue to operate until corrective action can be taken.

Built-in protections: Integral system intelligence provides electrical and mechanical protection.

Condition monitoring: Each booster system is fitted with Xylem's optimize® sensors to monitor the health of the pumps. Using predictive analysis, optimize identifies potential problems with equipment before they occur, to help manage system reliability and maintenance.

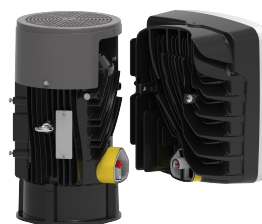
Compact design: The new e-HVXR features a reduced package footprint relative to legacy e-HV systems and competitive products, allowing for space savings up to 30% due to the orientation of the suction and discharge manifolds.



e-HV

e-HVXR

Easy service: VFD and/or motor can be easily replaced individually, minimizing downtime and expensive repair.



Separate quick connect components allow users to replace the drive or the motor independently. The integrated electrical socket requires no additional wiring, allowing a true plug and play solution versus buying a new motor and drive combination.

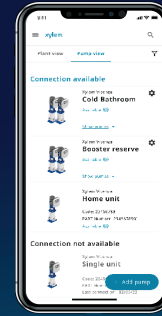
Unleash the power of hydrovar X!

Don't hold back your imagination!

With the graphical color display, you can quickly set-up and navigate the menu of your unit: check all the parameters and choose the perfect unit configuration to fit your installation. No time to do it? Genie will start up and run the unit for you!



Check your systems from wherever



Download the mobile app



hydrovar X and Avenсор, better together!

hydrovar X can communicate with Avenсор, Xylem's IoT platform, for a complete overview of all connected assets, anytime, anywhere. Avenсор collects historical data to analyze trends and generate alerts preventing failures and equipment downtime.

e-HVX & e-HVXR Packaged Booster Systems Specifications

Flow rate:	up to 2100 GPM (477 m ³ /h)
Head:	up to 880 ft (189 m)
Temperature of pumped liquid:	32°F to 180°F (0°C to / 82°C)
Maximum operating pressure:	380 psi (26 bar)
Environment temperature:	-4°F to 122°F (-20°C to 50°C)
Multi-pump:	up to 3 pumps (booster package)

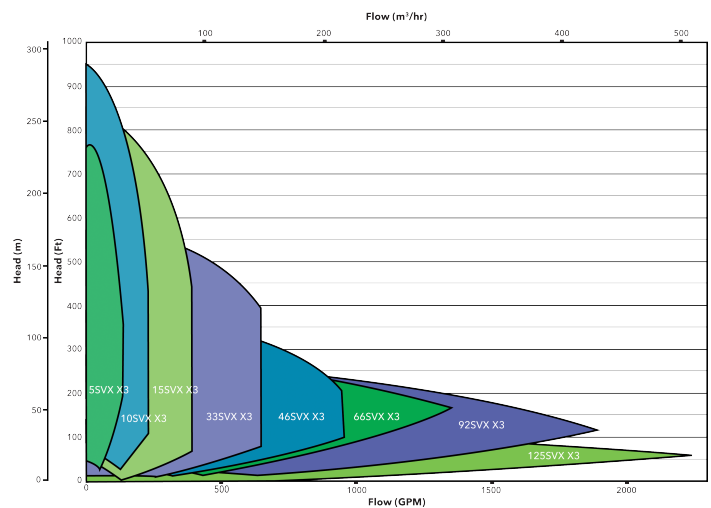
hydrovar X Smart Motor Specifications

Display:	Graphic Color
Control modes:	Actuator, Constant Pressure. Proportional Pressure, Proportional Quadratic Pressure, Constant Flow, Constant Temperature, Constant Level
Enclosure:	IP55/NEMA4
Working temperature:	-4°/+122°F (-20°/+50°C)
Communication protocols:	MODBUS® RTU, BACnet MS/TP
Features:	IE5 synchronous motor
Mobile app:	Bluetooth®

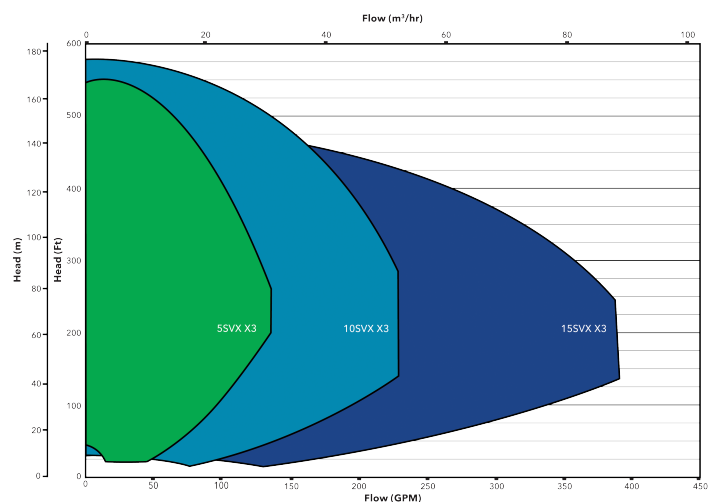
Learn more about e-HVX and e-HVXR Packaged Booster Systems



e-HVX Packaged Booster System Family Curves



e-HVXR Packaged Booster System Family Curves



Xylem Inc.
www.xylem.com/goulds

Xylem, Goulds Water Technology, AQUAFORCE and Hydrovar are registered trademarks or trademarks of Xylem Inc. or one of its subsidiaries. MODBUS is a registered trademark of Schneider Electric USA, Inc. The Bluetooth word mark and logos are registered trademarks owned by Bluetooth SIG, Inc. and any use of such marks by Xylem Inc. or one of its subsidiaries is under license. All other trademarks or registered trademarks are the property of their respective owners.