

# Flygt BIS-1 biogas support system

## DESCRIPTION & TECHNICAL DATA

### The Flygt BIS-1 biogas support system offers easy installation and operation of submersible mixers in a biogas digester for both new and existing biogas digesters.

Flygt submersible mixers installed on the BIS-1 support system creates a complete mixing system for biogas digesters that ensures proper digester operation and reliably maximizes gas production with minimum installation, maintenance and service time.

#### Function

The BIS-1 biogas support system was engineered to support critical functions for optimal biogas digestion operation including the ability to:

- move the mixer up and down on the guide bar without opening the digester roof or hatch
- rotate the mixer +/- 45 degrees in the horizontal plane without opening the digester roof or hatch
- simply lift the mixer out of the digester without emptying the tank

#### What the BIS-1 support system means for you

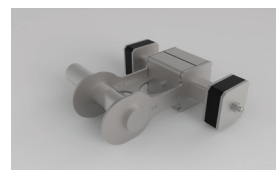
- Reduced system downtime and maintenance costs thanks to:
  - quick and easy equipment installation and mixer maintenance procedure
  - standardized parts that are available for fast delivery
  - easy adjustability of mixer height or angle without opening the digester roof or hatch
- Reliability and safety thanks to:
  - patented guide bar connection - guarantees a secure and durable guide bar connection, minimizing vibration and thereby maximizing system longevity
  - intermediate support - enables a mixer to pass over an intermediate wall bracket smoothly without obstruction
  - compatibility with locally supplied guide bars
  - corrosion and abrasion resistant - engineered to withstand minimum 5 years of demanding service inspection

#### Technical data

- Compatible with 4600 Series and 4460 mixers (1.3 m propeller)
- Every steel component is made with SS316
- Equipped with Pfaff certified winch
- Winch package is equipped with fibre rope
- Designed for 100x100x4 mm guide bar
- Designed for cables with max outer diameter of 26 mm
- Suitable for wall thicknesses of 200, 300, and 500 mm (other thicknesses available on special order)



*Flygt 4670 mixer installed on the BIS-1 biogas support system*



*Clearance free guide bar connections*



*Outer assembly with winch package*

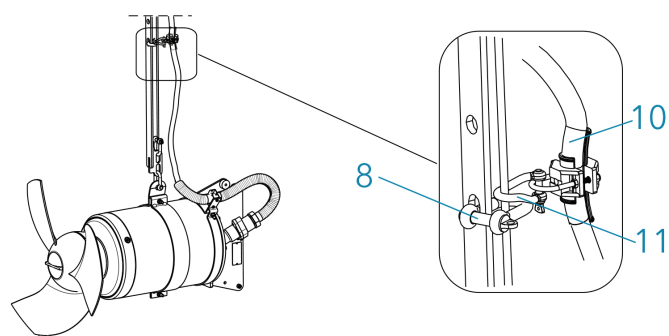


*Intermediate wall support*

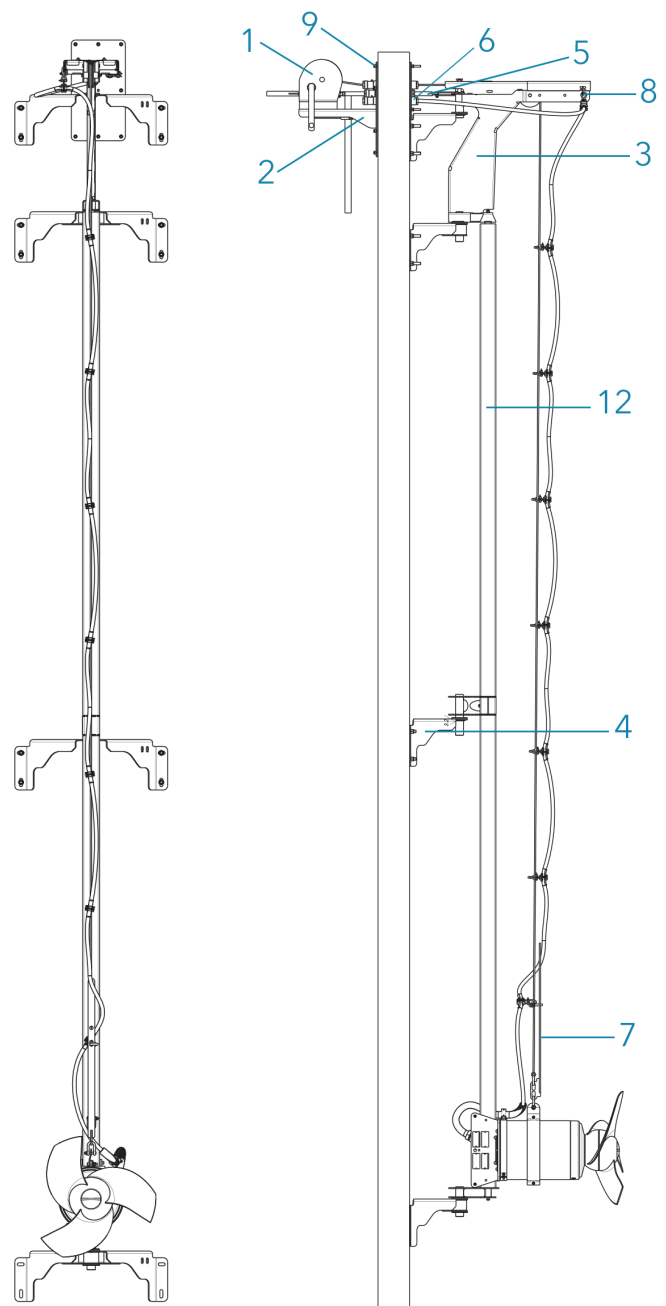
# Flygt BIS-1 biogas support system DESCRIPTION & TECHNICAL DATA

## BIS-1 biogas support system composition

Item No.	Denomination	Part Number	
1	Winch package	84 63 89	
2	Outer assembly	792 75 00	
3	Inner assembly	792 74 00	
4	Intermediate wall support	792 76 00	
5	Pivoting arm (part number depends on wall thickness)	200 mm	792 60 20
		300 mm	792 60 30
		500 mm	792 60 50
6	Cable bushing (part number depends on cable outer diameter)	18-20 mm	638 27 04
		20-22 mm	638 27 05
		22-24 mm	638 27 14
		24-25 mm	638 27 15
7	Lifting bracket	4600 mixer	802 16 00
		4400 mixer	82 33 45
8	Shackle	4600 mixer	82 33 45
		4400 mixer	85 01 80
<b>Mounting Kit</b>			
9	Anchor ampule (M16)	84 56 79	
	Anchor rod (M16)	83 17 27	
<b>Cable Handling</b>			
10	Cable holder (part number depends on cable outer diameter)	17-25 mm	85 01 24
		23-30 mm	85 01 25
11	Shackle for cable holder	85 01 26	
<b>Guide Bar</b>			
12	Guide bar 3 m SS316 (100x100x4 mm)	623 57 01	
	Guide bar 6 m SS316 (100x100x4 mm)	623 57 03	



BIS-1 support system cable fixation



BIS-1 support system front view

BIS-1 support system side view