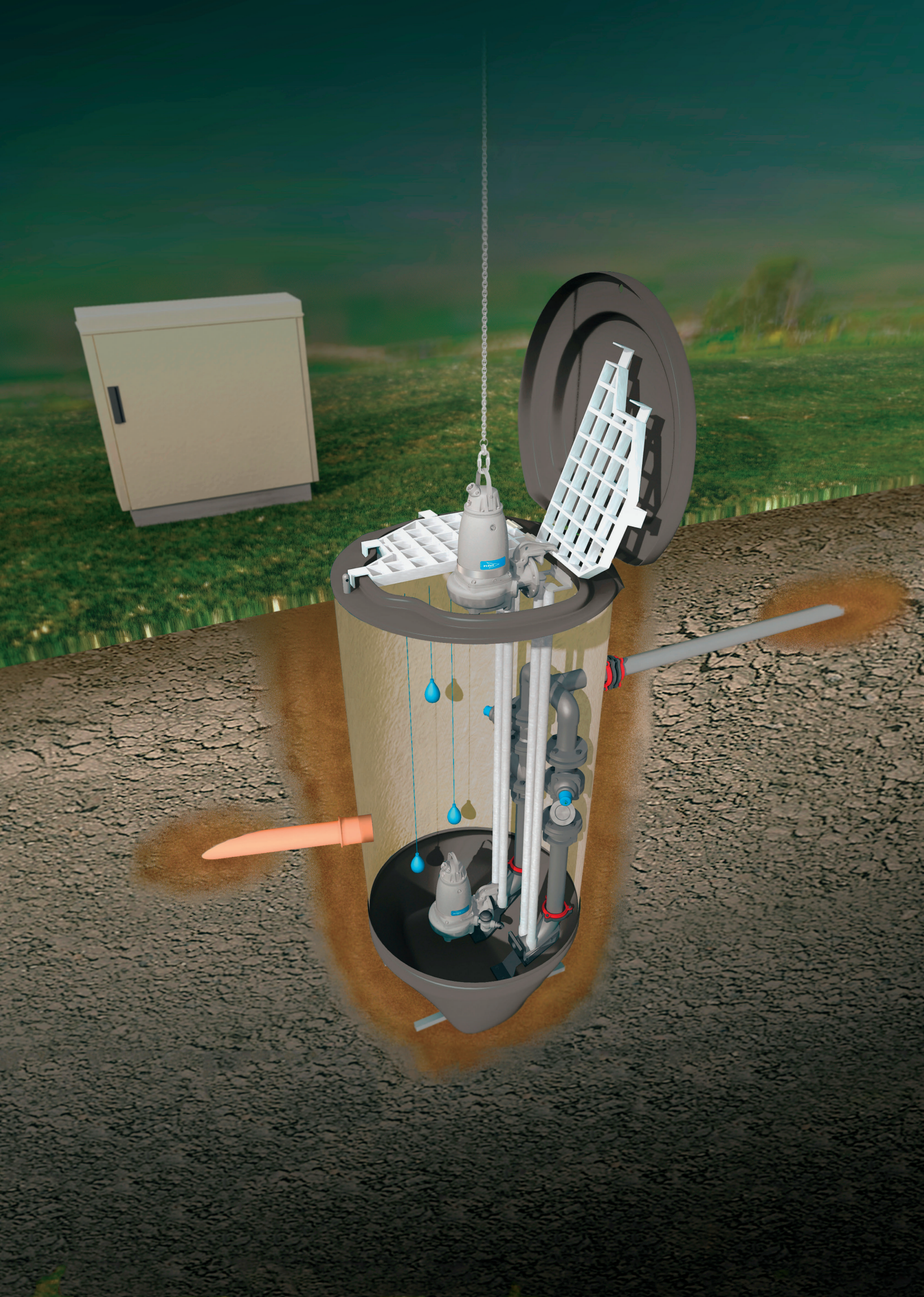


# Xylem GRP Packaged Pump Station

TURNKEY STATIONS

**xylem**  
Let's Solve Water







# Wet type package pump stations

These are waste water, rain water or drainage pump stations. They can be used in all applications where wet type pumping systems are required such as municipal, industrial and building projects.



## SPECIFICATIONS

- Production is made under Xylem GRP Packaged Pump Station
- The entire product is 12050-1 CE - certified
- It has a design that allows for the assembly of 1, 2, 3 or 4 pumps
- Station diameters range from 1m to 4m.
- Station depths range from 1m to 13m.
- Tested conical sump (up to 2 pumps and up to 1.8m diameter)

## BENEFITS

- CE- certified product
- World class production
- Fast delivery together with all mechanical and electrical components
- Wide range of products
- Customized production in different diameters and depths
- Ensuring energy saving with efficient waste water pumps

WORKING PRINCIPLE	ASSEMBLY TYPE OF THE PUMP
The waste water, which is passed through the basket screen (optionally) or muncher (optionally) at the inlet of station, is pumped by wet-installed submersible pumps in the station	Wet type guide rail installation
PIPE MATERIAL FOR THE STATION	PRODUCT MATERIAL
Stainless Steel SS 316 / Stainless Steel SS 304; possible to produce galvanized steel and HDPE	Pump station is made of GRP material. Pump station covers may be made of GRP, stainless steel or composite material depending on customer needs.



# Dry type package pump stations

These are waste water, rain water or drainage pump stations. They can be use in all application where dry type pumping system sare required such as municipal, industrial and building projects.

## Specifications

- Production is made under Xylem GRP Packaged Pump Station as the registered trade mark of Xylem
- The entire product is 12050-1 CE- certified
- It has a design that allows for the assembly of 1, 2, 3 or 4 pumps
- Station diameters range from 1m to 4m.
- Station depths range from 1m to 13m.

## Benefits

- CE - certified product
- World class production
- Fast delivery together with all mechanical and electrical components
- Wide range of products
- Customized production in different diameters and depths
- Ensuring energy saving with efficient waste water pumps



### WORKING PRINCIPLE

The waste water, which is passed through the basket screen (optionally) or muncher (optionally) at the inlet of station, is pumped by dry-installed submersible pumps in the station.

### ASSEMBLY TYPE OF THE PUMP

The pumps are dry-mounted vertically or horizontally in the dry volume at the station.

### PIPE MATERIAL FOR THE STATION

Stainless Steel SS 316 /  
Stainless Steel SS 304 ;  
possible to produce galvanized steel  
and HDPE

### PRODUCT MATERIAL

Pump station is made of  
GRP material.  
Pump station covers may  
be made of GRP, stainless steel  
or composite material depending  
on customer needs.





# Functional equipment

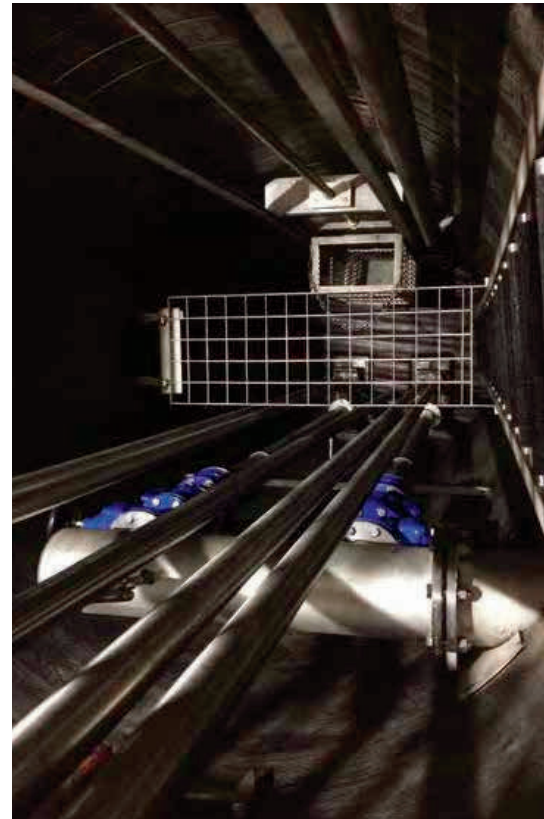
The following accessories are used with the Xylem GRP Packaged Pump Station according to the needs.

Non-clogging  
submersible  
wastewater pump  
with cutter, grinder,  
vortex  
or open channel  
impeller

External valve  
chamber  
(GRP material)

Cover resistant to  
traffic load  
(cover types  
resistant to traffic  
load upto 40 tons)

Forced  
ventilation with  
activated  
carbon filter



- External muncher room (GRP material)
- External pump room (GRP material)
- External screen (basket) (GRP material)
- External sedimentation chamber (GRP material)
- Stainless steel sliding (penstock) cover (manual)
- Stainless steel basket screen
- Stainless steel ladder
- Muncher
- Gauges: hydrostatic, ultrasonic or digital type
- Control Panel
- External sliding cover (penstock) chamber (GRP material)



# Retro fit Pump Stations

These are wastewater ,rainwater or drainage pump stations. They may be used to ensure functioning or more efficient operation of old, in efficient or in active reinforced concrete or package type pumps such as municipal, industrial and building projects.

Non-clogging submersible wastewater pump with cutter, grinder, vortex or open channel impeller

Station covers made of GRP, stainless steel, galvanized steel or composite material

In-station piping, collector and valve system

## Specifications

Xylem ensures retro fit and revision of all sizes of mechanical or electrical equipment for reinforced concrete or package pump stations.

## Benefits

Xylem, which manufactures mechanical and electrical equipment at world standards, assembles pump stations on site together with all their mechanical and electrical components. It has a wide range of products with short lead times.

## Pump assembly type

Wet type pump assembly.



- Hydrostatic, ultrasonic or digital type gauges
- Stainless steel sliding (penstock) cover (manual)
- Stainless steel basket screen
- Stainless steel ladder
- Muncher
- Control Panel
- Forced ventilation with activated carbon filter





# Ventilation

The lack of correct design may cause sedimentation and sludge accumulation, thus generating bad odour and dangerous gas formation like Hydrogen sulphide which might pose a serious threat to personnel. We offer options of conical tested base, flush valve to help prevent sedimentation. We also offer activated carbon filter to resolve bad odour.



**Self-ventilated cover** against colorless and odorless methane gas, which is lighter than air with its volatile characteristic, but which can be explosive when it is compressed.

**Forced ventilation** Elimination of bad odor and harmful gases inside the station by forcibly removing them from the system and passing them through activated carbon.



**Flush valve option** helping to keep the sump clean in every pumping cycle.



**Tested Conical Sump Bottom** Best design developed to prevent sedimentation, sludge and waste accumulation as well as gas and odor.

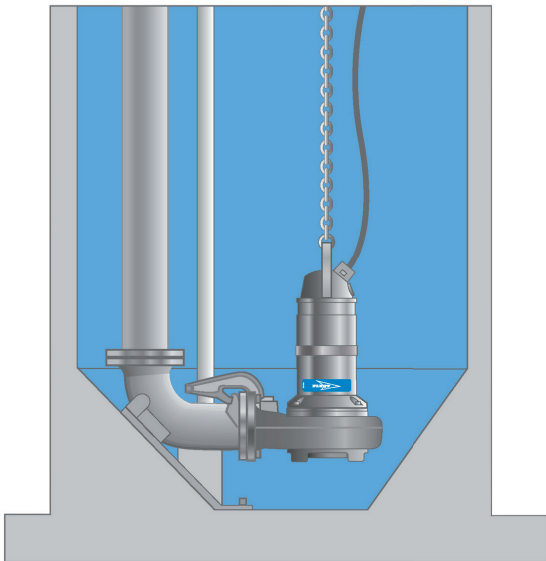


# Self-cleaning conical base design

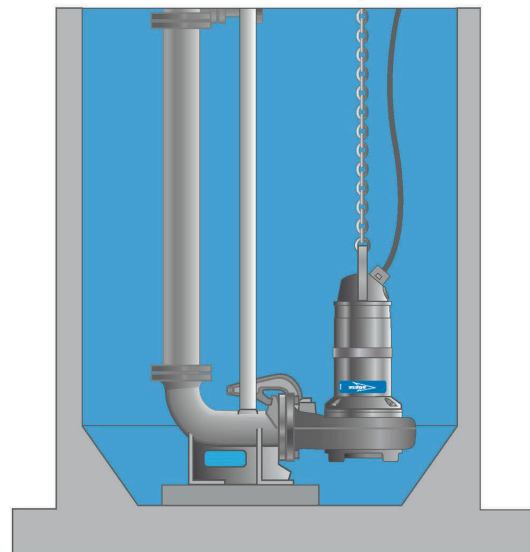
The conventional flat bottom pump chambers need regular cleaning, and require constant maintenance costs. Cleaning the pump chamber may pose safety and health hazards to personnel.

**Xylem GRP packaged pump station chambers reduce the accumulation of solids and sludge in two ways: Their base area is small. This means that all settled materials are collected directly under the pump, where the suction is at the strongest level.**

Xylem GRP packaged pump station chamber geometry optimizes water flow at the pump station base. The outlet connections are designed to optimize flow over the base.



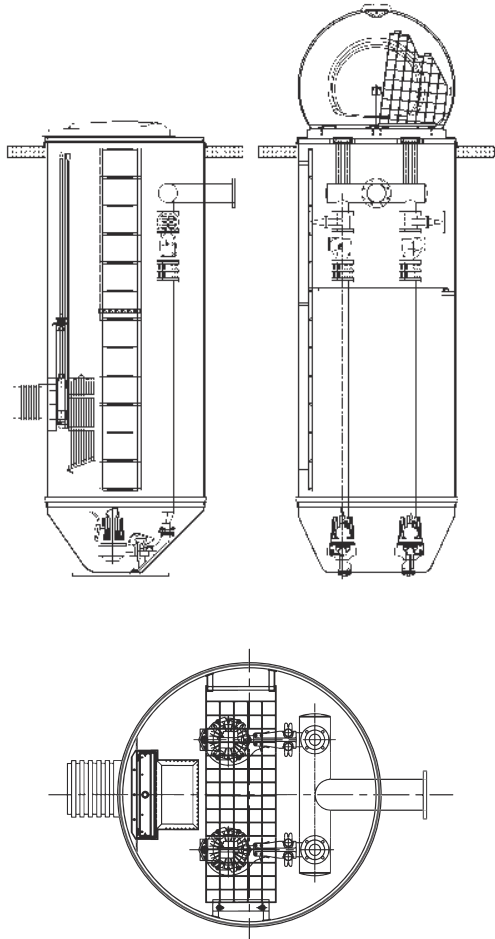
Self cleaning, tested conical sump pit bottom is used in Xylem GRP prefabricated package pump stations up to 1.8m with 2 pumps.



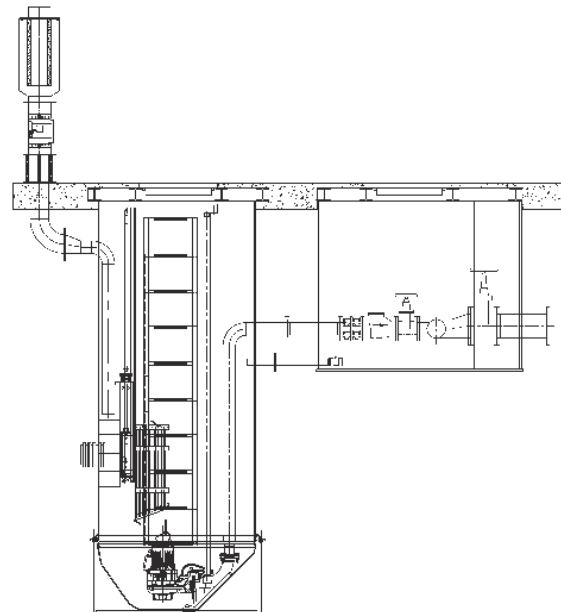
Xylem GRP prefabricated package pump stations are available with diameter larger than 1.8m, able to accommodate 3 or 4 pumps.

# Leave the job to the expert

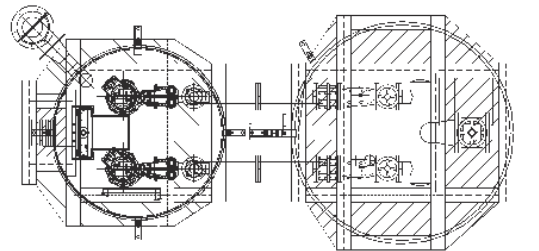
Xylem makes station's mechanical and electrical project designs before manufacturing package pump stations, and presents them to the client for approval. In this way, it provides error-free solutions during the supply, assembly and operation phases.



A complete solution is provided with in a single chamber with all components of prefabricated pump stations.



Optional applications such as external valve room, cover resistant to traffic load, forced ventilation with activated carbon filter, sliding cover and basket screen are possible.





# Certification

## CE Certificate EN 12050-1 Regulation (EU) No 305/2011

Xylem, a leading company in the field of production and sale of prefabricated pump stations, makes stations out of GRP materials based on the CE certification. Prefabricated pump station under Xylem GRP packaged pump station as the registered trade mark of Xylem are certified with EN 12050-1 in accordance with the law no 4703 and the associated regulation no 305/2011/EU.



  
Strojirenský zkušební ústav, s.p., Hudcova 424/56b, 621 00 Brno, Česká republika  
Certifikační orgán certifikující produkty  
Engineering Test Institute, Public Enterprise, Hudcova 424/56b, 621 00 Brno, Czech Republic  
Product Certification Body

### CERTIFIKÁT CERTIFICATE

Číslo:  
Number: **E-30-00887-17**

Držitel certifikátu – výrobce:  
Owner of Certificate – Manufacturer: Anadolu Flygt Pompa Paz. ve Tic. A.Ş.  
Gebze Organize Sanayi Bölgesi 1000.Cd.  
No: 1015, Çayırova, KOCAELI  
Turecko - Turkey

Výrobky:  
Products: Čerpací stanice odpadních vod  
Wastewater lifting plants

Typové označení:  
Type designation: P.P.S.  
viz 2. strana / see Page 2

Aplikovaná harmonizovaná norma:  
Applied harmonized standard: ČSN EN 12050-1:2002, Tab. ZA.1

Podklad pro vydání certifikátu:  
Basis of Certificate issuance: Protokol o posouzení vlastností stavebního výrobku  
č. 1015-CPR-30-13568 ze dne 2017-09-13  
Report on assessment of the performance of construction  
product 1015-CPR-30-13568 of 2017-09-13

Strojirenský zkušební ústav, s.p., potvrzuje, že posoudil vlastnosti stavebních výrobků v souladu s ustanovením bodu 1.4 (b) Systém 3 přílohy V nařízení Evropského parlamentu a Rady (EU) č. 305/2011 ze dne 9. března 2011 (nařízení o stavebních výrobcích neboli CPR), v platném znění, a stanovil vlastnosti základních charakteristik stavebních výrobků.

Tento certifikát nenahrazuje příslušný dokument vydaný oznámeným subjektem.

*Strojirenský zkušební ústav, s.p. (Engineering Test Institute, Public Enterprise) hereby confirms that it has carried out an assessment of the performance of the construction products in accordance with Item 1.4 (b), System 3, Annex V of Regulation (EU) No. 305/2011 of the European Parliament and of the Council of 9 March 2011 (Construction Products Regulation – CPR) as amended, and has determined the performance of essential characteristics of the construction products.*

*This Certificate is not a substitute for relevant document issued by Notified Body.*

Brno, 2017-09-13

  
Ing. Tomáš Hruška  
ředitel – Director

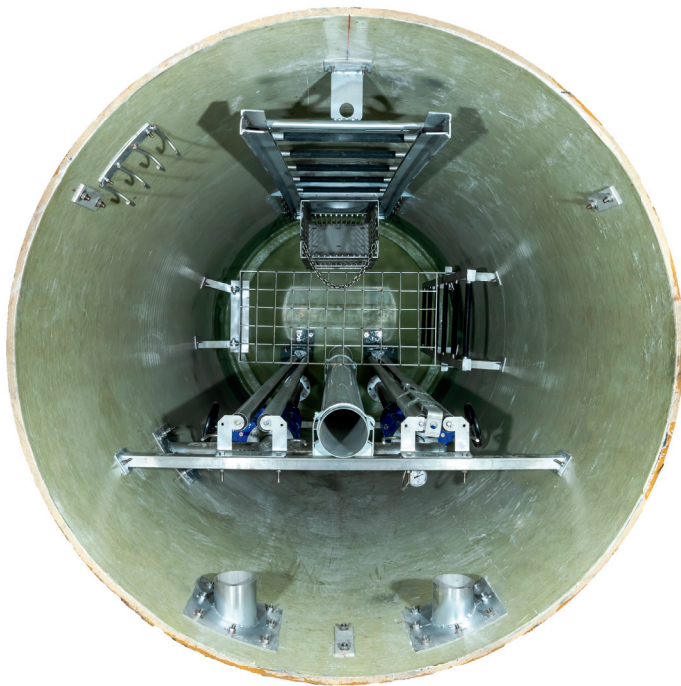
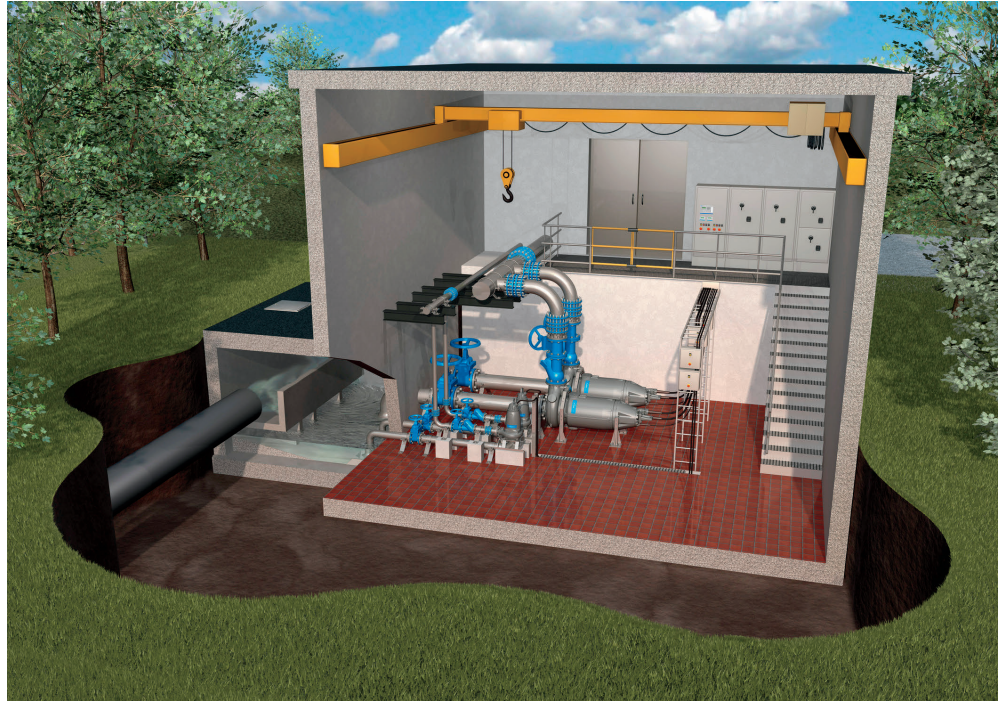


E-30-00887-17, strana – page 1 (2)  
Strojirenský zkušební ústav, s.p., Hudcova 56b, 621 00 Brno, Česká republika  
Engineering Test Institute, public enterprise, Hudcova 56b, 621 00 Brno, Czech Republic  
[www.szutest.cz](http://www.szutest.cz)



# Design

Xylem offers the most suitable pump station designs according to the needs by capitalizing on its broad engineering knowledge.



# Domestic productions

Xylem uses mechanical equipment of its own production in the Xylem GRP packaged pump station, as well as in new reinforced concrete pump stations and in the station retrofit projects. Such equipment has a wide range of options such as basket screen, sliding (penstock) cover, collector and line productions and coarse screen.



# Accessories, control and monitoring systems

Xylem uses control panels of its own production and the Flygt level measurement devices, RTU control systems, flow meters and Scada systems in the Xylem GRP packaged pump station, new reinforced concrete pump stations and station retrofit projects.



Flygt Aqua View SCADA



Flygt Hydrostatic Level Sensors



MJK Electromagnetic Flowmeter



Float Switch-ENM10



Flygt Pump Control Devices



Flygt Submersible Pumps





# Xylem |'zīləm|

- 1) The tissue in plants that brings water upward from the roots;
- 2) a leading global water technology company.

We're a global team unified in a common purpose: creating advanced technology solutions to the world's water challenges. Developing new technologies that will improve the way water is used, conserved, and re-used in the future is central to our work. Our products and services move, treat, analyze, monitor and return water to the environment, in public utility, industrial, residential and commercial building services settings. Xylem also provides a leading portfolio of smart metering, network technologies and advanced analytics solutions for water, electric and gas utilities. In more than 150 countries, we have strong, long-standing relationships with customers who know us for our powerful combination of leading product brands and applications expertise with a strong focus on developing comprehensive, sustainable solutions.

For more information on how Xylem can help you, go to [www.xylem.com](http://www.xylem.com)

## Xylem Türkiye

Ataşehir Genel Merkez  
Küçükbakkalköy Mah. Defne Sokak  
Büyükhanlı Plaza No:3 D:25, 34750  
Ataşehir – İstanbul, Türkiye  
Tel: (0262) 677 16 77  
[bilgi@xylem.com](mailto:bilgi@xylem.com)

Fabrika  
GOSB 1000 Caddesi No:1015, 41420  
Çayırova - Kocaeli, Türkiye  
Tel: (0262) 677 16 77

Ankara Ofis  
Mustafa Kemal Mah. Dumlupınar Blv.  
No:274-7 (Mahall Ankara İş Merkezi) B Blok  
Kat:4 No:43 06530 Çankaya Ankara  
Tel: (0312) 447 60 41

## Xylem UAE

Xylem Water Solutions Middle East Region FZCO  
Plot No. S20120 Street S211  
P.O. Box 262678  
Dubai, United Arab Emirates  
Tel.+ 971 4 806 1000  
Fax+ 971 4 880 6045  
[XME.Marketing@xylem.com](mailto:XME.Marketing@xylem.com)

## Xylem Saudi Arabia

Unit No 7874, Business Front Building No. N8  
9435 - King Khalid International Airport  
Riyadh 13413 - 3734  
Kingdom of Saudi Arabia  
Tel. +966 5009 78161  
[XME.Marketing@xylem.com](mailto:XME.Marketing@xylem.com)