



This document provides technical information relating to this specific Flojet model. General information, references and further resource locations are also included. VersiJet industrial pumps are designed to be durable and long-lasting, capable of satisfying pumping needs for a wide variety of applications. Typical pump uses are liquid transfer, spraying, cooling, circulation, filtration and dispensing.

### Features

- Heavy duty, coated motor
- Long life co-mold diaphragm
- Efficient, quiet operation
- Self-priming
- Runs dry without damage

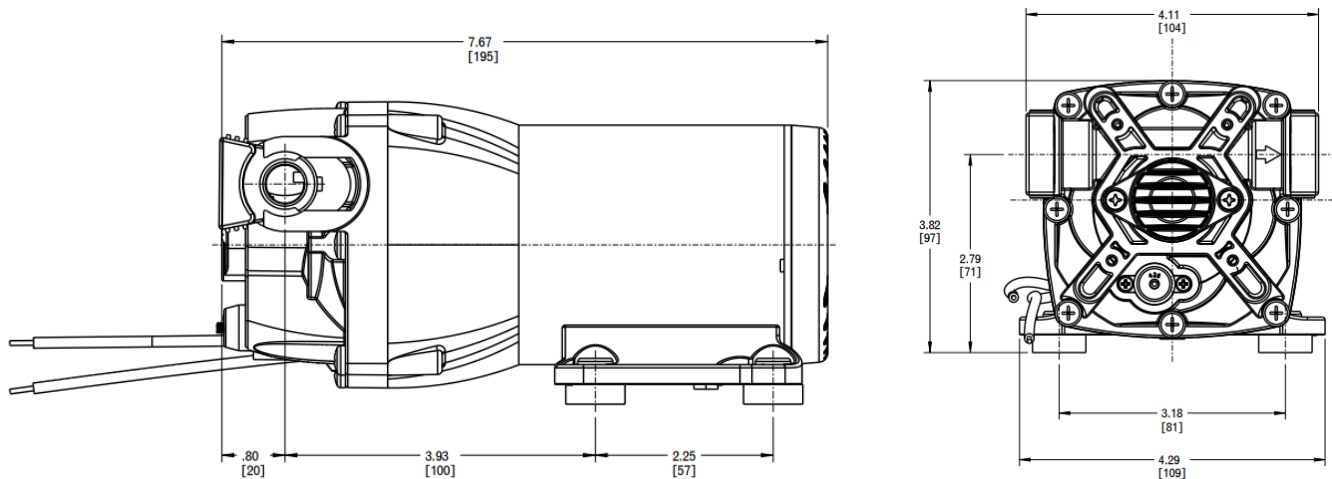
### Contents

|                   |   |
|-------------------|---|
| Pump unit:        | VersiJet 12V 3.5GPM S/V NSW BP<br>VersiJet 12V 13.2LPM S/V NSW BP |
| Port fittings:    | 2 x 1/2" (13mm) straight hosebarb                                 |
| Strainer:         | Not included  |
| IOM:              | Included (PN 81000480)  |
| Carton type:      | Plain box   |
| Master pack qty.: | 4   |

### Dimensional drawing

Inches [mm]

Notes: Additional envelope space required to allow port clips to extend, wires to bend, port fittings and hoses, etc.



## Specifications

### General

Part number: Q351F-16N7-2P  
Aftermarket replacement: Q351F-16N7-2P  
Replaces: Not Available  
Application: Industrial fluid transfer & spray  
Design: 4 chamber diaphragm  
Quick connect ports  
TENV permanent magnet motor  
Noise dampening baseplate  
Thermal motor protection (TCO)

### Materials (\*designates wetted path)

Upper housing\*: Glass-filled polypropylene  
Lower housing\*: Cast aluminum  
Check valve retainer\*: Polypropylene  
Diaphragm\*: Santoprene  
Check valves\*: Viton  
Switch diaphragm\*: Viton  
Bypass diaphragm\*: Viton  
PH seals\*: Viton  
PH fasteners: Stainless steel  
Baseplate: Nylon with rubber feet  
Motor casing: Case aluminum; coated steel

### Hydraulic performance (at nominal voltage)

Open flowrate: 3.5 GPM open flow (13.2 LPM)  
Pressure switch cut-off: No Switch  
Max operating pressure: 50 PSI (4.1 BAR)  
Max inlet pressure: 30 PSI (2.2 BAR)  
Internal bypass: Yes  
Fluid temperature range: 32°F - 140°F (0°C - 60°C)  
  
Self-priming capability: Up to 8ft (2.4m) dry prime  
Run-dry capable: Yes

### Electrical performance (at nominal voltage)

Nominal voltage: 12 VAC  
  
Voltage range: 9 VDC – 13.6 VDC  
Max current draw: 9.5 Amps @ 50 PSI (3.4 BAR)  
Fuse size: 15 Amps (not included)  
Duty cycle: Intermittent (See heat-rise chart)  
Leads: 12" (305mm), 14 AWG (2.5mm<sup>2</sup>)  
  
Wire connection: Stripped wire

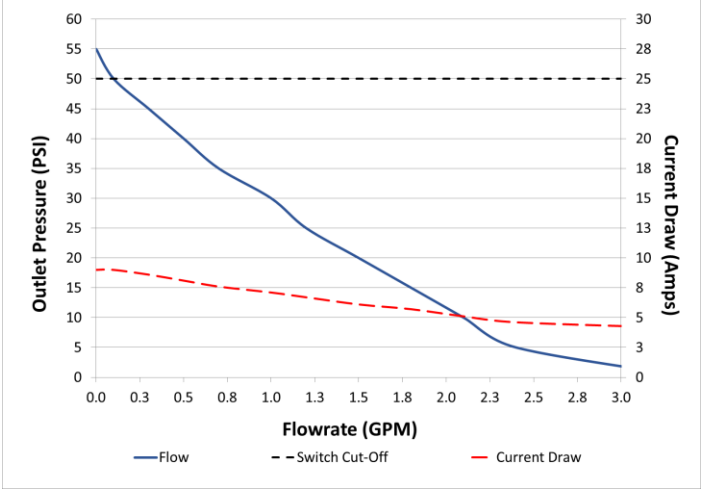
### Compliance

CE: Yes  
UR: No  
RCM: Yes  
UKCA: Yes  
  
WEEE: Yes  
Country of Origin: China  
HTS Code: 8413.50.0050

### Other information

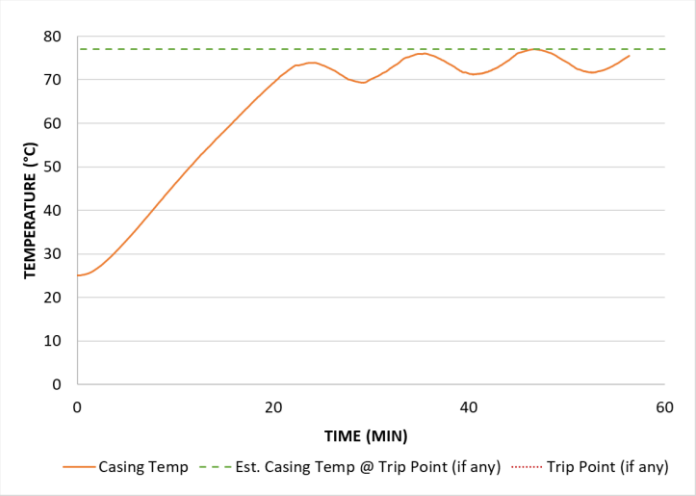
Other Information: Industrial  
Ambient temp range: 32°F - 140°F (0°C - 60°C)  
IP rating: IPX6  
Carton dimensions: 11.25x5.47x5.07" (286x139x129mm)  
Master pack dimensions: 12x12x11.5" (305x305x292mm)  
Weight (pump only): 5.2 lbs (2.4 kg)  
UPC code: 705474224036

Flow curve



Representative curve of unit operated at nominal voltage. Performance will vary somewhat unit to unit. This model does not have a pressure switch and must be turned off manually. Do not exceed 50PSI (3.4 BAR). Flow rate at zero pressure represents Open Bucket.

Temperature rise

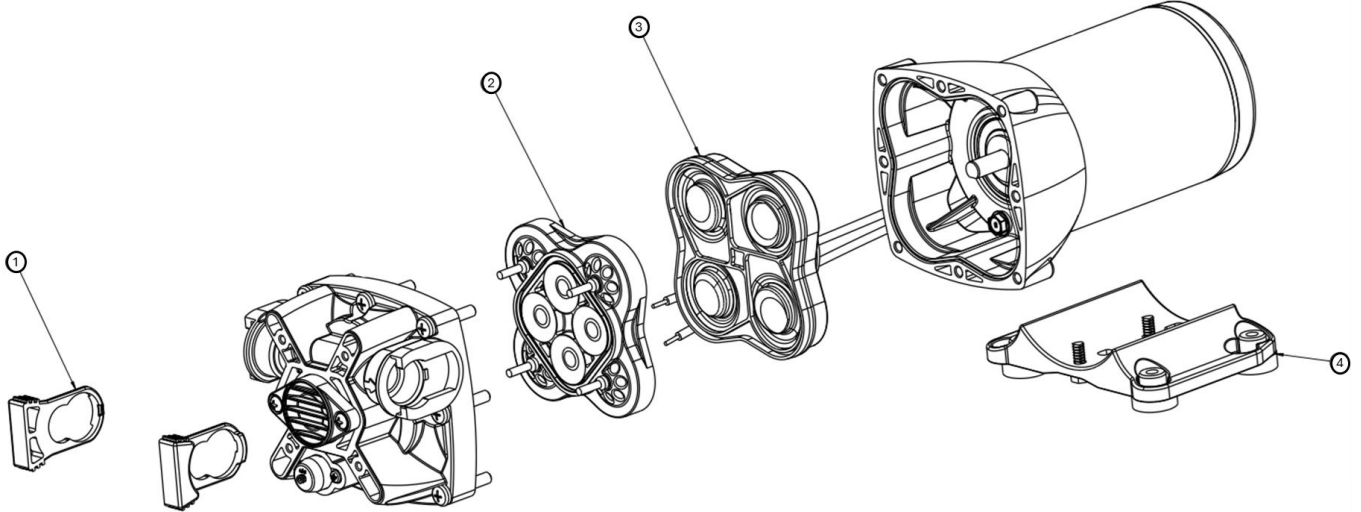


Tested @ elevated ambient temp of 70°F (21°C) @ max run pressure. Est. Casing Temp @ Trip Point may vary (+/-10°C). If there is a concern about the ability of the pump to run continuously for long periods of time, then in-application testing is highly recommended.

Pump service kits & spares

| Item                        | Description   |
|-----------------------------|---|
| 1. Port clips               | 2 port clips per kit  |
| 2. Check valve assembly     | Check valve housing with suction and discharge check valves installed |
| 3. Diaphragm/drive assembly | Wobble plate/diaphragm assembly                                       |
| 4. Baseplate/mounting feet  | Baseplate w/rubber mounting feet installed                            |

Exploded view



### Available Flojet industrial options

In addition to the unit described in this datasheet Flojet also offers the following configurations (will vary somewhat by region and model type) and options:

|                       |  |
|-----------------------|--|
| Voltages:             | 12, 24, & 36 VDC 115 & 230 VAC   |
| Flowrate range:       | 1 - 6 GPM (3.8 - 22.7 LPM)   |
| Switch setting range: | 25 - 150 PSI (1.7 - 10.3 Bar)  |
| Pump configurations:  | <ul style="list-style-type: none"><li>• Switch; Bypass; Switch &amp; Bypass; Switch, No Bypass; No Switch, No bypass</li><li>• EP/PP and other blended diaphragm materials</li><li>• EPDM, FKM, and other valve/seal materials</li><li>• Some models available with transducers or vacuum switches</li><li>• Various customer options dependent on volumes</li></ul> |

### Installation & operation

For guidance on proper installation and operation of this pump, as well as for any warnings or cautions involving use, please consult the appropriate IOM for the pump. Printed IOMs are supplied with the pumps and are also available online.

### Resources & contact information

|           |                                    |                   |  |
|-----------|------------------------------------|-------------------|--|
| IOM:      | On website; hard copies with pumps | Customer service: | Refer to contact info at our website                           |
| Warranty: | Information included in IOM        | Website:          | <a href="http://www.xylem.com/flojet">www.xylem.com/flojet</a> |

Note: Specifications provided for guidance only. We reserve the right to change specifications without prior notice.