

Cast Iron Receivers: for years of dependable service; warranted for 20 years from date of shipment against failure due to corrosion.

Centrifugal Pumps: provide generous running clearances. Standard 3500 RPM for best hydraulic efficiencies, optional 1750.

Float Switches: Double pole heavy duty, externally adjustable.

Maximum Condensate Temperature: 200°F (93°C)
209°F (98°C) available at certain points

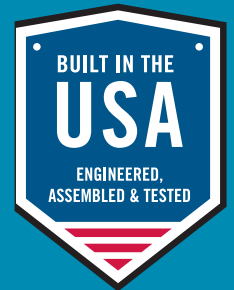


OPTIONAL EQUIPMENT INCLUDES:

- Factory Mounted Control Panels
- Water Level Gauge
- Dial Thermometer
- Inlet Basket Strainers
- Suction Butterfly Valves (Available on pump with capacities to 115 gpm [435 L/M])
- 3 Types of Alternation
- Discharge Pressure Gauges
- High Level Alarm

Domestic[®] Pump Series CC[™] Condensate Units

SIMPLEX OR DUPLEX 1,000 THRU 150,000 SQ. FT. EDR
250 THRU 37,500 LB./HR.



SYSTEM CAPACITY†	PUMP CAPACITY GPM (L/M)	DISCHARGE PRESSURE PSIG (kPa)	MOTOR HORSEPOWER		DISCHARGE SIZE IN. (mm)	SERIES CC™ CONDENSATE UNITS		
			3500 RPM	1750 RPM		MODEL NUMBER	RECEIVER CAPACITY GAL. (L)	INLET SIZE IN. (mm)
1,000 thru 6,000 Sq. Ft. EDR 250 thru 1,500 lb./hr. (113-680 kg/hr)	6 (23)	15* (103) 20* (138) 25* (172) 30* (207) 40 (276) 50 (345) 60 (414) 75 (518) 90 (621)	1/3 1/3 1/2 1/2 1 1 1/2 2 3 3	1/3 1/2 3/4 1 1/2 ** ** ** ** **	3/4 (19)	61.5CC 62CC 62.5CC 63CC 64CC 65CC 66CC 67.5CC 69CC	6 (23) Simplex 14†† (53) Duplex 23 (87)	2 (51)
1,000 thru 9,000 Sq. Ft. EDR 250 thru 2,250 lb./hr. (113-1,021 kg/hr)	9 (34)	15* (103) 20* (138) 25* (172) 30* (207) 40 (276) 50 (345) 60 (414) 75 (518) 90 (621)	1/3 1/3 1/2 3/4 1 1 1/2 2 3 3	1/3 1/2 3/4 1 1/2 ** ** ** ** **	3/4 (19)	91.5CC 92CC 92.5CC 93CC 94CC 95CC 96CC 97.5CC 99CC	9 (34) Simplex 14†† (53) Duplex 23 (87)	2 (51)
12,000 Sq. Ft. EDR 3,000 lb./hr. (1,361 kg/hr)	12 (45)	15* (103) 20* (138) 25* (172) 30* (207) 40 (276) 50 (345) 60 (414) 75 (518) 90 (621)	1/3 1/3 1/2 3/4 1 1 1/2 2 3 5	1/3 1/2 3/4 1 1/2 ** ** ** ** **	3/4 (19)	121.5CC 122CC 122.5CC 123CC 124CC 125CC 126CC 127.5CC 129CC	14†† (53) 23 (87)	2 (51)
15,000 Sq. Ft. EDR 3,750 lb./hr. (1,701 kg/hr)	15 (57)	15* (103) 20* (138) 25* (172) 30* (207) 40 (276) 50 (345) 60 (414) 75 (518) 90 (621)	1/3 1/3 1/2 3/4 1 1 1/2 2 3 5	1/2 3/4 1 1 1/2 ** ** ** ** **	3/4 (19)	151.5CC 152CC 152.5CC 153CC 154CC 155CC 156CC 157.5CC 159CC	14†† (53) 23 (87)	2 (51)
22,000 Sq. Ft. EDR 5,500 lb./hr. (2,495 kg/hr)	22 (83)	15* (103) 20* (138) 25* (172) 30* (207) 40 (276) 50 (345) 60 (414) 75 (518) 90 (621)	1/3 1/2 3/4 3/4 1 1/2 2 3 3 5	1/2 3/4 1 1 1/2 ** ** ** ** **	1 1/2 (38)	221.5CC 222CC 222.5CC 223CC 224CC 225CC 226CC 227.5CC 229CC	23 (87)	2 (51)
30,000 Sq. Ft. EDR 7,500 lb./hr. (3,402 kg/hr)	30 (114)	15 (103) 20 (138) 25 (172) 30 (207) 40 (276) 50 (345) 60 (414) 75 (518) 90 (621)	1/2 3/4 3/4 1 1 1/2 2 3 5 5	3/4 3/4 1 1/2 1 1/2 ** ** ** ** **	1 1/2 (38)	301.5CC 302CC 302.5CC 303CC 304CC 305CC 306CC 307.5CC 309CC	36 (136)	3 (76)
37,000 Sq. Ft. EDR 9,250 lb./hr. (4,196 kg/hr)	37 (140)	15 (103) 20 (138) 25 (172) 30 (207) 40 (276) 50 (345) 60 (414) 75 (518) 90 (621)	1/2 3/4 3/4 1 1/2 2 3 3 5 5	3/4 1 1 1/2 1 1/2 ** ** ** ** **	1 1/2 (38)	371.5CC 372CC 372.5CC 373CC 374CC 375CC 376CC 377.5CC 379CC	36 (136)	3 (76)
45,000 Sq. Ft. EDR 11,250 lb./hr. (5,103 kg/hr)	45 (170)	15 (103) 20 (138) 25 (172) 30 (207) 40 (276) 50 (345) 60 (414) 75 (518) 90 (621)	3/4 1 1 1 1/2 2 3 3 5 5	3/4 1 1 1/2 2 ** ** ** ** **	1 1/2 (38)	451.5CC 452CC 452.5CC 453CC 454CC 455CC 456CC 457.5CC 459CC	36 (136)	3 (76)

† Sq. Ft. EDR / 4 = Lb./hr. Condensate

* Maximum Condensate Temperature: 209°F (98°C) 3500 RPM ONLY.

** 3500 RPM is standard. 1750 RPM is not available.

†† 3500 RPM units to 50 psi discharge pressure use "B" design receiver as standard.

3500 RPM units 60 psi or more use "A" design receiver. 1750 RPM units use "A" design receiver.

SYSTEM CAPACITY†	PUMP CAPACITY GPM (L/M)	DISCHARGE PRESSURE PSIG (kPa)	MOTOR HORSEPOWER		DISCHARGE SIZE IN. (mm)	SERIES CC™ CONDENSATE UNITS		
			3500 RPM	1750 RPM		MODEL NUMBER	RECEIVER CAPACITY GAL. (L)	INLET SIZE IN. (mm)
60,000 Sq. Ft. EDR 15,000 lb./hr. (6,804 kg/hr)	60 (227)	15 (103) 20 (138) 25 (172) 30 (207) 40 (276) 50 (345) 60 (414) 75 (518) 90 (621)	1 1 1/2 1 1/2 2 3 3 5 5 7 1/2	1 1 1/2 1 1/2 2 ** ** ** ** **	2 (51)	601.5CC 602CC 602.5CC 603CC 604CC 605CC 606CC 607.5CC 609CC	52 (197)	3 (76)
75,000 Sq. Ft. EDR 18,750 lb./hr. (8,505 kg/hr)	75 (284)	15 (103) 20 (138) 25 (172) 30 (207) 40 (276) 50 (345) 60 (414) 75 (518) 90 (621)	1 1/2 1 1/2 2 2 3 3 5 5 7 1/2 7 1/2	1 1/2 1 1/2 2 3 ** ** ** ** ** **	2 (51)	751.5CC 752CC 752.5CC 753CC 754CC 755CC 756CC 757.5CC 759CC	75 (284)	4 (102)
90,000 Sq. Ft. EDR 24,250 lb./hr. (11,000 kg/hr)	90 (341)	15 (103) 20 (138) 25 (172) 30 (207) 40 (276) 50 (345) 60 (414) 75 (518)	1 1/2 2 2 3 3 5 5 7 1/2 7 1/2	1 1/2 2 2 3 ** ** ** ** **	2 (51)	901.5CC 902CC 902.5CC 903CC 904CC 905CC 906CC 907.5CC	75 (284)	4 (102)
112,000 Sq. Ft. EDR 28,000 lb./hr. (12,701 kg/hr)	112 (424)	15 (103) 20 (138) 25 (172) 30 (207) 40 (276) 50 (345) 60 (414) 75 (518)	1 1/2 2 3 3 3 5 5 7 1/2 10	2 2 3 3 ** ** ** ** **	2 (51)	1121.5CC 1122CC 1122.5CC 1123CC 1124CC 1125CC 1126CC 1127.5CC	120 (454)	4 (102)
150,000 Sq. Ft. EDR 37,500 lb./hr. (17,010 kg/hr)	150 (568)	15 (103) 20 (138) 25 (172) 30 (207) 40 (276) 50 (345) 60 (414) 75 (518)	3 3 5 5 7 1/2 7 1/2 10 15	2 3 5 5 ** ** ** **	2 (51) for 3500 RPM units 3 (76) for 1750 RPM units	1501.5CC 1502CC 1502.5CC 1503CC 1504CC 1505CC 1506CC 1507.5CC	120 (454)	4 (102)

† Sq. Ft. EDR / 4 = Lb./hr. Condensate

**3500 RPM is standard. 1750 RPM is not available.

STANDARD UNIT FEATURES:

- Cast Iron Receiver, sizes 14 gallon (53L) and larger have provision for second pump. Receiver sized for 1 minute net storage.
- Cast Iron Receivers are warranted for 20 years from date of shipment against failure due to corrosion.
- Centrifugal Pump(s) with drip-proof motors. Pump capacity sized 2 times system return rate.
- Float switch(es).

ORDERING INSTRUCTIONS:

Specify basic Model No., RPM, single or duplex, phase, operating voltage, special features. Note: TEFC motors are available. A horsepower increase is not necessary using TEFC motors.

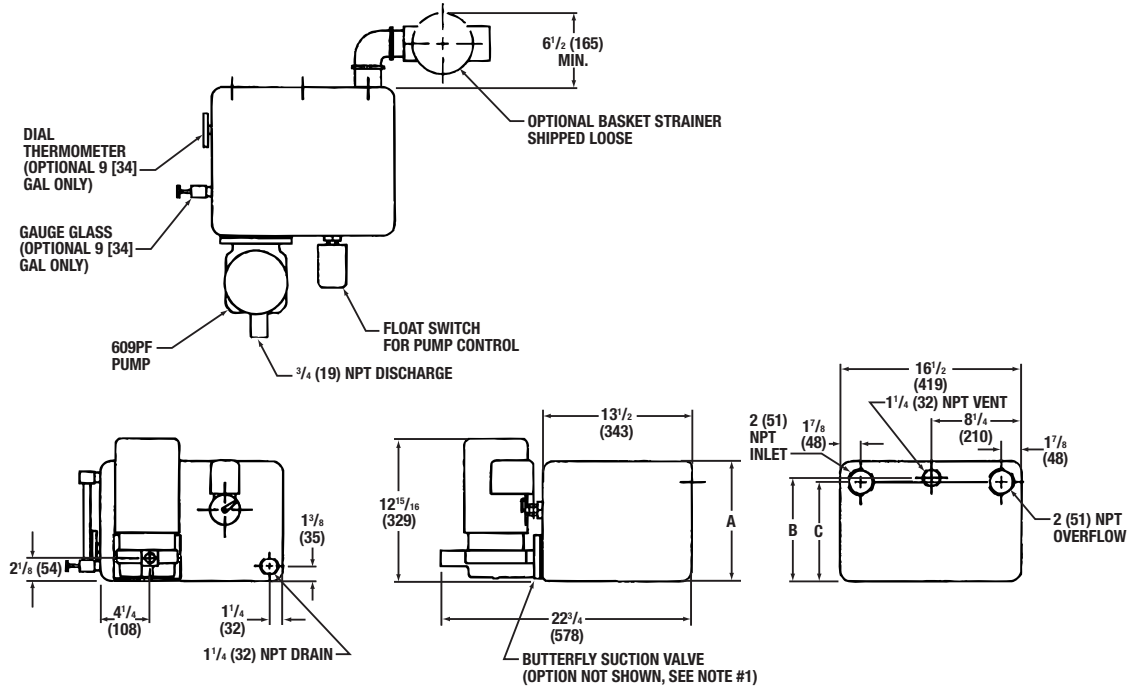
OPTIONAL FEATURES AVAILABLE AS SPECIFIED:

- Water level gauge w/shut-off valve*
- Dial Thermometer*
- Inlet Basket Strainer
- Discharge Pressure Gauges

- NEMA 4 Float Switches
- Mechanical Alternator provides sequencing of duplex pumps and standby of second pump on high level. (NEMA 4 mechanical alternators available on receiver sizes 36 gallons [136L] and larger)
- Control Panels, see page 4. (Control Panels cannot be mounted on 6 & 9 gallon [23 & 34L] receivers, use 14 gallon [53L] minimum)
- Suction Butterfly Valve
3" (76mm) (Available for pump capacities to 75 gpm [284L/M])
- Suction Butterfly Valve
3 1/2" (89mm) (Available for pump capacities to 76 to 115 gpm [288 to 435L/M])
- TEFC Motors
- High Level Float Switch/Standby Float Switch (Consult factory for arrangement)
- Lifting Eyes (Available on Receiver sizes 23 gallon [87L] and larger)
- Tapping/openings not drilled on 9 or 14 gallon (34 or 53L) unless option is specified.

*Not available on 6 gallon (23L) receivers.

**6 & 9 GALLON RECEIVER WITH 609PF PUMP
2DCC25**

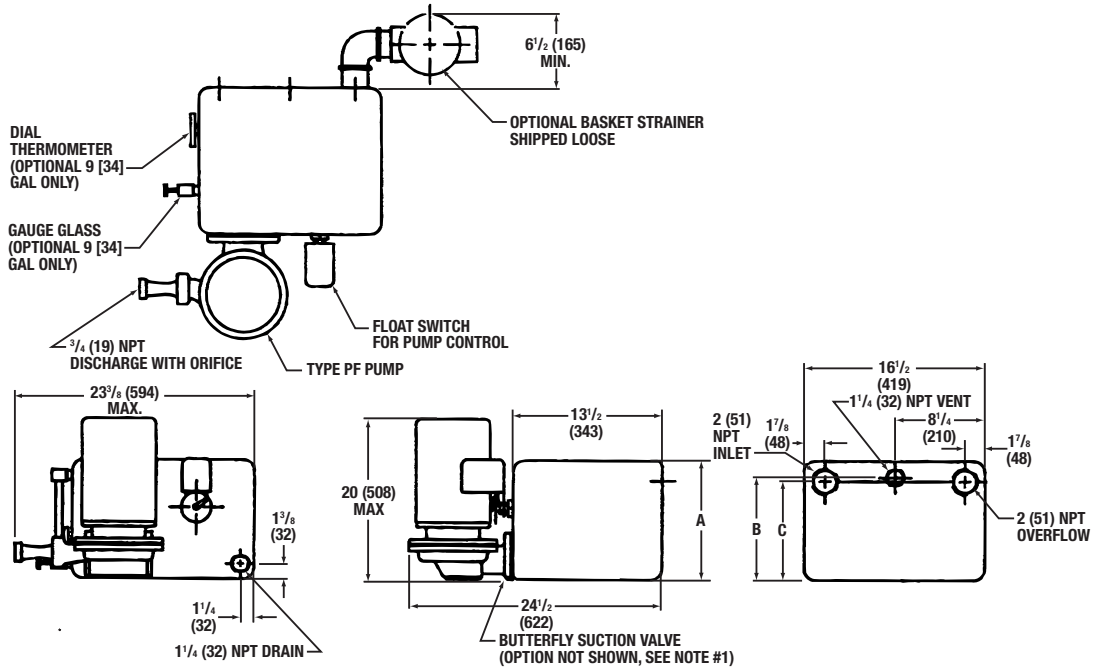


GAL. (L)	DIMENSIONS IN INCHES (mm)		
	A	B	C
6 (23)	8 ⁹ / ₁₆ (217)	7 ¹ / ₁₆ (179)	6 ¹¹ / ₁₆ (170)
9 (34)	10 ⁷ / ₈ (276)	9 ³ / ₈ (238)	9 (229)

Note:

1. For optional Butterfly Suction Valve, add 2" (51mm) to 22³/₄" (578mm) dimension.
2. Optional Discharge Pressure Gauges (not shown) shipped loose.

**6 & 9 GALLON RECEIVER WITH ALL OTHER PF PUMPS (EXCEPT 609PF)
2DCC26**

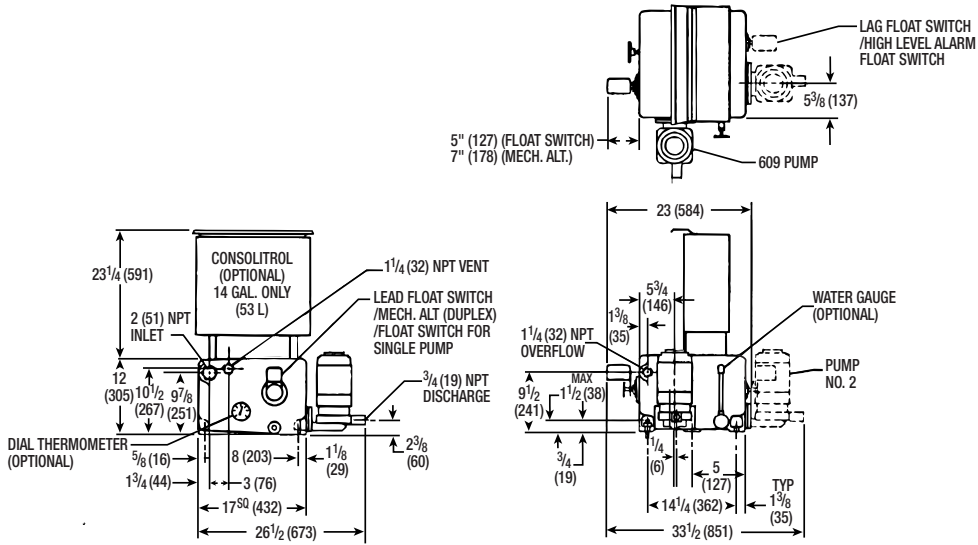


GAL. (L)	DIMENSIONS IN INCHES (mm)		
	A	B	C
6 (23)	8 ⁹ / ₁₆ (217)	7 ¹ / ₁₆ (179)	6 ¹¹ / ₁₆ (170)
9 (34)	10 ⁷ / ₈ (276)	9 ³ / ₈ (238)	9 (229)

Note:

1. For optional Butterfly Suction Valve, add 2" (51mm) to 22³/₄" (578mm) dimension.
2. Optional Discharge Pressure Gauges (not shown) shipped loose.

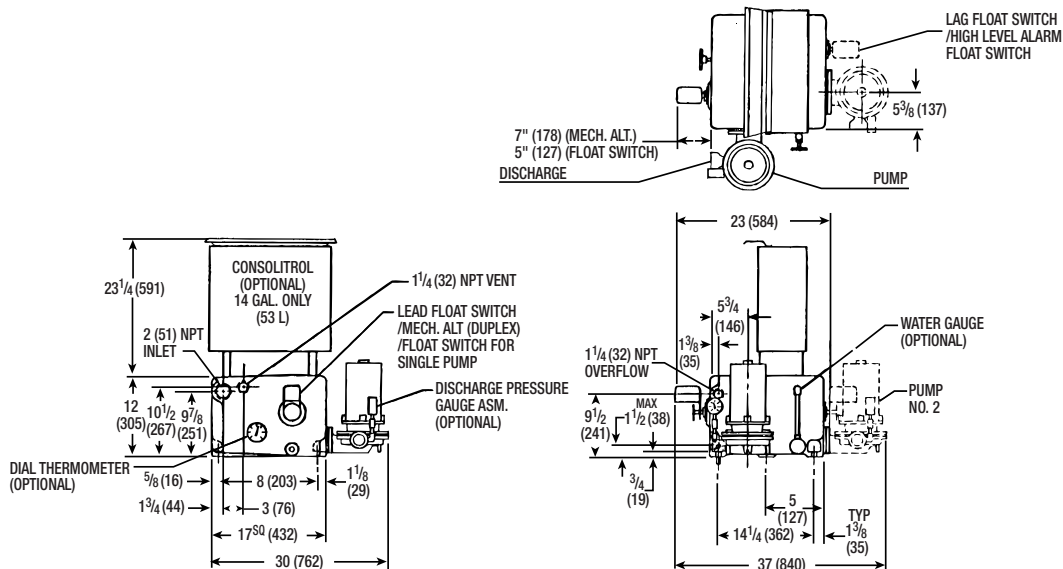
**14 GALLON "A" DESIGN RECEIVER (PUMPS ON DIFFERENT SIDES) WITH 609PF PUMP
2DCC11**



Note:

1. Optional equipment furnished at extra cost when ordered.
2. Optional Discharge Pressure Gauge ASM and Inlet Basket Strainer shipped loose.
3. Optional Butterfly Valve requires the addition of 2" (51mm) to G (duplex) and H dimensions.
4. Pump discharge varies with pump specification.

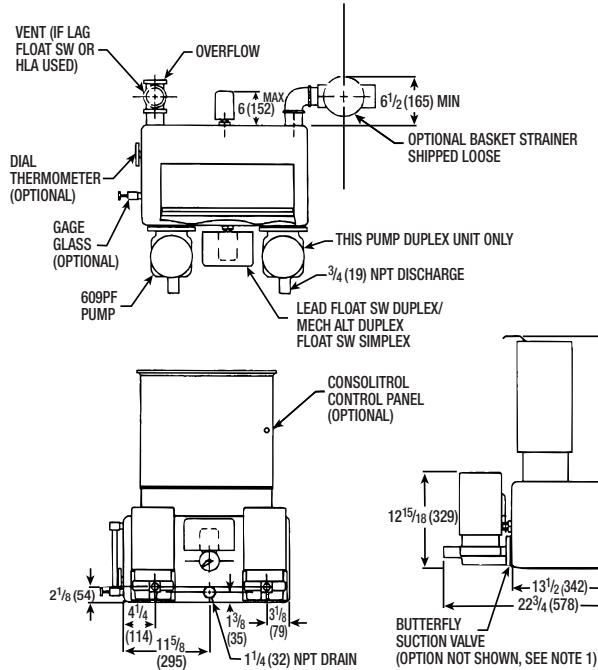
**14 GALLON "A" DESIGN RECEIVER (PUMPS ON DIFFERENT SIDES)
WITH ALL OTHER PF PUMPS (EXCEPT 609PF). STANDARD FOR ALL 1750 RPM.
STANDARD FOR 3500 RPM UNITS 60PSI OR HIGHER DISCHARGE PRESSURE
2DCC12**



Note:

1. Optional equipment furnished at extra cost when ordered.
2. Optional Inlet Basket Strainer shipped loose.
3. Optional Butterfly Valve requires the addition of 2" (51mm) to G (duplex) and H dimensions.
4. Pump discharge varies with pump specification.

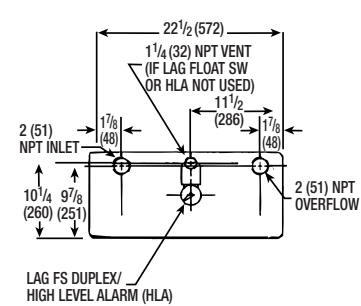
**14 GALLON "B" DESIGN RECEIVER (PUMPS ON SAME SIDE) WITH 609PF PUMP
2DCC27**



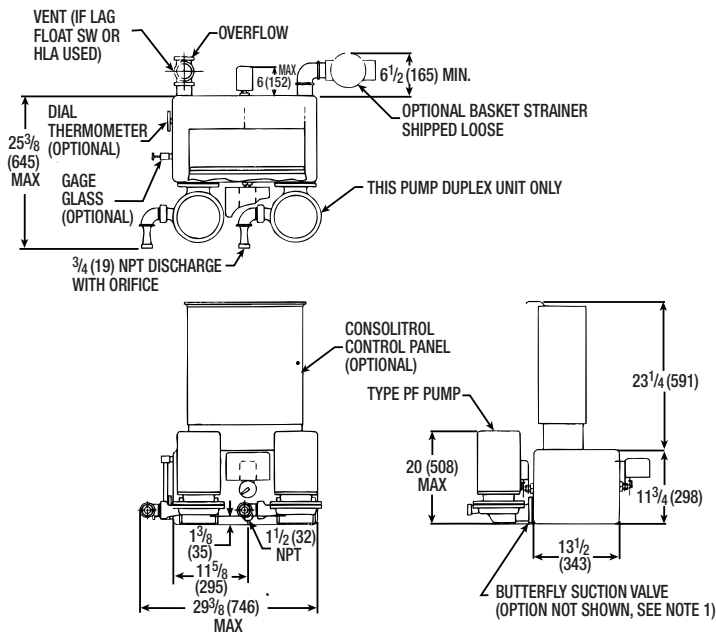
ALL DIMENSIONS IN INCHES (mm)

Note:

1. For optional Butterfly Suction Valve, add 2" (51mm) to 22³/₄" (578mm) dimension.
2. Optional Discharge Pressure Gauges (not shown) shipped loose.



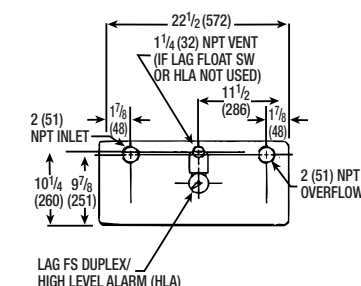
**14 GALLON "B" DESIGN RECEIVER (PUMPS ON SAME SIDE) WITH ALL OTHER
PF PUMPS (EXCEPT 609PF). STANDARD FOR 3500 RPM UP TO 50 PSI DISCHARGE PRESSURE
2DCC28**



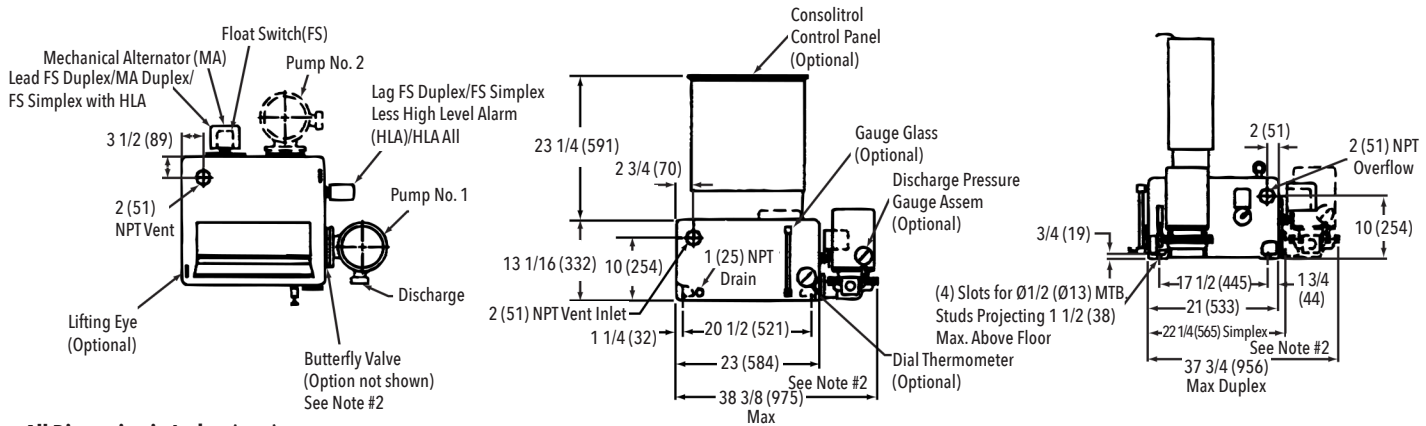
ALL DIMENSIONS IN INCHES (mm)

Note:

1. For optional Butterfly Suction Valve, add 2" (51mm) to 24¹/₂" (622mm) dimension.
2. Optional Discharge Pressure Gauge(s) (not shown) shipped loose.



23 GALLON 2DCC13



All Dimension in Inches (mm)

Note:

1. Optional Inlet Basket Strainer shipped loose.
2. Optional Butterfly Valve(s) requires the addition of 2" (51 mm) to overall dimension.

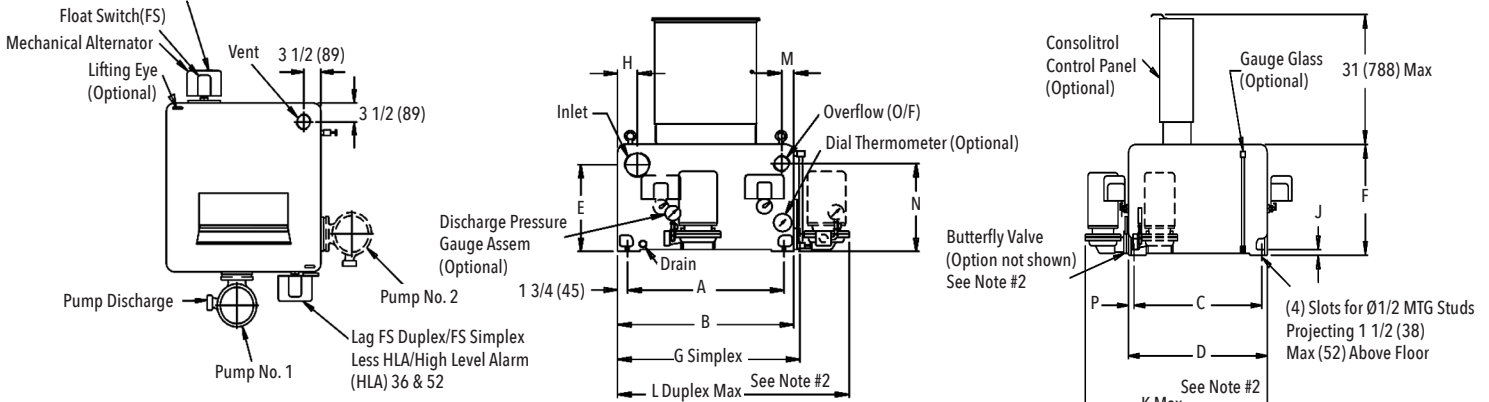
Receiver Capacity:

1. Gross 23 Gallons (87 L)
2. Net 16 Gallons (61 L)

36-52 GALLON 5DCC14

Lead FS Duplex/MA for 36,52 Duplex/FS Simplex with HLA

Rec. Cap		Vent & O/F	Inlet	A	B	C	D	E	F	G	H	J	K Max	L Max	M	N	P	Drain
Gross	Net																	
36	25	2	3	21 1/4	24 3/4	21 1/2	24	13	15 13/16	26 5/16	2 1/2	3/4	38	37	1 15/16	12 1/2	1 1/4	1
52	33	2	3	24 1/4	27 3/4	25 1/4	27 3/4	14	16 13/16	29 5/16	2 7/8	1	41	40 3/4	1 15/16	13 1/2	1 1/4	1

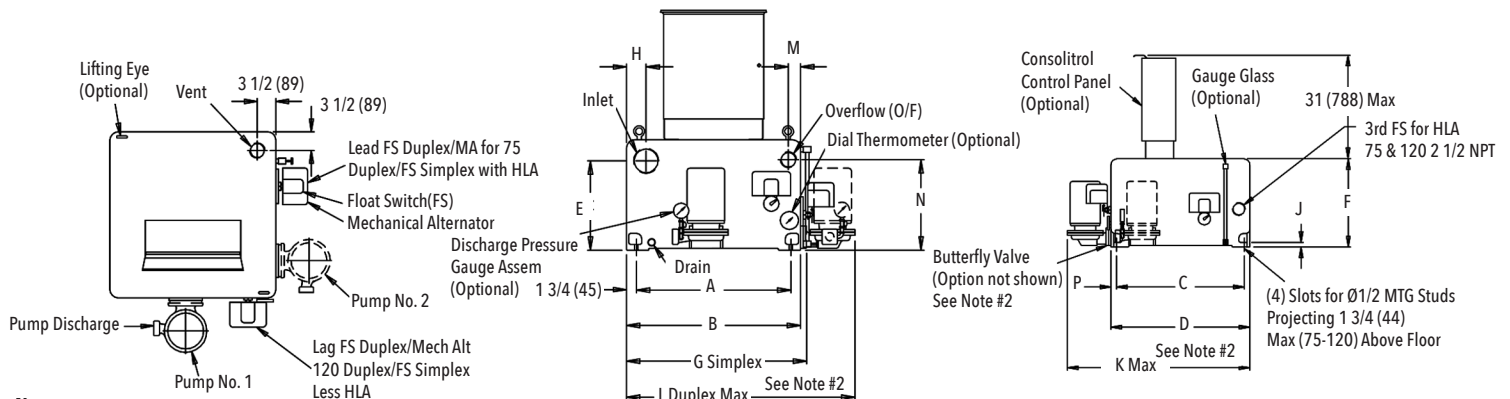


Note:

1. Optional Inlet Basket Strainer shipped loose.
2. Optional Butterfly Valve(s) requires the addition to the overall dimension as follow: 2" for 0-75 GPM and 5" for 76-115 GPM.
3. All openings are NPT.

75-120 GALLON 2DCC14

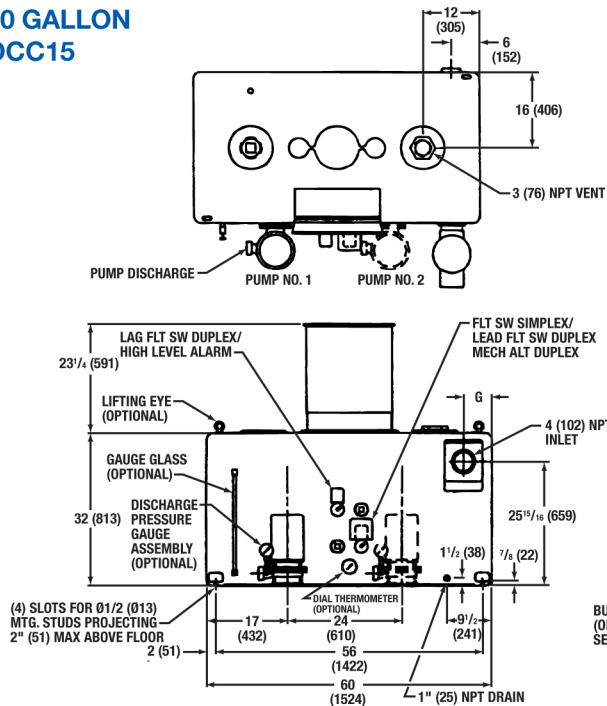
Rec. Cap		Vent & O/F	Inlet	A	B	C	D	E	F	G	H	J	K Max	L Max	M	N	P	Drain
Gross	Net																	
75	48	2 1/2	4	27 3/4	31 1/4	28 3/4	31 1/4	16	19 13/16	32 13/16	3 1/2	1	44 1/2	44 1/2	2 3/16	15 7/32	1 1/4	1
120	91	2 1/2	4	36 1/4	39 3/4	30 3/4	32 3/4	20	24	41 3/16	4	1	48 3/8	55 3/8	2 1/2	19 7/32	1	2 1/2



Note:

1. Optional Inlet Basket Strainer shipped loose.
2. Optional Butterfly Valve(s) requires the addition to the overall dimension as follow: 2" for 0-75 GPM and 5" for 76-115 GPM.
3. All openings are NPT.

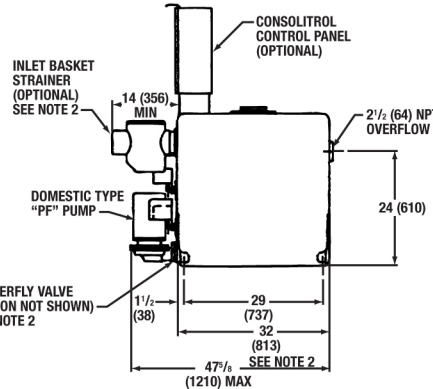
250 GALLON 2DCC15



ALL DIMENSIONS IN INCHES (mm)

Note:

1. Optional Basket Strainer shipped loose.
2. Optional Butterfly Valve(s) requires addition to the overall dimension as follows:
2" for 0-75 GPM (51mm for 0-284/l/m)
5" for 76-115 GPM (127mm for 288-435/l/m)



OPTIONAL ELECTRIC CONTROLS

Description of Optional Panel Components

- Magnetic Starters must be used on all 3 phase motors and single phase motors over 2 HP.
- Disconnect Switches and Circuit Breakers. Either fuses or a circuit breaker is required ahead of the starters to protect against short circuits. A disconnect switch or circuit breaker also provides a means of shutting off power for service.
- Control Power Switching Relay – should be supplied in Duplex or Triplex units when individual pump disconnect switches are specified. This relay is recommended in order to maintain control power to the water makeup system in the event pump #1 disconnect switch is turned off or pump #1 fails. In this event the control power will be automatically supplied by pump #2.

- Selector Switches – “Auto-Off-Hand” selector switches provide a means of shutting off pumps and a means of testing in the “Hands” position. “Off-Hand-Lead-Lag” selector switches may be furnished on duplex units with 2 float switches to provide manual alteration.
- Electric Alternator may be furnished on duplex units to provide automatic sequencing of lead pump. Use only when magnetic starters are provided and only with 2 float switches.
- Transformer is required by the National Electrical Code to reduce control voltage when power supply exceeds 250 volts. A transformer is recommended when voltage exceeds 130 volts. Refer to local codes for requirements.
- Pilot Lights – Pump running pilot lights are available to indicate pump operation.
- Audible Alarm – An alarm to indicate low or high water level may be furnished. A separate tank mounted level switch should be provided with an alarm.

Specified Panel Components to be furnished with unit at extra cost.

Standard panels are supplied with NEMA 2 enclosures and are U.L. listed unless otherwise specified.

Instruction manuals, specifications and parts lists can be found on our website www.bellgossett.com

We value your feedback. Please take our 3 question survey at bellgossett.com/survey to let us know how we are doing.



Xylem Inc.
8200 N. Austin Avenue
Morton Grove, Illinois 60053
Phone: (847) 966-3700
Fax: (847) 965-8379
www.xylem.com/bellgossett

Bell & Gossett is a trademark of Xylem Inc. or one of its subsidiaries.
© 2019 Xylem Inc. S-215J June 2019