



TECHNOFORCE™ e-MTX

PACKAGE BOOSTER SYSTEMS



Bell & Gossett
a xylem brand

D-eMTX611A

TECHNOFORCE e-MTX

Package Booster Systems

The TECHNOFORCE e-MTX Package Booster Systems deliver an entire NSF/ANSI 61 Annex G Listed pump system that is designed and built in Auburn, New York. The e-MTX can be configured with up to eight pumps, allowing lead/lag alternation. Rely on the TECHNOFORCE e-MTX Package Booster Systems to provide a single source for performance and reliability needed to deliver water at the heights required.

Features & Benefits

Exceptional System Performance:

- Constructed of up to 8 Xylem pumps capable of delivering water to the required heights
- Back-up Generator Mode connects to the building's generator to ensure reliability during a power failure
- Each pre-programmed station is fully tested for flow and pressure up to 300 PSI boost for trusted performance (Consult the factory for up to 580 PSI boost)

Ease of Use:

- BacNet communication saves time by providing system performance data remotely
- 10" LED color touchscreen interface provides for smoother navigation of the system and unmatched data displayed
- Stainless steel grooved manifolds and optional flanges simplify installation

Enhanced System Protections:

Each e-MTX is designed with the following protections to help keep the system running

- Loss of prime
- Low suction prime
- Low inlet pressure
- System performance alarms
- Thermal purge (standard default)
- Surge arrestors
- Suction pressure transducer (standard default)
- Redundant pressure transducer

Additional Features:

- 2-8 pump configuration
- Up to 2100 gpm (4 pump) 4200 gpm (8 pump)*
- Up to 1100 feet of head and 500 PSI boost*
- Up to 575V Premium Efficient Motors
- 50Hz available as Engineered to Order
- 304 SS Grooved Manifolds
- UL Type 1 and 12 Control Panel Standard (4 and 4X ETO)
- Trending Screen
- No Flow Shutdown
- Dynamic Flow Loss Compensation
- BACnet MSTP or IP; Modbus Serial or TCP

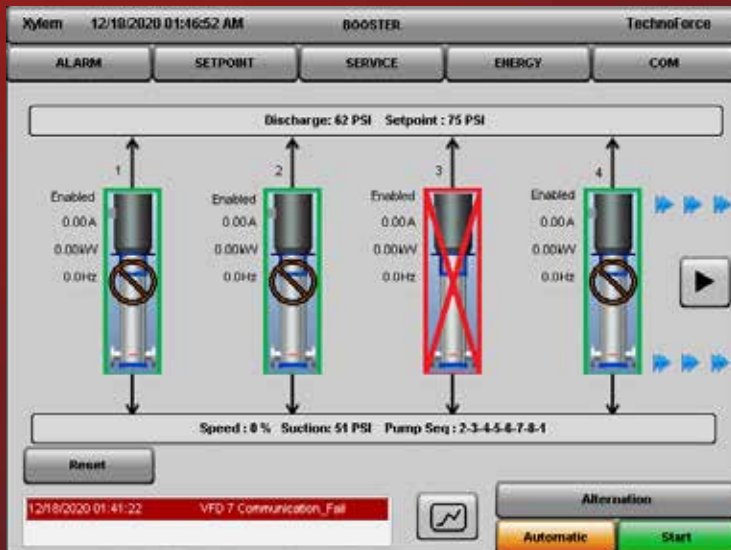
*Performance based on e-SV vertical multi-stage pumps



Features that make a difference

1. e-MTX Pump Logic Controller with NEMA 1 or 4 enclosure (4X available ETO) - The 10" LED color touchscreen interface provides unmatched data displayed on a single intuitive screen, including a trending log that covers power, pressure, set point, speed and flow.
2. Main disconnect switch allows for ease of serviceability
3. Technologic NEMA 1 or 12 VFDs (4X available ETO) with individual fused disconnect switches permit continued operation and serviceability of pump and motor while maintaining partial or full flow.
4. Premium efficiency motors ensure DOE requirements are met (not shown)
5. Pump options of e-SV vertical multi-stage, NPE or e-SH end-suction pumps deliver the maximum performance needed (not shown)
6. 304 SS grooved manifolds allow for a quicker connection during installation (flanges optional)
7. A 2.5" pressure gauge allows for greater visibility
8. NSF-61 certified isolation valves aid in serviceability of a single pump
9. Silent type check valves quietly keep water flowing in the right direction

TechnoForce Home Screen



Stand-By

Running

Off

VFD Fail



Contact your local Bell & Gossett Representative for more information and system design <https://xylem.com/bellgossett>

Applications:

- High rise buildings
- Hospitals
- Industrial
- Office buildings
- Schools
- Sports arenas

Pump System Listing:

- NSF/ANSI 61 Annex G Listing
- UL/cUL Category QCZJ Package
- UL508A Control Panel Listing
- ASHRAE 90.1-2010 Compliant



We value your feedback. Please take our 3 question survey at bellgossett.com/survey to let us know how we are doing.



Xylem Product Cybersecurity

Xylem values your system security and the availability of your critical services. For more information on Xylem cybersecurity practices or to contact the cybersecurity team please visit xylem.com/security.

Xylem Inc.
2881 East Bayard Street Ext., Suite A
Seneca Falls, NY 13148
Phone: (844) XYL-PUMP [844-995-7867]
Fax: (888) 322-5877
www.xylem.com/bellgossett

Bell & Gossett is a trademark of Xylem Inc. or one of its subsidiaries.
© 2021 Xylem Inc. D-eMTX611A March 2021