



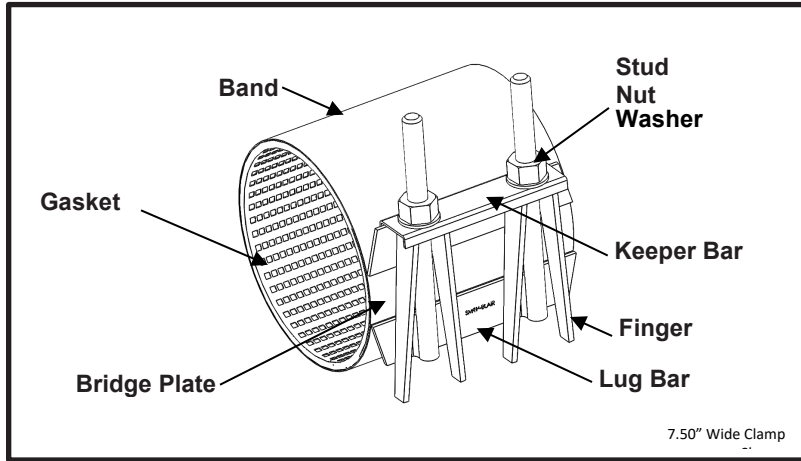
Smith-Blair  
a xylem brand

# SPECIFICATION

## WIDE RANGE FULL CIRCLE® REPAIR CLAMP

### ALL STAINLESS

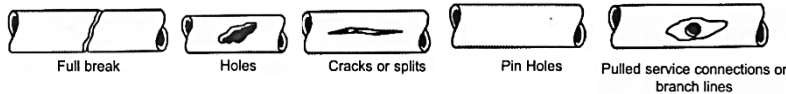
### MODEL 281



#### APPLICATIONS

##### Typical Uses

- Repair leaks due to complete breaks, splits, or holes
- Examples:



##### Standard Pipe Sizes

- 3" to 12" nominal

##### Standard Widths

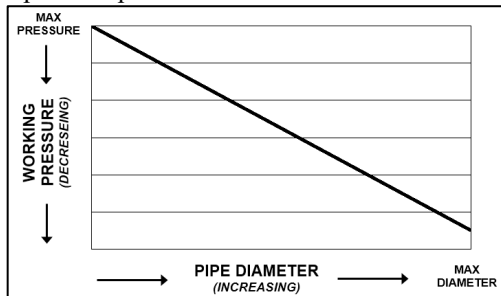
- 7.5", 10.0", 12.5", 15.0", 20.0", 25.0", 30.0"
- 4.50" diameter and smaller only available up to 15.0"

##### Type of Pipe

- Carbon Steel, Stainless Steel, Ductile Iron, PVC, Asbestos Cement, Copper, Aluminum

##### Working Pressure

- Up to 150 psi





*Smith-Blair*  
a xylem brand

# SPECIFICATION

## WIDE RANGE FULL CIRCLE® REPAIR CLAMP

### ALL STAINLESS

### MODEL 281

---

#### MATERIALS

- **Band**
  - Type 304 Stainless Steel per ASTM A240
  - Band Thickness: 24 gauge thick for clamps 4.50" diameter and smaller  
20 gauge thick for clamps 4.80" diameter and larger
- **Finger**
  - Type 304 Stainless Steel per ASTM A240
  - Finger Thickness: 7 gauge
  - Solution annealed for increased corrosion resistance and strength
  - Long fingers allow for up to 0.95 inches of range
- **Lug Bar**
  - Type 304 Stainless Steel per ASTM A240
  - Lug Bar Thickness: 10 gauge
  - Solution annealed for increased corrosion resistance and strength
  - Spans entire width of clamp for uniform distribution of clamping force
- **Keeper Bar**
  - Type 304 Stainless Steel per ASTM A240
  - Keeper Bar Thickness: 14 gauge
  - Solution annealed for increased corrosion resistance and strength
  - Helps pull clamp around the pipe and closes the clamp during installation
- **Gasket**
  - Nitrile (Buna-N) per ASTM D2000
  - Gasket Thickness: 0.25" thickness
  - Certified to NSF/ANSI 61-G & 372
  - Compounded to resist water, oil, natural gas, acids, alkalies, most (aliphatic) hydrocarbon fluids, and many other chemicals
  - Temperature range: -20°F to +180°F
  - Full 360° gridded face gasket provides maximum pipe support, reinforcement, and sealing pressure
  - Tapered ends allow for full circumferential sealing
- **Bridge Plate**
  - Type 304 Stainless Steel quarter hard per ASTM A240
  - Molded and recessed into gasket
  - Preformed for uniform distribution of gasket pressure over the entire pipe circumference
- **Stud**
  - Type 304 Stainless Steel per ASTM A276
  - Epoxy coated threads to prevent galling
  - 5/8"-11UNC x 8.50" long, Stud
  - Rolled threads for improved physical characteristics, greater thread accuracy, and smooth surface finish
- **Nut**
  - Type 316 Stainless Steel GR. 8 per ASTM A194
  - Fluoropolymer coated to prevent galling
  - 5/8"-11UNC, Heavy Hex Semi-Finished
- **Washer**
  - Type 304 Stainless Steel per ASTM A240
  - 5/8" Type A Plain



*Smith-Blair*  
a xylem brand

# SPECIFICATION

## WIDE RANGE FULL CIRCLE® REPAIR CLAMP

### ALL STAINLESS

### MODEL 281

- **Welding**
  - Welds accomplished using qualified welders
  - GMAW & GTAW weld process utilized
  - Welds passivated to preserve corrosion resistance

#### LISTINGS

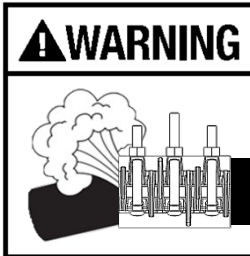
- UL certified to NSF/ANSI 61 & 372
- Meets applicable AWWA C230 standards

#### OPTIONS

- Type 316 Stainless Steel band
- Alternative gasket material (e.g. Viton, EPDM, etc.)
- Conductivity feature

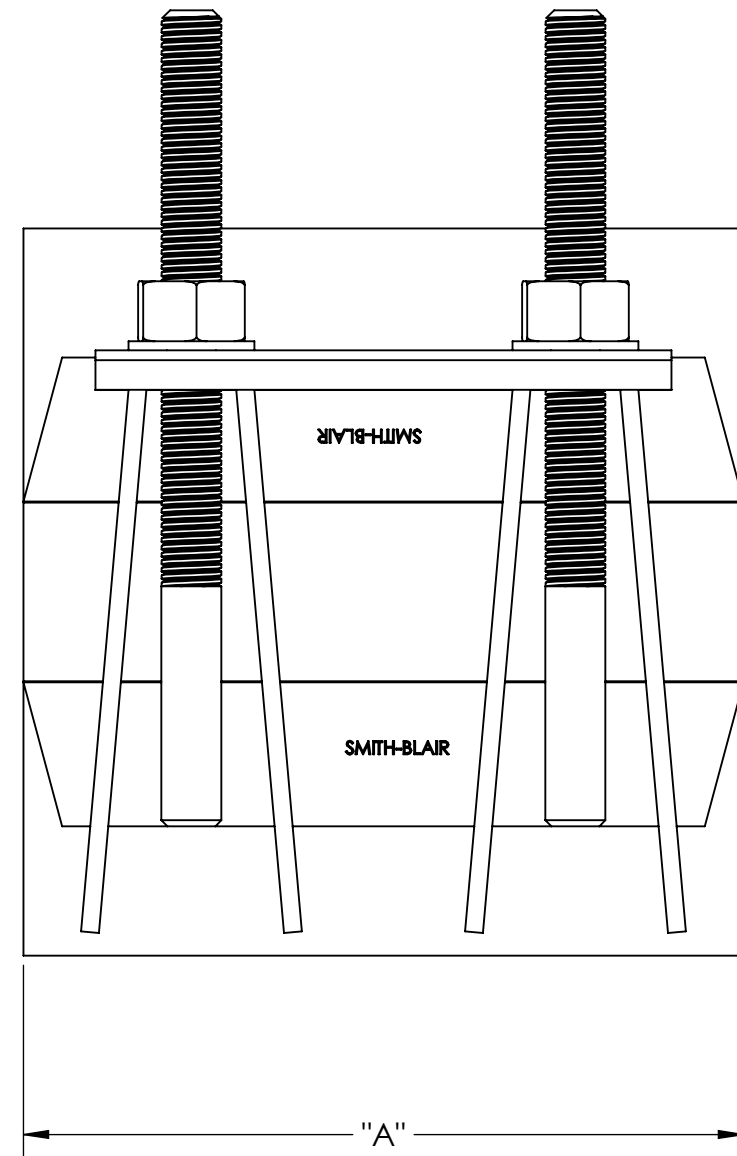
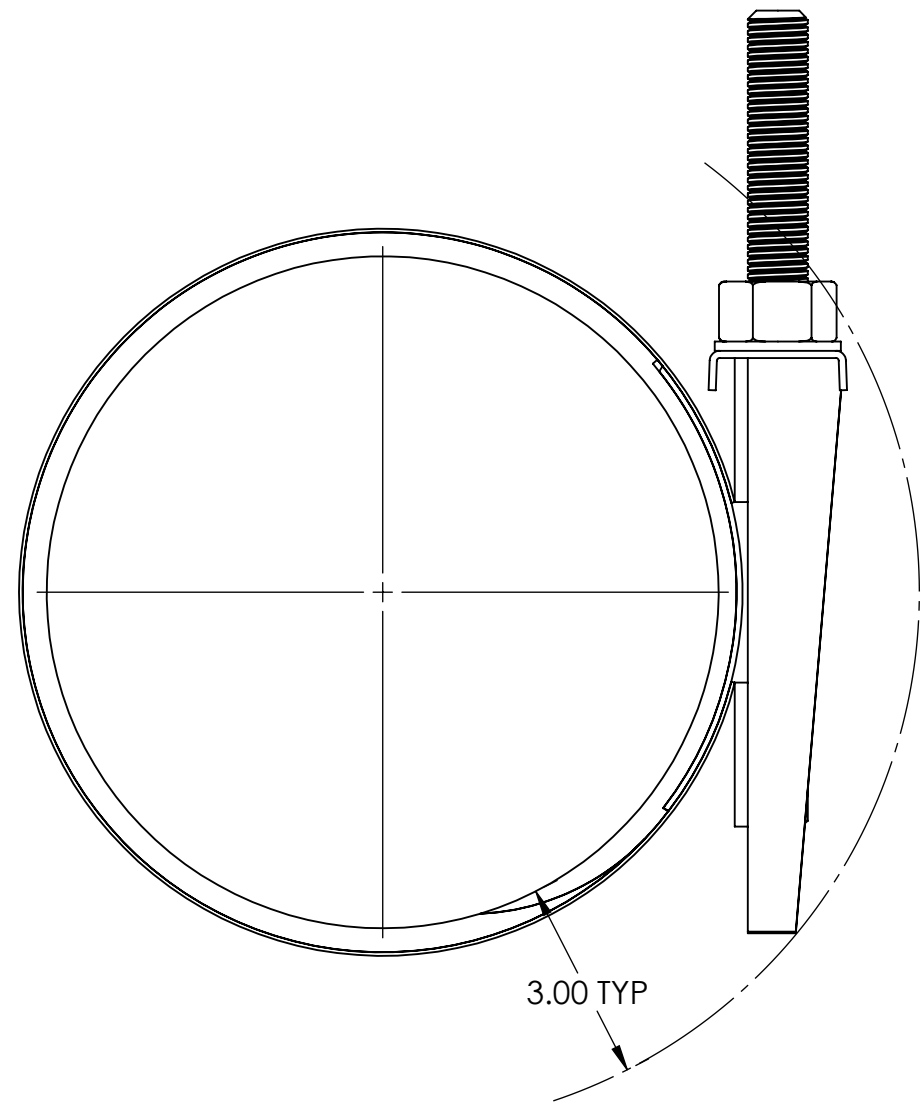
#### NOTES

- Full Circle® is a registered trademark of Smith-Blair Inc.
- These product specifications were correct at the time of publication and are subject to change without notice
- See the Smith-Blair web site for part numbers and ordering information
- See the Smith-Blair web site for warranty information
- See the Smith-Blair web site for corrosion notice



**WARNING** THIS PRODUCT DOES NOT RESTRAIN PIPE MOVEMENT. Proper anchoring is required to prevent pipe pullout. Failure to anchor or improper anchoring can result in dangerous pipe content escape, property damage, serious injury, or death. Read the product installation instructions prior to installing this product.

30 Globe Ave, Texarkana, AR 71854  
Ph: 870-773-5127 • Fax: 870-773-5212  
Toll-Free Numbers: Ph: 800-643-9705 • Fax: 800-648-6792



**Notes:**

1. SEE SMITH-BLAIR CATALOG FOR AVAILABLE PIPE DIAMETER AND WIDTH COMBINATIONS AS SOME COMBINATIONS ARE NOT AVAILABLE
2. 7.50" WIDE CLAMP SHOWN OTHER SIZES SIMILAR

A	KEEPER BAR		HARDWARE		SOCKET SIZE
	QUANTITY	SIZE	QUANTITY	STUD SIZE WASHER SIZE	
7.50	1	6.00	2	5/8" X 8.50" 5/8"	1-1/16"
10.00	1	8.00	3		
12.50	1	10.00	3		
15.00	2	6.00	4		
20.00	2	1X-6.00 1X-10.00	5		
25.00	2	1X-8.00 1X-14.00	8		
30.00	2	14.00	10		

**CERTIFIED TO NSF/ANSI 61-G & 372**

TOLERANCES U.N.O. .XX= ±.03 .XXX= ±.015 FRACTIONS= ANGLES=±1° MACH. FIN= ALL DIMENSIONS ARE IN INCHES.	NOTES: REMOVE BURRS AND SHARP EDGES DO NOT SCALE DWG.	APP'D	DATE
	SCALE: N/A	CK'D	DATE
		DRN	JCC
<b>TITLE SPECIFICATION</b> <b>WIDE RANGE FULL CIRCLE® REPAIR CLAMP</b> <b>MODEL 281</b>			
<b>SMITH-BLAIR</b> TEXARKANA, ARKANSAS		P/N NA	
DWG. NO. <b>SPEC_281.DRW</b>		1 OF 1 SHEET REV.	