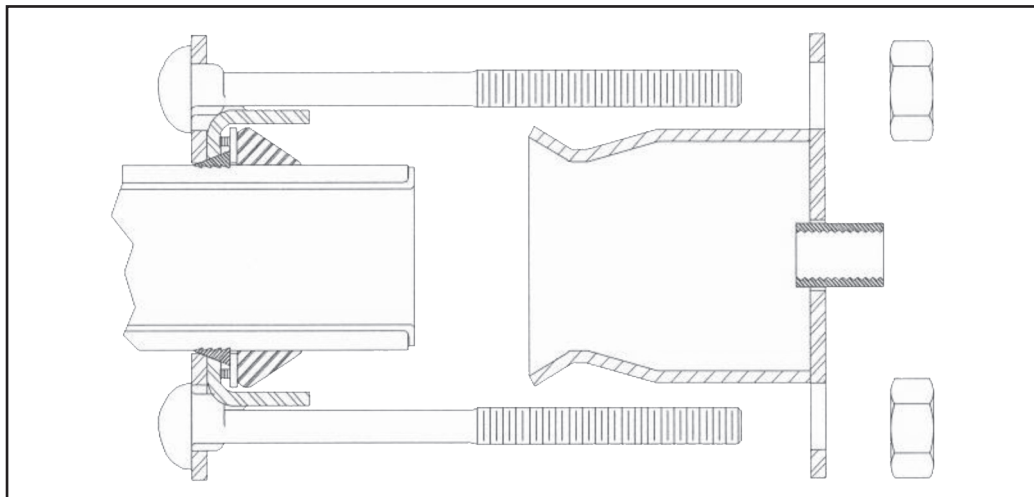


## Installation Instructions

### Maxi-Grip EZB Line Cap Coupling



### Installation of Line Cap Coupling Onto Pipe

#### Step 1

Clean pipe end approximately 10" back removing dirt, rust, scale and oil. Pipe end should be cut square and also be free of longitudinal grooves.

#### Step 2

When capping plastic pipe, a properly sized metallic stiffener must be inserted into the plastic pipe end. The stiffener must be at least 7" long and be marked with the same SDR as the pipe.

#### Step 3

Mark pipe 3 1/2" from end.

#### Step 4

Soap pipe and gasket on open end of coupling.

#### Step 5

Stab coupling onto pipe until follower aligns with mark.

#### Step 6

Torque nuts evenly to 80 ft-lbs. minimum, 100 ft-lbs. maximum while supporting coupling.

#### PRESSURE RATINGS:

- Steel - 300 PSIG
- PE Plastic - 200 PSIG
- Cast Iron - 75 PSIG

**This restraint line cap coupling meets or exceeds the requirements of D.O.T. 192.283 (B).**



## Installation Instructions

### Maxi-Grip EZB Line Cap Coupling

Space intentionally left blank.

#### WARRANTY

Smith-Blair® warrants its products only against defects in materials and workmanship. Smith-Blair®'s liability and customer's exclusive remedy under this warranty or any warranty extends for a period of one (1) year from the date of Smith-Blair®'s ship date and is expressly limited to repayment of the purchase price, repair, or replacement, at Smith-Blair®'s option, during said period, upon proof satisfactory to Smith-Blair® and upon customer's returning and prepaying all charges on such products to factory or warehouse designated by Smith-Blair®.

This warranty is made expressly in lieu of all other warranties, expressed, implied or statutory, with respect to quality, merchantability or fitness for a particular purpose.

10/11

#### WARNING

Metal products are subject to corrosion, particularly when used outdoors and/or underground. A large number of factors and local conditions affect the rate of corrosion. Consult a local corrosion expert to determine the life expectancy of this product when used with your pipeline content, soil, and environment. Also, consult your system designer to determine the suitability of this product in your piping system. Failure to determine the suitability of this product in your application, soil, and/or environment can result in premature product failure. Smith-Blair®, Inc. will provide additional information about this product's material specifications at your request. You may also obtain product information at [www.smith-blair.com](http://www.smith-blair.com).

10/11